

What do Proton Motive Force Driven Multidrug Resistance Transporters Have in Common?

Piotr Mazurkiewicz[†], Arnold J.M. Driessen and Wil N. Konings*

Department of Microbiology, University of Groningen, Kerklaan 30, NL-9751 NN Haren, The Netherlands

[†]Current address: Department of Infectious Diseases, Centre for Molecular Microbiology and Infection, Imperial College London, Flowers Building, Armstrong Road, London SW7 2AZ, UK

Abstract

The extensive progress of genome sequencing projects in recent years has demonstrated that multidrug resistance (MDR) transporters are widely spread among all domains of life. This indicates that they play crucial roles in the survival of organisms. Moreover, antibiotic and chemotherapeutic treatments have revealed that microorganisms and cancer cells may use MDR transporters to fight the cytotoxic action of drugs. Currently, several MDR extrusion systems are being investigated in detail. It is expected that understanding of the molecular basis of multidrug recognition and the transport mechanisms will allow a more rational design of new drugs which either will not be recognized and expelled by or will efficiently inhibit the activity of the MDR transporters. MDR transporters either utilize ATP hydrolysis or an ion motive force as an energy source to drive drugs out of the cell. This review summarizes the recent progress in the field of bacterial proton motive force driven MDR transporters.

Introduction

Bacteria are frequently challenged in their environment by numerous toxic compounds, which range from natural compounds (e.g. plant alkaloids), peptides (e.g. bacteriocins), noxious metabolic products (e.g. bile salts and fatty acids in the case of enteric bacteria), and secondary metabolites (e.g. antibiotics), to industrially produced chemicals such as organic solvents. In order to resist the toxic effects of these antimicrobial agents microorganisms have developed several resistance mechanisms. Often different resistance mechanisms work together to protect effectively bacteria against cytotoxic agents. One of the resistance mechanisms involves the active extrusion of antimicrobials from the

cell by drug excretion systems (Nikaido, 1994; Levy, 1992). Some of these systems mediate the extrusion of a given drug or class of drugs and are called Specific Drug Resistance (SDR) transporters. In contrast, the so-called Multi-Drug Resistance (MDR¹) transporters can handle a wide variety of structurally unrelated compounds. These MDRs can be divided into two major classes on the basis of bioenergetic criteria: (i) ATP-Binding Cassette (ABC) primary transporters, which use the hydrolysis of ATP to fuel transport, and (ii) secondary transporters that are driven by a proton or sodium motive force (pmf or smf).

For many years MDRs belonging to the class of secondary transporters were found in bacteria. However, thanks to a rapid increase of knowledge of bacterial genomes it is now clear that also the ABC-type MDR transporters are common in *prokaryotes*. Examples are the well characterized LmrA of *Lactococcus lactis* (van Veen *et al.*, 1996) and the less studied BmrA (YvcC) of *Bacillus subtilis* (Steinfels *et al.*, 2002), VcaM of *Vibrio cholerae* (Huda *et al.*, 2003b) and HorA of *Lactobacillus brevis* (Sakamoto *et al.*, 2001). The genomes of numerous organisms suggest the presence of many other ATP-dependent drug efflux systems (Saier and Paulsen, 2001). Nevertheless, the secondary transporters still remain the largest group of putative and characterized MDR transporters. This group of proteins is also very diverse with respect to molecular size, secondary structure, oligomeric state and requirements of accessory proteins. Pmf and smf driven MDR transporters are found in four families: the Major Facilitator Superfamily (MFS) (Marger and Saier, 1993), the Small Multidrug Resistance (SMR) family (Paulsen *et al.*, 1996c), the Resistance-Nodulation-cell Division (RND) family (Saier *et al.*, 1994), and the Multi Antimicrobial Extrusion (MATE) family (Brown *et al.*, 1999) (Fig. 1).

Here we present a comprehensive review summarizing the current knowledge on these secondary MDR transporters. Special emphasis is paid to the similarities between MDR pumps from different families, the nature of the substrate binding sites, and the mechanisms of substrate binding and transport.

Secondary multidrug transporters

Major Facilitator Superfamily

The MFS is a large and diverse family containing archaeal, bacterial and eukaryal transport proteins which are involved in transport of various substrates such as sugars, Krebs cycle intermediates, neurotransmitters, amino acids and drugs (Marger and Saier, 1993; Saier and Paulsen, 2001). Most of the MFS members are between 400 and 600 amino acids in length and can be divided on the basis of hydropathy profiles and sequence similarities into groups with 12 and 14 transmembrane segments (TMSs) (Paulsen *et al.*, 1996b). The MFS-

¹Abbreviation use are: MRD, multidrug resistance; ABC, ATP-Binding Cassette; pmf, proton motive force; SMR, Small Multidrug Resistance; MFS, Major Facilitator Superfamily; RND, Resistance-Nodulation-cell Division; MATE, Multi Antimicrobial Extrusion; TPP⁺, tetraphenylphosphonium; TMS, transmembrane segment; TMA-DPH, 1-[4-(trimethylamino)phenyl]-6-phenylhexa-1,3,5-triene.

*For correspondence. Email w.n.konings@biol.rug.nl.

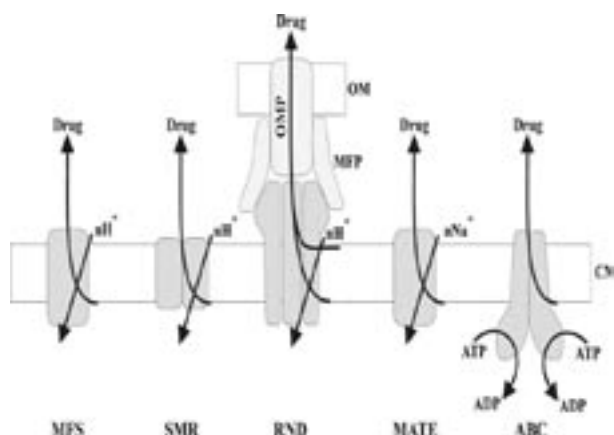


Figure 1. Schematic representation of families of MDR transporters. Proton motive force driven transporters: Major Facilitator Superfamily (MFS) transporters are monomeric and contain 12 or 14 TMSs; Small Multidrug Resistance (SMR) family transporters consist of only 4 TMSs and most likely function as homo- or heterodimers; Resistance-Nodulation-cell Division (RND) family transporters have 12 TMSs topology, they function as trimers and require accessory proteins - outer membrane proteins (OMP) and membrane fusion proteins (MFP). Sodium motive force driven transporters belong to Multi Antimicrobial Extrusion (MATE) family. ATP-Binding Cassette (ABC) pumps utilize energy from ATP hydrolysis to extrude drugs. CM, cytoplasmic membrane; OM, outer membrane.

MDR transporters characterized so far use the pmf to extrude substrates. They are found both in Gram-positive and Gram-negative bacteria and archaea (Table 1) and are believed to function as monomers. The MFS-MDR transporters exhibit broad substrate specificities and transport neutral, zwitterionic and cationic compounds.

Amino acid sequence comparison of the various MFS transporters showed higher similarities in the N-terminal halves of these proteins than in the C-terminal halves (Rouch *et al.*, 1990; Griffith *et al.*, 1992; Paulsen and Skurray, 1993). This observation suggested that the N-terminal domain may be involved in proton translocation while the C-terminal domain determines mainly the substrate specificity (Griffith *et al.*, 1992; Rouch *et al.*, 1990). However, this assumption is not consistent with certain experimental data. In the lactose permease (LacY) of *Escherichia coli*, the N-terminal domain is involved in high affinity sugar binding whereas the C-terminal part contains the residues constituting the proton translocation path (Sahin-Toth *et al.*, 2000; Venkatesan and Kaback, 1998). Also in the MFS-MDR transporters LmrP of *L. lactis* (Mazurkiewicz *et al.*, 2002; Mazurkiewicz *et al.*, 2004b) MdfA of *E. coli* (Edgar and Bibi, 1999; Adler and Bibi, 2003) and QacA of *S. aureus* (Paulsen *et al.*, 1996a) residues important for the substrate specificity can be found both in the N- and C-terminal halves of proteins.

A few conserved amino acid sequence motifs in MFS have been identified (Ma *et al.*, 1995; Paulsen and Skurray, 1993; Paulsen *et al.*, 1996b), from which the GxLaDrxGrkxx(x) motif in the loop connecting the TMSs 2 and 3 appears to be the best conserved among MDR transporters from the MFS. Its conservation indicates an important structural and/or functional role in the transporters and its requirement for the reversible

conformational change during transport of substrates has been proposed (Yamaguchi *et al.*, 1990; Yamaguchi *et al.*, 1992; Paulsen and Skurray, 1993; Mazurkiewicz *et al.*, 2004a; Veenhoff *et al.*, 2000).

Small Multidrug Resistance family

The SMR family is part of the drug/metabolite transporter (DMT) superfamily (Jack *et al.*, 2001). The SMR transporters are about 110 amino acids in length and therefore the smallest secondary drug efflux proteins described. A great majority of the identified SMR family members is of bacterial origin, although recently the first archaeal SMR transporter has been characterized (Ninio and Schuldiner, 2003). The SMR proteins have been shown to possess four tightly packed transmembrane helices by amino acid sequence analysis, biochemical data and crystallographic studies (Paulsen *et al.*, 1996c; Mordoch *et al.*, 1999; Tate *et al.*, 2001; Ubarretxena-Belandia *et al.*, 2003). A glutamate residue in the conserved motif WixlviAlIEV in the first TMS of the SMR family was found to be essential for substrate binding and transport (Muth and Schuldiner, 2000). Also residues in the vicinity of this conserved glutamate have been shown to influence the activity of the transporters (Gutman *et al.*, 2003). The small size of the SMR pumps suggested that the functional form of these transporters is an oligomer (Paulsen and Skurray, 1993; Paulsen *et al.*, 1995). This idea was confirmed by negative dominance studies (Yerushalmi *et al.*, 1996), cross-linking experiments (Soskine *et al.*, 2002), *in vitro* monomer swapping (Rotem *et al.*, 2001) and structural analysis of crystallized EmrE of *E. coli* (Tate *et al.*, 2001; Ubarretxena-Belandia *et al.*, 2003), the best characterized transporter of the family. These latter studies showed that EmrE most likely functions as a homodimer. Interestingly, the SMRs YkkC and YkkD of *B. subtilis* fail to mediate resistance against toxic compounds when expressed separately, but their co-expression gives rise to a MDR phenotype including resistance to cationic, anionic and neutral drugs (Jack *et al.*, 2000). This observation suggests that heterodimerization of different SMR transporters may result in functional transporters with new substrate specificities (Jack *et al.*, 2000).

Resistance-Nodulation-cell Division family

MDR transporters belonging to the RND family consist of about 1000 amino acids (Saier and Paulsen, 2001). They were predicted to have twelve α -helical TMSs and two large periplasmic loops between the TMSs 1 and 2 and TMSs 7 and 8 (Saier and Paulsen, 2001; Paulsen *et al.*, 1996b). This topology was first supported by membrane topology analysis of the MexB from *Pseudomonas aeruginosa* (Guan *et al.*, 1999) and AcrB of *E. coli* (Fujihira *et al.*, 2002), and confirmed recently by a high resolution structure of AcrB (Murakami *et al.*, 2002). This structure revealed that the functional unit of AcrB, and probably also of other RND-MDR transporters, is a trimer (Murakami *et al.*, 2002; Yu *et al.*, 2003a). The first halves of the RND family proteins are homologous to the second halves indicating that the proteins arose as a result of an intragenic tandem duplication event prior to the divergence of the family

Table 1. MDR transporters, their origins and examples of substrates. A compound is listed as a substrate either on the basis of transport or resistance tests. ^(e) The number of transmembrane α -helices of the MFS is given in parenthesis. AC, acriflavin; BC, benzalconium chloride; CCCP, carbonyl cyanide *m*-chlorophenylhydrazone; CH, chlorhexidine; CP, chloramphenicol; CV, crystal violet; EtBr, ethidium bromide; DO, daunomycin; DOX, doxorubicin; FQ, fluoroquinolones; GM, gentamycin; H33342, Hoechst 33342; MV, methyl viologen; NA, nalidixic acid; NBD-PC, 7-nitrobenz-2-oxa-1,3-diazol-phosphatidylcholine; Nor, norfloxacin; Nov, novobiocin; PM, puromycin; PY, pyronine Y; TC, tetracycline; TMA-DPH, 1-[4-(trimethylamino)phenyl]-6-phenylhexa-1,3,5-triene; TPA, tetraphenylarsonium, TPP⁺, tetraphenylphosphonium; TSA, tetrachlorosalicylanilide.

Protein	Organism	Examples of Substrates	Reference
MFS ^a			
Blt (12)	<i>Bacillus subtilis</i>	AC, EtBr, FQ, R6G, TPP ⁺	(Ahmed <i>et al.</i> , 1995)
Bmr (12)	<i>B. subtilis</i>	AC, EtBr, FQ, R6G, TPP ⁺	(Neyfakh <i>et al.</i> , 1991)
Cmr (12)	<i>Corynebacterium glutamicum</i>	Er, PU, TC	(Jager <i>et al.</i> , 1997)
EmrB (14)	<i>Escherichia coli</i>	CCCP, NA, TSA	(Lomovskaya and Lewis, 1992)
LfrA (14)	<i>Mycobacterium smegmatis</i>	AC, EtBr, FQ	(Takiff <i>et al.</i> , 1996)
LmrP (12)	<i>Lactococcus lactis</i>	DM, EtBr, H33342, R6G, TMA-DPH, TPP ⁺	(Bolhuis <i>et al.</i> , 1995)
MdfA (Cmr/CmlA) (12)	<i>E. coli</i>	CP, Er, EtBr, H33342, PM, TC, TPP ⁺	(Nilsen <i>et al.</i> , 1996)
NorA (12)	<i>Staphylococcus aureus</i>	AC, CP, FQ, PM, R6G, TPP ⁺	(Yoshida <i>et al.</i> , 1990)
PmrA (12)	<i>Streptococcus pneumoniae</i>		(Gill <i>et al.</i> , 1999)
QacA (14)	<i>S. aureus</i>	BC, CH, EtBr, PY, TMA-DPH	(Rouch <i>et al.</i> , 1990)
QacB (14)	<i>S. aureus</i>		(Paulsen <i>et al.</i> , 1996a)
Tap (12)	<i>Mycobacterium fortuitum</i>	GM, streptomycin, TC	(Ainsa <i>et al.</i> , 1998)
VceB (14)	<i>Vibrio cholerae</i>	CCCP, CP, Er, NA,	(Colmer <i>et al.</i> , 1998)
SMR			
EbrAB	<i>B. subtilis</i>	AC, EtBr, PY	(Masaoka <i>et al.</i> , 2000)
EmrE	<i>E. coli</i>	AC, BC, EtBr, MV, TPP ⁺	(Purewal, 1991)
Hsmr	<i>Halobacterium salinarum</i>	AC, EtBr, TPP ⁺	(Ninio and Schuldiner, 2003)
Mmr	<i>Mycobacterium tuberculosis</i>	AC, Er, EtBr, PY, TPP ⁺ ,	(De Rossi <i>et al.</i> , 1998)
QacE	<i>Klebsiella aerogenes</i>	EtBr	(Paulsen <i>et al.</i> , 1993)
QacE Δ 1	<i>Pseudomonas aeruginosa</i>	CV, EtBr	(Kazama <i>et al.</i> , 1999)
Smr (QacC)	<i>S. aureus</i>	CV, EtBr, MV, TPP ⁺	(Sasatsu <i>et al.</i> , 1989)
YkkCD	<i>B. subtilis</i>	CP, CV, EtBr, MV, PY, TC, TPA	(Jack <i>et al.</i> , 2000)
RND			
AcrB	<i>E. coli</i>	AC, bile salts, β -lactams, CP, CV, detergents, Er, FQ, NA, Nov, NBD-PC, TC	(Ma <i>et al.</i> , 1993)
AcrB	<i>Haemophilus influenzae</i>	CV, Er, EtBr,	(Sanchez <i>et al.</i> , 1997)
AcrB	<i>Salmonella typhimurium</i>	AC, Er, NA	(Lacroix <i>et al.</i> , 1996)
MexB	<i>P. aeruginosa</i>	β -lactams, CP, Nov, TC, TMA-DPH	(Poole <i>et al.</i> , 1993)
MexD	<i>P. aeruginosa</i>	Er, EtBr, TC	(Poole <i>et al.</i> , 1996)
MexY	<i>P. aeruginosa</i>	Er, GM, TC	(Kohler <i>et al.</i> , 1997)
MdtBC	<i>E. coli</i>	Bile salts, Nov	(Nishino and Yamaguchi, 2001)
MATE			
MorM	<i>V. parahaemolyticus</i>	CP, EtBr, Nor	(Morita <i>et al.</i> , 1998)
VcmA	<i>V. cholerae</i>	EtBr, H33342, Nor	(Huda <i>et al.</i> , 2001)
VcrM	<i>V. cholerae</i>	AC, DAPI, EtBr, H33342, R6G, TPP ⁺	(Huda <i>et al.</i> , 2003a)
HmrM	<i>H. influenzae</i>	AC, DM, DOX, EtBr, H33342, Nor, TPP ⁺	(Xu <i>et al.</i> , 2003)
YdhE	<i>E. coli</i>	EtBr, Nor	(Morita <i>et al.</i> , 1998)

members (Saier and Paulsen, 2001). MDR transporters from the RND family characterized so far are found only in Gram-negative bacteria (Table 1) and catalyze H⁺/drug antiport (Murakami and Yamaguchi, 2003). For extrusion of substrates across the cytoplasmic and the outer membrane of the Gram-negative bacteria the RND family members require accessory proteins. Accessory proteins such as Membrane Fusion Proteins and Outer Membrane Proteins (Paulsen *et al.*, 1997), are sometimes encoded by genes located in an operon together with the gene

coding for the RND transporter (Poole *et al.*, 1996; Kohler *et al.*, 1997; Gotoh *et al.*, 1995; Yoneyama *et al.*, 1998). However, often the Outer Membrane component is also used by other efflux system(s) and its gene might therefore be located elsewhere on the chromosome (Ma *et al.*, 1993; Li *et al.*, 2003; Chuanchuen *et al.*, 2002). The structure of AcrB suggests that the RND proteins interact directly with the Outer Membrane Proteins and that this interaction is stabilized by the Membrane Fusion Proteins (Zgurskaya and Nikaido, 1999; Murakami *et al.*, 2002).

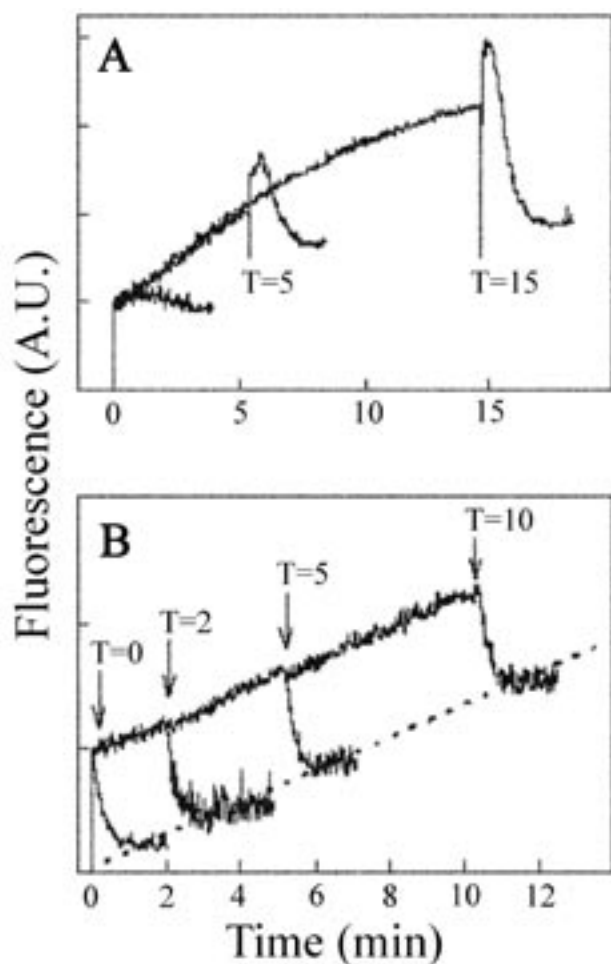


Figure 2. Rate of energy-dependent TMA-DPH extrusion as a function of the partitioning of TMA-DPH in the phospholipid bilayer. Proton motive force-dependent TMA-DPH fluorescence development in *L. lactis* cells expressing LmrP (A) and in inside-out membrane vesicles prepared from *E. coli* cells expressing LmrP (B). The kinetics of TMA-DPH fluorescence development upon the addition to membranes is biphasic. The initial fast phase reflects probe partitioning in the outer leaflet of the membrane, while the second slower phase is due to transbilayer movement of TMA-DPH into the inner leaflet of the membrane and refilling of the outer membrane leaflet. Cells were energized with glucose at various times after the addition of TMA-DPH. In cells, the initial rate of TMA-DPH extrusion increases with the time allowed for probe flipping from the outer to inner leaflet of the membrane, whereas the steady state TMA-DPH fluorescence remains the same (A). The inside-out membrane vesicles were energized with D-lactate at various times after the addition of TMA-DPH. In the vesicles, the initial transport rates were identical and independent of the time allowed for partitioning of TMA-DPH into the inner leaflet of the inverted membrane vesicles (B). The steady state fluorescence in this experiment increased along with the partitioning of TMA-DPH into the internal leaflet of the inverted membranes. Data obtained from (Bolhuis *et al.*, 1996) with permission.

By shuffling components of different efflux systems the RND component was shown to determine the substrate specificity of these three-components systems (Murata *et al.*, 2002). Mutagenesis studies and fusions of domains of different RND transporters showed that especially the periplasmic loop regions determine the substrate specificity and are essential for transport (Mao *et al.*, 2002; Elkins and Nikaido, 2002; Tikhonova *et al.*, 2002; Eda *et al.*, 2003). These tripartite efflux systems have

extremely broad substrate specificities and can expel neutral, negatively and positively charged substrates with a wide range of hydrophobicity. Besides many antibiotics, they can transport organic solvents, isoflavonoids, fatty acids, bile salts, steroids, and antibacterial peptides (Table 1). The increased resistance of *E. coli* expressing the AcrAB-TolC system to hydrophilic β -lactam antibiotics which do not enter the cytoplasm (Mazzariol *et al.*, 2000) and the structure of AcrB with bound substrates (Yu *et al.*, 2003a) implicate that these transporters can extrude drugs from not only the cytoplasm or from the cytoplasmic membrane but also from the periplasm.

Multi Antimicrobial Extrusion family

The bacterial members of the MATE family consist of about 450 amino acids and have most likely also a 12 TMS topology, which is similar to the size and topology of the MFS members (Saier and Paulsen, 2001; Jack *et al.*, 2001). The first member of this family, NorM of *Vibrio parahaemolyticus*, was identified quite recently (Morita *et al.*, 1998). Later, other transporters belonging to the MATE family were reported: VcmA and VcrM of *V. cholerae* (Huda *et al.*, 2001; Huda *et al.*, 2003a), YdhE of *E. coli* (Morita *et al.*, 1998), and HmrM of *Haemophilus influenzae* (Xu *et al.*, 2003). The unique feature of MATE transporters is their requirement for the smf as the driving force of drug transport. This feature is distinctly different from the other groups of secondary MDR transporters. Despite the differences in the driving force for transport the MATE family transporters extrude a similar range of compounds as the pmf driven extrusion systems (Table 1).

Hydrophobic Substrates are Extruded from the Inner Leaflet of the Membrane

MDR transporters *per definition* have to transport compounds with very different chemical structures. The substrates belong to such classes as: aminoacridines (acriflavine), phenanthridines (ethidium), rhodamines (rhodamine G6 and 123), biguanidines (chlorhexidine), and quaternary ammonium (also arsenium or phosphonium) compounds (benzalconium, dequalinium). Also different antibiotics from groups of β -lactams, cephalosporins, aminoglycosides, lincosamides, quinolones, tetracyclines and chloramphenicol have been reported to be substrates of the MDR transporters (Table 1, and e.g. (Ma *et al.*, 1995; Putman *et al.*, 2001; Sulavik *et al.*, 2001; Edgar and Bibi, 1997)). The common feature of all these MDR substrates appears to be their amphipatic character; although some of the substrates i.e. aminoglycosides are very hydrophilic. The substrates contain hydrophobic domains which may have structural resemblance to aliphatic chains such as lipids and some detergents, aliphatic rings such as streptomycin, or aromatic rings oriented relative to each other in one plane such as ethidium. Other substrates possess aromatic rings oriented in different planes such as tetraphenylphosphonium (TPP⁺). The hydrophilic domain is usually related to the amide group, hydroxyl group or quaternary arsenium or phosphonium moiety.

Most drugs that interact with MDRs, readily intercalate the lipid bilayer due to their high hydrophobicity and amphiphilic nature. These properties of the substrates of

MDR transporters suggested that the MDR transporters pick up their substrates from the membrane and not from the cytoplasm and that they function as so called 'hydrophobic vacuum cleaners' (Gros *et al.*, 1986; Higgins and Gottesman, 1992; Gottesman and Pastan, 1993). When the drugs are introduced in the external medium of the cells this intercalation occurs first in the external leaflet of the membrane with a rate that depends on the lipophilicity of the drug. Subsequently the drug flips from the external leaflet to the inner leaflet. This flipping of the drug from the outer to the inner leaflet is the rate limiting step in drug entry. This rate is to a large extent determined by the molecular dimensions, the smaller the drug molecule the faster the flipping process. The flipping rate of a charged compound will most likely be slower than of an uncharged one with similar dimensions. On the other hand, the flipping rate of a positively charged compound will be enhanced by the membrane potential ($\Delta\psi$), inside negative. From the inner leaflet of the lipid bilayer the drug can then diffuse into the cytosol where it can exert its cytotoxic action. Drug extrusion by the MFS-MDR transporter LmrP of *L. lactis* has been found to occur from the inner leaflet of the membrane, rather than from the cytosol. The most convincing evidence for drug efflux from the membrane to the aqueous phase by a secondary transporter is provided by the kinetics of 1-[4-(trimethylamino)phenyl]-6-phenylhexa-1,3,5-triene (TMA-DPH) transport by LmrP (Bolhuis *et al.*, 1996). TMA-DPH partitions readily into the lipid bilayer. It is strongly fluorescent when partitioned into the membrane but essentially non-fluorescent in an aqueous environment, which makes it possible to follow fluorimetrically the partitioning of TMA-DPH into the lipid bilayer. The increase in fluorescence intensity due to the partitioning of TMA-DPH into the phospholipid bilayer was found to be a biphasic process (Bolhuis *et al.*, 1996). A rapid process that reflects the fast entry (1-2 s) of TMA-DPH into the outer leaflet of the phospholipid bilayer is followed by a slower (several minutes) transbilayer movement from the outer to the inner leaflet of the membrane. Energization of intact cells by the addition of glucose revealed that the initial rate of extrusion of TMA-DPH, monitored as a decrease in fluorescence over time, increased with an increasing concentration of TMA-DPH in the inner leaflet of the membrane (Fig. 2A) (Bolhuis *et al.*, 1996). The extent of extrusion never exceeded the amount of TMA-DPH present in the inner leaflet, indicating that the probe cannot be extruded from the outer leaflet of the cytoplasmic membrane. When similar experiments were done with inside-out membrane vesicles in which the inner leaflet is immediately accessible to drug molecules, the situation was significantly different. Upon addition of TMA-DPH to the membrane vesicle suspension, TMA-DPH rapidly intercalated into the exposed leaflet of the membrane, resulting in a maximum concentration of TMA-DPH in this leaflet. Upon energization maximum rates of TMA-DPH extrusion were observed at any moment after addition of TMA-DPH and, in contrast to intact cells, the extent of extrusion now exceeded the amount of TMA-DPH present in the internal leaflet of inside-out vesicles (Fig. 2B). These observations strongly indicate that TMA-DPH is recognized as substrate only after partitioning into

the normal inner leaflet of the cellular membrane, and is directly transported to the aqueous environment as observed by the decrease in fluorescence.

TMA-DPH appeared also to be useful for studies of the transport mechanism of QacA of *S. aureus* (Mitchell *et al.*, 1999), a protein representing MFS transporters with 14 TMSs. Its gene was found on multidrug resistance plasmids from clinical isolates of *S. aureus*, and expression of the gene resulted in increased resistance to a wide range of organic cations (Table 1) (Tennent *et al.*, 1989; Littlejohn *et al.*, 1992; Mitchell *et al.*, 1998). Mitchell *et al.* (Mitchell *et al.*, 1999) have shown that cells expressing QacA have strongly reduced accumulation of TMA-DPH in the inner leaflet of the membrane, suggesting that QacA interacts with, and expels this compound from the cell membrane, thus preventing drug entry to the cytoplasm.

Systematic cysteine scanning mutagenesis of EmrE, the SMR-MDR transporter of *E. coli*, combined with *N*-ethylmaleimide accessibility studies supplied insight into the nature of the substrate translocation pathway (Mordoch *et al.*, 1999). The results demonstrated that all the residues in the putative membrane domains of EmrE are inaccessible to *N*-ethylmaleimide, a relatively small and hydrophobic maleimide which can freely cross the lipid membrane. Also a slow exchange of the amide protons with solvent deuterium supported the idea that EmrE is a tightly packed protein with the TMS's inaccessible to the water phase (Arkin *et al.*, 1996). Despite these observations, a chamber accessible from the aqueous phase is clearly visible in the 7 Å resolution structure of the dimeric unit of EmrE (Ubarretxena-Belandia *et al.*, 2003). This cavity extends from one surface of the membrane to just below the membrane centre and its middle part is occupied by the bound substrate TPP⁺ (Ubarretxena-Belandia *et al.*, 2003). Such localization of the substrate indicates that binding takes place in one of the membrane leaflets. Due to the low resolution of the electron densities it was not possible to determine at which side of the membrane the chamber is open, or which residues are interacting with the substrate (Ubarretxena-Belandia *et al.*, 2003). More biochemical studies are required to confirm the water phase accessibility of the residues aligning the chamber.

Also in LmrP (Mazurkiewicz *et al.*, 2002) and MdfA (Adler and Bibi, 2003) the membrane embedded cysteine residues turned out to be much less reactive to the maleimide compounds than the cysteine residues introduced into loop regions. From the presented evidence a picture emerges of MDR transporters being proteins with a hydrophobic and poorly water accessible membrane domain which is involved in binding of hydrophobic substrates from the inner leaflet of the cytoplasmic membrane. However, the 'hydrophobic vacuum cleaner' model of drug transport may not apply to all substrates and all MDR transporters. Notably, it has been shown that expression of the AcrAB-TolC extrusion system supports *E. coli* with resistance to not only hydrophobic drugs which exert their antibacterial action on the cytoplasmic targets, but also to β -lactam antibiotics which interfere with the cell wall synthesis (Ma *et al.*, 1995; Sulavik *et al.*, 2001). An analogous

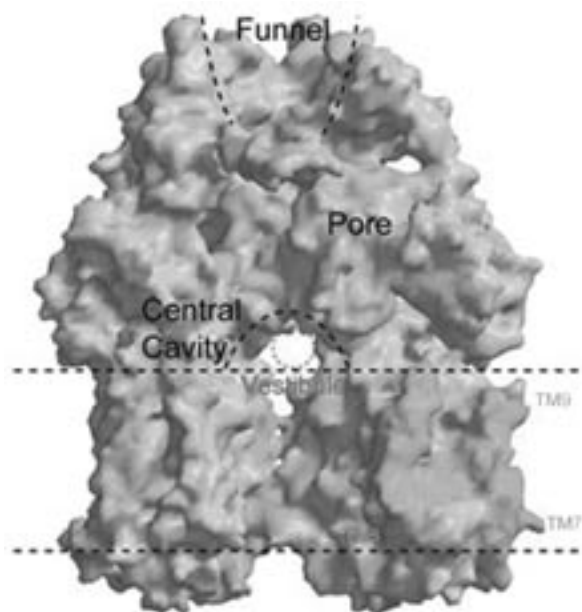


Figure 3. A cut-away stereo view of AcrB trimer. The front protomer is removed. The yellow areas of the surface indicate residues from Asp⁹⁹ to Leu¹¹⁸ in pore helices. The pale green areas are colored according to residues in TMS 7 (Gly⁵³⁹ Val⁵⁵⁷) and TMS 8 TMS 9 (Ser⁹⁶⁹ Phe⁹¹⁸). Locations of the funnel and the cavity are indicated by dotted lines. Picture from (Murakami et al., 2002) with permission.

phenomenon has been noted for the role of MexAB-OprM in the drug resistance of *P. aeruginosa* (Li et al., 1995). Investigations of the susceptibility profiles of *acrAB* knockout strains and the AcrAB expressing WT strains of *Salmonella typhimurium* (Nikaido et al., 1998) and *E. coli* (Mazzariol et al., 2000) revealed that in both organisms this extrusion system transports more efficiently β -lactams with more lipophilic side chains. These observations are consistent with the hypothesis that only those molecules that partition at least partially into the outer leaflet of cytoplasmic membrane are captured by the AcrAB pump (Nikaido et al., 1998). The structural data obtained for the *E. coli* AcrB protein supported the possibility that some substrates can be recruited from the interface of the inner membrane and the periplasm (Murakami et al., 2002; Yu et al., 2003a). AcrB appeared to form a trimeric structure with a clearly defined periplasmic headpiece and an α -helical transmembrane region (Fig. 3). The headpiece is divided in two stacked parts. The side view of the upper part has a trapezoidal form and is about 70 Å wide at the bottom and about 40 Å wide at the top (Murakami et al., 2002). The diameter of the top of the AcrB headpiece is almost equal to that of the bottom of TolC (Koronakis et al., 2000). Hence Murakami et al. (Murakami et al., 2002) proposed that this part of the AcrB trimer may be directly involved in docking of TolC. Viewed from the top the upper part of the headpiece is open like a funnel, which narrows at the bottom and forms a central pore (Fig. 3). This pore connects the funnel with the central cavity whose side walls are formed by the lower part of the headpiece while the bottom is formed by the membrane domain, and most likely, by headgroups of phospholipids present between

loosely interacting transmembrane parts of monomers (Murakami et al., 2002). Interestingly, this central cavity is also connected with the periplasm by means of three vestibules which exist between all monomers. The vestibules are located on the border between the headpiece and the membrane domain. A substrate present on the membrane plane or in the outer leaflet of the cytoplasmic membrane may therefore gain access to the central cavity via these vestibules (Murakami et al., 2002). Although, the described structure can readily explain the increased resistance of the AcrAB expressing strains to the β -lactam antibiotics, it should be noted that *E. coli* expressing an ABC-type MDR transporter LmrA of *L. lactis* also gained resistance to this class of antibiotics (Putman et al., 2000). This observation suggests that the transporter-based mechanism of resistance to β -lactams is more complicated than expected.

Multidrug transporters have multiple drug-interaction sites

MFS transporters contain membrane embedded drug-interaction sites

The interaction of one transporter with many, structurally diverse substrates suggested the presence of multiple drug interaction sites in MDR transporters. Studies on the drug-stimulated ATP-ase activity, drug binding and drug transport by the human P-glycoprotein (Spoelstra et al., 1994; Dey et al., 1997; Litman et al., 1997), and analysis of the substrate specificity of random mutants of the murine MDR1B P-glycoprotein (Gruol et al., 2002) delivered data that were consistent with this hypothesis for ABC transporters.

The first direct indication that secondary MDR proteins may have multiple substrate interaction sites came from studies on the kinetics of inhibition of LmrP-mediated Hoechst 33342 transport in inside-out membrane vesicles of *L. lactis* (Putman et al., 1999). LmrP-related Hoechst 33342 transport is competitively inhibited by quinine and verapamil, non-competitively by nicardipin and vinblastin, and un-competitively by TPP⁺ (Putman et al., 1999). Putman et al. (Putman et al., 1999) proposed that the three negatively charged residues (Asp¹⁴², Glu³²⁷ and Glu³⁸⁸) in the putative TMSs of LmrP may play a role in the binding of cationic drugs by LmrP. Site directed mutagenesis of these residues and analysis of drug binding properties of the obtained mutants showed that only Glu³²⁷ is essential for Hoechst 33342 binding, while none of these three residues appeared to be important for interactions with ethidium (Mazurkiewicz et al., 2004b). Clearly these two substrates must have spatially separated binding sites.

Sequence comparison of QacA and QacB, two 14 TMSs members of the MFS of MDR transporters from *S. aureus* unveiled that these proteins differ by only 6 amino acids (Paulsen et al., 1996a). Nonetheless, whereas QacA mediates resistance to both mono- and divalent organic cations, QacB confers lower or no resistance to divalent organic cations (Littlejohn et al., 1992; Lyon and Skurray, 1987). Site directed mutagenesis of *qacA* showed unambiguously that the phenotypic differences between QacA and QacB are due to a single amino acid

substitution within the putative TMS 10. QacA possesses at position 323 an aspartate while QacB contains at the corresponding position an alanine residue. G322E and A323D QacB mutants were also able to mediate resistance to divalent cations (Paulsen *et al.*, 1996a). These findings suggested that the region of QacA/B proteins containing residues 322 and 323, plays a role in substrate recognition, and that a negatively charged residue in this region may interact directly with one of the positively charged moieties of the divalent cations. Other possibilities are that the acidic residue is involved in energizing transport of divalent cations or that the mutation indirectly affects a binding site located elsewhere in the transporter via conformational alterations (Paulsen *et al.*, 1996a). Investigation of the kinetics of inhibition of QacA- and QacB-mediated transport of ethidium, a monovalent cation, by other mono- and divalent substrates provided evidence that QacA possesses distinct binding sites for mono- and divalent substrates (Mitchell *et al.*, 1999). Thus, despite the high level of similarity between QacA and QacB, the QacB protein appears to lack a binding site for divalent organic cations (Mitchell *et al.*, 1999).

In Bmr, a MFS-MDR transporter of *B. subtilis*, three residues, Phe¹⁴³, Val²⁸⁶ and Phe³⁰⁶, were identified as being important for interactions of the transporter with the inhibitor reserpine by screening for mutants with decreased sensitivity for this alkaloid (Ahmed *et al.*, 1993; Klyachko *et al.*, 1997). Interestingly, substitutions of Val²⁸⁶ altered exclusively the sensitivity of Bmr to reserpine, whereas mutations of the two other residues influenced not only the inhibition by reserpine, but also changed the substrate specificity of the transporter (Ahmed *et al.*, 1993; Klyachko *et al.*, 1997).

Mutations of Glu²⁶ in the first TMS, the only one membrane-embedded charged residue in *E. coli* multidrug transporter MdfA (Edgar and Bibi, 1997; Adler and Bibi, 2002), have a drastic effect on the substrate recognition profile (Edgar and Bibi, 1999). Mutants lacking Glu²⁶ were unable to transport cationic substrates but retained activity with a neutral substrate chloramphenicol (Edgar and Bibi, 1999). These observations suggested that Glu²⁶ may be directly involved in interaction with cationic substrates. However, it was not clear if this residue is in the proximity of the chloramphenicol binding site or if the cationic and neutral substrates have distinct binding sites. The idea of spatially separated binding sites was supported by the results of substrate binding assays performed with purified MdfA (Lewinson and Bibi, 2001). The specific binding of TPP⁺ to MdfA was inhibited by other cationic substrates of this transporter. Interestingly, the binding of TPP⁺ was not affected by the addition of zwitterionic substrates but the neutral substrate chloramphenicol stimulated TPP⁺ binding by enhancing its affinity to MdfA (Lewinson and Bibi, 2001). On the contrary, transport of TPP⁺ was inhibited by chloramphenicol. These observations demonstrate that MdfA binds chloramphenicol and TPP⁺ simultaneously, thereby providing strong support for the presence of several distinct binding sites (Lewinson and Bibi, 2001). The authors proposed that these two substrates either bind to different domains of a common hydrophobic pocket in MdfA, or bind to separate sites that interact allosterically with each other (Lewinson and Bibi, 2001).

Summarizing, the results obtained for MFS-MDRs implicate that different drugs interact with different domains of the drug binding site or even with multiple binding sites of the MDR transporters.

The case of the RND transporters

Albeit the data from biochemical analysis of the drug-transporter interactions pointed towards existence of multiple drug-binding sites it was not possible to conclude irrevocably whether these multiple ligand interaction sites are in different domains of one well-defined binding pocket or that several distinct binding sites are present. This question awaited the direct evidence from the crystallographic data. The recently determined structure of AcrB of *E. coli* with four different ligands: rhodamine 6G, ethidium, dequalinium and ciprofloxacin (Yu *et al.*, 2003a) supplied such important information for RND-MDR transporter-drug interactions. The structures illustrate that ligands bind to various positions of the central cavity formed at the interface of the membrane and periplasm between the subunits of AcrB trimer. Each drug interacts with a different subset of residues located within an extensive drug binding cavity (Yu *et al.*, 2003a). Binding of rhodamine 6G, ethidium, and ciprofloxacin is due to interactions with mainly hydrophobic residues which include phenylalanines, as well as alanines, leucines, valines provided by different regions of the central cavity, suggesting that the binding is mainly due to hydrophobic and perhaps also aromatic π - π interactions (Yu *et al.*, 2003a). The only polar residue which seems to participate in interactions with these substrates is Lys²⁹ located at the vestibule of each subunit, close to the rhodamine 6G and ciprofloxacin molecules (Yu *et al.*, 2003a). In the structure of AcrB, dequalinium is the only ligand that electrostatically interacts with acidic residues e.g. with Asp⁹⁹ and Asp¹⁰¹ located at the top of the cavity (Yu *et al.*, 2003a). Yu *et al.* (Yu *et al.*, 2003b) suggested that the negatively charged headgroups of lipids of the outer leaflet present between TMSs of AcrB stabilize binding of cationic drugs at the bottom of the central cavity, and therefore allow a stable binding of cationic substrates without requiring interactions with acidic residues. Notably, the carbonyl oxygen of Phe³⁸⁶ is close to one of the amino groups of ethidium and may contribute to the neutralization of charge of the substrate (Yu *et al.*, 2003a). Stronger evidence supporting the observation that neutralization of the positive charge of substrates does not necessarily require the presence of acidic residues comes from a higher resolution structure of QacR. This transcriptional regulator of *qacA* was previously crystallized with bound drugs like rhodamine 6G, ethidium and dequalinium (Schumacher *et al.*, 2001). These structures showed an important role of aromatic and acidic residues in substrate binding. A more recent structure with bound pentamidine revealed that neutralization of the substrate charge can be achieved by drug interactions with the negative dipoles of several oxygen atoms from neighbouring side chains and the peptide backbone (Murray *et al.*, 2004). The surprising features of the described AcrB structures are that (i) the cavity contains several ligand molecules and (ii) there is no direct indication for substrate binding from the inner-leaflet of the membrane. Murakami *et al.*

(Murakami *et al.*, 2002) proposed that binding of ligands from the membrane may occur in the groove between TMS 7 and TMS 8, but this space is unoccupied in ligand-bound AcrB (Yu *et al.*, 2003a). Additionally, since the structures of the ligand-free (Murakami *et al.*, 2002) and ligand-bound (Yu *et al.*, 2003a) AcrB are almost identical it is far from clear which step of the transport cycle corresponds to this ligand-bound transporter and what the stimulus is that triggers the conformational change that is required for transport. Possibly the interaction with the outer membrane component, TolC, is needed for opening the central pore at the top of the central cavity of AcrB. Another possibility is that the pmf affects the transmembrane region of AcrB and opens the periplasmic pore via remote conformational change (Murakami *et al.*, 2003). The presence of (i) three molecules of substrates in the central cavity and (ii) three vestibules connecting periplasm with the central cavity strongly implicate that each protomer has its own substrate translocation path leading from the central cavity of the trimer to the outer-leaflet and periplasm. At the moment it is unknown whether substrate(s) translocation occurs independently by each of the protomers or that translocation has a synchronized character, due to the interactions within the trimer. Asp⁴⁰⁷, Asp⁴⁸⁰ and Lys⁹⁴⁰, located in the middle of the TMS 4 and the TMS 10 possibly form the proton translocation pathway (Murakami *et al.*, 2002) and are essential for the transport activity of AcrB (Murakami *et al.*, 2002). Homologues residues are indispensable in other RND transporters (Murakami *et al.*, 2002; Guan and Nakae, 2001; Aires *et al.*, 2002). The lack of interactions between triads of these residues from different protomers suggests that proton translocation occurs independently by each monomer. The available biochemical data on substrate recognition by AcrB (Elkins and Nikaido, 2002; Tikhonova *et al.*, 2002) and other (Tikhonova *et al.*, 2002; Elkins and Nikaido, 2002; Mao *et al.*, 2002; Eda *et al.*, 2003) RND-MDR transporters are in agreement with the presented structure of ligand-bound AcrB and confirm an important role of the periplasmic part of these transporters in determining their substrate specificity. Establishing the exact role of the membrane domain of the RND transporters in substrate recognition requires further investigation. In this respect it is relevant to note that *P. aeruginosa* expressing MexA-MexB-OprM multidrug extrusion system showed reduced accumulation of a fluorescent substrate in the inner leaflet of the cytoplasmic membrane (Ocktan *et al.*, 1997) indicating that the RND transporter MexB binds substrates from the membrane.

Murakami *et al.* (Murakami *et al.*, 2003) investigated the importance of the α -helix which forms the side of the central pore in the AcrB trimer (Murakami *et al.*, 2002). All 21 residues of this pore helix were mutated one by one to cysteines. Five of these mutants showed significantly reduced transport activity and drug resistance. These five mutated residues are located on that side of the pore helix which faces the lumen of the pore (Murakami *et al.*, 2003). Two mutants which showed the greatest loss of activity of all constructed mutants, were found to form spontaneously disulfide cross-linked dimers, suggesting that a conformational change of the pore is necessary during the transport process (Murakami *et al.*, 2003).

The authors (Murakami *et al.*, 2003) proposed that the central pore itself may be involved in determining the substrate specificity of AcrB. The conservation of the amino acid sequence of the pore forming α -helix among the RND-MDR transporters displaying different substrate specificities (Murakami *et al.*, 2003) points towards a structural importance of this motif for proper closing and opening of the central pore. Since the current model of AcrB mediated drug transport involves entry of drugs to the central cavity via side vestibules, it is reasonable to speculate that the residues at the vestibule entrance play a role in substrate selection (Yu *et al.*, 2003b).

The analysis of resistance profiles mediated by hybrids of AcrB of *E. coli* and MexB of *P. aeruginosa* provided evidence that the large periplasmic loop 2 of AcrB plays an important role in determining the substrate specificity of the transporter (Tikhonova *et al.*, 2002). The important role of the periplasmic domains in the drug specificities of RND transporters has been confirmed in domain replacement studies of the AcrB and AcrD transporters of *E. coli* (Elkins and Nikaido, 2002). The replacement of the two large periplasmic loops of AcrD with the corresponding loops of AcrB converted the substrate range of AcrD to the broader one that is typical for AcrB (Elkins and Nikaido, 2002). Analogously, replacement of the two large periplasmic loops in AcrB with those of AcrD yielded a transporter that has a narrower, AcrD like substrates spectrum (Elkins and Nikaido, 2002). Similar results were obtained recently for *P. aeruginosa* transporters MexY and MexB (Eda *et al.*, 2003).

Analysis of spontaneous mutants of *P. aeruginosa* which had altered the substrate specificity of the MexCD-OprJ efflux system revealed that all amino acid substitutions occurred in the large periplasmic loops of the RND protein MexD (Mao *et al.*, 2002). It appeared that substitution of certain amino acids by a positively charged lysine was necessary to yield mutants transporting negatively charged β -lactams (Mao *et al.*, 2002). Moreover, MexD variants lacking Glu⁸⁹ became defective in the transport of the positively charged substrates pyronin Y and ethidium (Mao *et al.*, 2002). These observations suggest that the formation of specific ion pairs is necessary for the binding of charged compounds (Mao *et al.*, 2002).

Coupling of protons to drug transport

In contrast to the extensive knowledge concerning the localization of the substrate binding site(s) and principles of the substrate-transporter interactions little is known about the interactions of protons with the pmf driven transporters. EmrE of *E. coli* is the only member of the SMR family that has been studied in detail in this respect. The high conservation of the amino acid sequence of the SMR transporters allows extrapolations to other members of this family. Glu¹⁴ located in the first putative TMS of EmrE is strictly conserved in more than 50 homologues of EmrE and is the only charged residue essential for binding and transport of substrates (Yerushalmi and Schuldiner, 2000c; Yerushalmi *et al.*, 2001; Muth and Schuldiner, 2000). The pH dependence of TPP⁺ binding reflects the pK of the carboxyl at position 14, hence TPP⁺ binds to EmrE

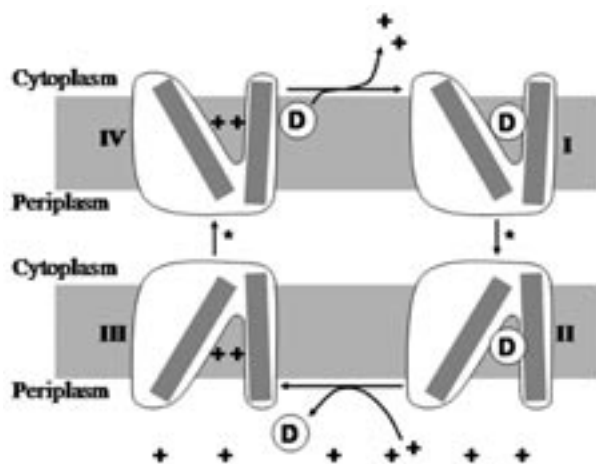


Figure 4. Proposed structural transport mechanism of EmrE. EmrE binds TPP⁺ from either the inner leaflet of the membrane or from the cytoplasm (1) and a conformational change (*) involving the change in tilt of helices occurs to open the binding chamber to the periplasm (2). Proton binding displaces TPP⁺ into the periplasm (3), and a second proton-driven conformational change (*) re-orientates the binding site to face the cytoplasm (4). TPP⁺ is represented as a red ball and protons as blue balls, labeled '+'. Picture is based on Ref. (Ubarretxena-Belandia *et al.*, 2003) with permission.

after release of proton from Glu¹⁴ (Muth and Schuldiner, 2000; Yerushalmi *et al.*, 2001). Also the release of bound TPP⁺ is affected by pH and is stimulated at acidic pH, indicating that protonation of the binding domain is required for substrate release (Muth and Schuldiner, 2000). Based on these observations Schuldiner and co-workers proposed that Glu¹⁴ is an essential part of the binding domain shared by substrates and protons, and that its occupancy is mutually exclusive (Fig. 4; reviewed in (Yerushalmi and Schuldiner, 2000b; Yerushalmi and Schuldiner, 2000a)). According to this model the two Glu¹⁴ residues located in helix 1 of adjacent monomers in the asymmetric dimer of EmrE (Ubarretxena-Belandia *et al.*, 2003) will participate in binding of one TPP⁺ molecule. The substrate enters EmrE either from the inner leaflet of the cytoplasmic membrane or directly from the cytoplasm. Subsequently, the occupied substrate binding site becomes modified in such a way that it is accessible to the other face of the membrane. Next, binding of protons to both Glu¹⁴ residues induces the release of substrate at the periplasmic surface. After protonation the binding site relaxes back to the cytoplasmic side of the membrane whereupon a new cycle can start (Ubarretxena-Belandia *et al.*, 2003). Such transport mechanism implicates a 1 to 2 coupling stoichiometry between monovalent cationic substrates of EmrE and protons. This stoichiometry predicts an electrogenic nature of the EmrE catalyzed transport reaction. The role of the transmembrane proton gradient (ΔpH) in driving EmrE-mediated transport of monovalent organic cations is well documented (Yerushalmi *et al.*, 1995) however the role of the $\Delta\psi$ has not been established. With a H⁺/substrate stoichiometry of two, the membrane potential would be expected to act as a driving force for the EmrE-dependent extrusion of monovalent cations.

The recently reported 3.8 Å resolution structure of EmrE did not solve the uncertainty about its oligomeric state (Ma and Chang, 2004). In EmrE crystals dimer of dimers were found. Interestingly the monomers within one dimer have inverted topologies and significantly different conformations of TMS 4: in one monomer TMS 4 is almost parallel to the membrane surface while in the second monomer TMS 4 protrudes the surface of the membrane into the periplasm (Ma and Chang, 2004). The presented structure raises intriguing questions about the mechanism of insertion of the same polypeptide in two different orientations and conformations. Labelling of single cysteine mutants of EmrE showed an intracellular location of the C-terminus following TMS 4 which is consistent with a classical membrane topology of EmrE with four α -helices protruding the membrane in a zig-zag manner (Ninio *et al.*, 2004). The middle part of the TMS 4 was also shown to be inaccessible to *N*-ethylmaleimide and thus most likely membrane embedded (Mordoch *et al.*, 1999). These observations are not consistent with the topology model of EmrE found in the crystals. A detailed study of the structure of the C-terminal part of the transporter in its native membrane environment is needed to solve this discrepancy.

Studies of the driving forces of the MdfA-mediated transport revealed that this transporter catalysis electroneutral transport of monovalent cationic substrates and electrogenic transport of neutral substrates (Lewinson *et al.*, 2003). It has been proposed that MdfA has a H⁺/drug stoichiometry of 1 for all the substrates. Since the charges of the substrates differ, the electrogenicities of the different transport reactions will differ (Lewinson *et al.*, 2003). Glu²⁶, the only membrane embedded charged residue in MdfA (Edgar and Bibi, 1997; Adler and Bibi, 2002) would be an obvious candidate for participating in the proton translocation, but despite that its critical role in transport of cationic substrates it is not an indispensable residue in transport of neutral substrates (Edgar and Bibi, 1999). Other residues must therefore form the proton translocation path of MdfA (Adler and Bibi, 2003). The presence of a pmf was reported to increase substrate-mediated protection against *N*-ethylmaleimide labelling of a cysteine residue in a cluster of residues involved in substrate binding by MdfA (Adler and Bibi, 2003). This cluster is located at the level of the inner leaflet of the membrane (Adler and Bibi, 2003). The opposite effect of the pmf was observed on substrate-mediated protection of a cysteine residue placed at the level of the outer leaflet (Adler and Bibi, 2003). These observations suggest that a pmf increases during transport the substrate affinity of the inner-leaflet embedded substrate binding site and decreases the affinity of the outer-leaflet embedded substrate release site thereby facilitating the release of substrate to the periplasm (Adler and Bibi, 2003). However, the residues involved in sensing a pmf by MdfA still await identification.

The *lactococcal* transporter LmrP has three carboxylic residues within its membrane domain (Mazurkiewicz *et al.*, 2002). Two of these, Asp¹⁴² and Glu³²⁷, located in the TMSs 5 and 10, respectively, appeared to be important for the activity of the transporter. However, substrate binding studies showed that only glutamate is essential

for binding of Hoechst 33342 but that none of these two residues is critical for binding of ethidium (Mazurkiewicz *et al.*, 2002). Analysis of the role of the ΔpH and the $\Delta\psi$ in energizing transport mediated by wild type LmrP or D142C and E327C mutants, revealed that wild type LmrP performs electrogenic transport of the monovalent cation ethidium, while the two mutants catalyze electroneutral transport reaction, suggesting that Asp¹⁴² and Glu³²⁷ participate in proton coupling (Mazurkiewicz *et al.*, 2004). Secondary transporters can catalyze not only active transport of a substrate but in the absence of the driving force also can mediate downhill flux of substrates or exchange of substrates. It has been demonstrated that in non-energized cells LmrP facilitates downhill influx and efflux of ethidium proving that LmrP is a true secondary transporter (Mazurkiewicz *et al.*, 2004a). Interestingly, mutants of LmrP with energy-uncoupled phenotype have been identified. Although these mutants are not capable of active transport they catalyze downhill fluxes of substrates. Expression of such mutants caused rapid, electrical potential driven influx of cationic substrates into cells of *L. lactis* (Mazurkiewicz *et al.*, 2004). Due to this facilitated influx of drugs cells expressing uncoupled mutants were more susceptible to toxic compounds than LmrP non-expressing cells (Mazurkiewicz *et al.*, 2004a). These notions put forward a new possibility for treatment of drug-resistant microbial pathogens, since modulators of secondary drug transporters that uncouple drug efflux from proton influx would allow electrical potential-driven influx of cationic drugs (Mazurkiewicz *et al.*, 2004a).

A significant body of evidence (see the section *The case of the RND transporters*) indicates that the periplasmic domain of the RND-MDR transporters is involved in substrate binding, while proton translocation occurs via the membrane domain. However it is still possible that translocation of some substrates can also occur from the inner leaflet of the membrane and not only from the periplasmic space. The interesting question arises how substrate translocation through the periplasmic part of the protein is coupled to proton translocation via the membrane embedded domain? The crystallographic data showed that the three tested cationic substrates bind to different residues of AcrB (Yu *et al.*, 2003a). All this various substrate-protein interactions must result in a coupled transport of drugs and protons. Murakami and Yamaguchi (Murakami and Yamaguchi, 2003) proposed that active transport results from the difference in substrate binding affinity between deprotonated and protonated forms of AcrB. In deprotonated AcrB, the pore is closed and the substrate is trapped in the cavity. When the transmembrane ion triad (Asp⁴⁰⁷, Asp⁴⁰⁸ and Lys⁹⁴⁰) is protonated the central pore is open while the backward pathway is closed. If the substrate binding affinity at the outside open form is significantly lower than that of the inside-open form, the substrate is actively extruded (Murakami and Yamaguchi, 2003).

Conclusions

The pmf driven MDR transporters are a very diverse group of transporters composed of members of three large families: the Small Multidrug Resistance family, the Major Facilitator Superfamily and the Resistance-Nodulation-cell

Division family. These protein families differ with respect to size, oligomeric state, and transport mechanism of their members, but share significant similarities in the mechanism of substrate recognition. Structural and biochemical data indicate that these transporters, irrespectively of the cellular compartment from which the substrates are recruited, have large or multiple substrate interaction sites with flexible structures, allowing multiple hydrophobic and electrostatic interactions with various drugs. The structure of substrate bound AcrB (Yu *et al.*, 2003a) showed that the principles of drug binding can be the same for membrane proteins and transcriptional regulators of MDR protein encoding genes (Zheleznova *et al.*, 1999; Schumacher *et al.*, 2001). Experimental data shows that the substrate binding sites of the SMR and MFS transporters are membrane embedded. Moreover, multiple ligand binding sites seem to be common for the MFS and RND family. Notably, these two families show differences with respect to the transport mechanism. The monomeric MFS transporters work according to the 'hydrophobic vacuum cleaner' model of transport, whereas the trimeric RND transporters can pick up many of their substrates from the periplasmic side of cytoplasmic membrane or from the inner leaflet of the membrane, and via accessory proteins extrude them directly beyond the outer membrane of the Gram-negative bacterium. The presence of these two different transport mechanisms may have practical significance. RND transporters may complement the functions of MFS or SMR transporters since MFS/SMR transporters may increase drug concentration in the periplasm and the outer leaflet of the cytoplasmic membrane and thus allow efficient transport of these compounds by the RND transporters. Such a combined action of the MFS and the RND transporters would give multiplicative increase in drug resistance (Lee *et al.*, 2000; Yang *et al.*, 2003). Finally, the observation that some MDR transporters, depending on the charge of the substrate, can catalyze electrogenic or electroneutral transport reactions may have implications for the choice of therapeutic antibiotics. The extrusion of drugs carrying a number of positive charges equal or even higher than the number of translocated protons per drug molecule should be less efficient because drug excretion will depend solely on the ΔpH component of the pmf. Moreover, a $\Delta\psi$ (inside negative) will strongly stimulate cellular accumulation of compounds with multiple positive charges.

Acknowledgments

We thank Marjon Pasmooij and Jacek Lubelski for critically reading the manuscript.

References

- Adler, J. and Bibi, E. (2002). Membrane topology of the multidrug transporter MdfA: complementary gene fusion studies reveal a nonessential C-terminal domain. *J. Bacteriol.* **184**, 3313-3320.
- Adler, J. and Bibi, E. (2003). Determinants of substrate recognition by the *Escherichia coli* multidrug transporter MdfA identified on both sides of the membrane. *J. Biol. Chem.* **279**, 8957-8965.
- Ahmed, M., Borsch, C.M., Neyfakh, A.A., and Schuldiner, S. (1993). Mutants of the *Bacillus subtilis* multidrug

- transporter Bmr with altered sensitivity to the antihypertensive alkaloid reserpine. *J. Biol. Chem.* **268**, 11086-11089.
- Ahmed, M., Lyass, L., Markham, P.N., Taylor, S.S., Vazquez-Laslop, N., and Neyfakh, A.A. (1995). Two highly similar multidrug transporters of *Bacillus subtilis* whose expression is differentially regulated. *J. Bacteriol.* **177**, 3904-3910.
- Ainsa, J.A., Blokpoel, M.C., Otal, I., Young, D.B., De Smet, K.A., and Martin, C. (1998). Molecular cloning and characterization of Tap, a putative multidrug efflux pump present in *Mycobacterium fortuitum* and *Mycobacterium tuberculosis*. *J. Bacteriol.* **180**, 5836-5843.
- Aires, J.R., Pechere, J.C., Van Delden, C., and Kohler, T. (2002). Amino acid residues essential for function of the MexF efflux pump protein of *Pseudomonas aeruginosa*. *Antimicrob. Agents Chemother.* **46**, 2169-2173.
- Arkin, I.T., Russ, W.P., Lebendiker, M., and Schuldiner, S. (1996). Determining the secondary structure and orientation of EmrE, a multi-drug transporter, indicates a transmembrane four-helix bundle. *Biochemistry* **35**, 7233-7238.
- Bolhuis, H., Poelarends, G., van Veen, H.W., Driessen, A.J.M., and Konings, W.N. (1995). The *Lactococcal* LmrP gene encodes a proton motive force-dependent drug transporter. *J. Biol. Chem.* **270**, 26092-26098.
- Bolhuis, H., van Veen, H.W., Brands, J.R., Putman, M., Poolman, B., Driessen, A.J.M., and Konings, W.N. (1996). Energetics and mechanism of drug transport mediated by the *lactococcal* multidrug transporter LmrP. *J. Biol. Chem.* **271**, 24123-24128.
- Brown, M.H., Paulsen, I.T., and Skurray, R.A. (1999). The multidrug efflux protein NorM is a prototype of a new family of transporters. *Mol. Microbiol.* **31**, 394-395.
- Chuan-chuen, R., Narasaki, C.T., and Schweizer, H.P. (2002). The MexJK efflux pump of *Pseudomonas aeruginosa* requires OprM for antibiotic efflux but not for efflux of triclosan. *J. Bacteriol.* **184**, 5036-5044.
- Colmer, J.A., Fralick, J.A., and Hamood, A.N. (1998). Isolation and characterization of a putative multidrug resistance pump from *Vibrio cholerae*. *Mol. Microbiol.* **27**, 63-72.
- De Rossi, E., Branzoni, M., Cantoni, R., Milano, A., Riccardi, G., and Ciferri, O. (1998). mmr, a *Mycobacterium tuberculosis* gene conferring resistance to small cationic dyes and inhibitors. *J. Bacteriol.* **180**, 6068-6071.
- Dey, S., Ramachandra, M., Pastan, I., Gottesman, M.M., and Ambudkar, S.V. (1997). Evidence for two nonidentical drug-interaction sites in the human P-glycoprotein. *Proc. Natl. Acad. Sci. U. S. A* **94**, 10594-10599.
- Eda, S., Maseda, H., and Nakae, T. (2003). An elegant means of self-protection in gram-negative bacteria by recognizing and extruding xenobiotics from the periplasmic space. *J. Biol. Chem.* **278**, 2085-2088.
- Edgar, R. and Bibi, E. (1997). MdfA, an *Escherichia coli* multidrug resistance protein with an extraordinarily broad spectrum of drug recognition. *J. Bacteriol.* **179**, 2274-2280.
- Edgar, R. and Bibi, E. (1999). A single membrane-embedded negative charge is critical for recognizing positively charged drugs by the *Escherichia coli* multidrug resistance protein MdfA. *EMBO J.* **18**, 822-832.
- Elkins, C.A. and Nikaido, H. (2002). Substrate specificity of the RND-type multidrug efflux pumps AcrB and AcrD of *Escherichia coli* is determined predominantly by two large periplasmic loops. *J. Bacteriol.* **184**, 6490-6498.
- Fujihira, E., Tamura, N., and Yamaguchi, A. (2002). Membrane topology of a multidrug efflux transporter, AcrB, in *Escherichia coli*. *J. Biochem. (Tokyo)* **131**, 145-151.
- Gill, M.J., Brenwald, N.P., and Wise, R. (1999). Identification of an efflux pump gene, pmrA, associated with fluoroquinolone resistance in *Streptococcus pneumoniae*. *Antimicrob. Agents Chemother.* **43**, 187-189.
- Gotoh, N., Tsujimoto, H., Poole, K., Yamagishi, J., and Nishino, T. (1995). The outer membrane protein OprM of *Pseudomonas aeruginosa* is encoded by oprK of the mexA-mexB-oprK multidrug resistance operon. *Antimicrob. Agents Chemother.* **39**, 2567-2569.
- Gottesman, M.M. and Pastan, I. (1993). Biochemistry of multidrug resistance mediated by the multidrug transporter. *Annu. Rev. Biochem.* **62**, 385-427.
- Griffith, J.K., Baker, M.E., Rouch, D.A., Page, M.G., Skurray, R.A., Paulsen, I.T., Chater, K.F., Baldwin, S.A., and Henderson, P.J. (1992). Membrane transport proteins: implications of sequence comparisons. *Curr. Opin. Cell Biol.* **4**, 684-695.
- Gros, P., Croop, J., and Housman, D. (1986). Mammalian multidrug resistance gene: complete cDNA sequence indicates strong homology to bacterial transport proteins. *Cell* **47**, 371-380.
- Gruol, D.J., King, M.N., and Kuehne, M.E. (2002). Evidence for the locations of distinct steroid and Vinca alkaloid interaction domains within the murine mdr1b P-glycoprotein. *Mol. Pharmacol.* **62**, 1238-1248.
- Guan, L., Ehrmann, M., Yoneyama, H., and Nakae, T. (1999). Membrane topology of the xenobiotic-exporting subunit, MexB, of the MexA, B-OprM extrusion pump in *Pseudomonas aeruginosa*. *J. Biol. Chem.* **274**, 10517-10522.
- Guan, L. and Nakae, T. (2001). Identification of essential charged residues in transmembrane segments of the multidrug transporter MexB of *Pseudomonas aeruginosa*. *J. Bacteriol.* **183**, 1734-1739.
- Gutman, N., Steiner-Mordoch, S., and Schuldiner, S. (2003). An amino acid cluster around the essential Glu-14 is part of the substrate- and proton-binding domain of EmrE, a multidrug transporter from *Escherichia coli*. *J. Biol. Chem.* **278**, 16082-16087.
- Higgins, C.F. and Gottesman, M.M. (1992). Is the multidrug transporter a flippase? *Trends Biochem. Sci.* **17**, 18-21.
- Huda, M.N., Chen, J., Morita, Y., Kuroda, T., Mizushima, T., and Tsuchiya, T. (2003a). Gene cloning and characterization of VcrM, a Na⁺-coupled multidrug efflux pump, from *Vibrio cholerae* non-O1. *Microbiol. Immunol.* **47**, 419-427.

- Huda, M.N., Lee, E.W., Chen, J., Morita, Y., Kuroda, T., Mizushima, T., and Tsuchiya, T. (2003b). Molecular cloning and characterization of an ABC multidrug efflux pump, VcaM, in Non-O1 *Vibrio cholerae*. *Antimicrob. Agents Chemother.* **47**, 2413-2417.
- Huda, M.N., Morita, Y., Kuroda, T., Mizushima, T., and Tsuchiya, T. (2001). Na⁺-driven multidrug efflux pump VcmA from *Vibrio cholerae* non-O1, a non-halophilic bacterium. *FEMS Microbiol. Lett.* **203**, 235-239.
- Jack, D.L., Storms, M.L., Tchieu, J.H., Paulsen, I.T., and Saier, M.H., Jr. (2000). A broad-specificity multidrug efflux pump requiring a pair of homologous SMR-type proteins. *J. Bacteriol.* **182**, 2311-2313.
- Jack, D.L., Yang, N.M., and Saier, M.H., Jr. (2001). The drug/metabolite transporter superfamily. *Eur. J. Biochem.* **268**, 3620-3639.
- Jager, W., Kalinowski, J., and Puhler, A. (1997). A *Corynebacterium glutamicum* gene conferring multidrug resistance in the heterologous host *Escherichia coli*. *J. Bacteriol.* **179**, 2449-2451.
- Kazama, H., Hamashima, H., Sasatsu, M., and Arai, T. (1999). Characterization of the antiseptic-resistance gene qacE delta 1 isolated from clinical and environmental isolates of *Vibrio parahaemolyticus* and *Vibrio cholerae* non-O1. *FEMS Microbiol. Lett.* **174**, 379-384.
- Klyachko, K.A., Schuldiner, S., and Neyfakh, A.A. (1997). Mutations affecting substrate specificity of the *Bacillus subtilis* multidrug transporter Bmr. *J. Bacteriol.* **179**, 2189-2193.
- Kohler, T., Michea-Hamzehpour, M., Henze, U., Gotoh, N., Curty, L.K., and Pechere, J.C. (1997). Characterization of MexE-MexF-OprN, a positively regulated multidrug efflux system of *Pseudomonas aeruginosa*. *Mol. Microbiol.* **23**, 345-354.
- Koronakis, V., Sharff, A., Koronakis, E., Luisi, B., and Hughes, C. (2000). Crystal structure of the bacterial membrane protein TolC central to multidrug efflux and protein export. *Nature* **405**, 914-919.
- Lacroix, F.J., Cloeckaert, A., Grepinet, O., Pinault, C., Popoff, M.Y., Waxin, H., and Pardon, P. (1996). *Salmonella typhimurium* acrB-like gene: identification and role in resistance to biliary salts and detergents and in murine infection. *FEMS Microbiol. Lett.* **135**, 161-167.
- Lee, A., Mao, W., Warren, M.S., Mistry, A., Hoshino, K., Okumura, R., Ishida, H., and Lomovskaya, O. (2000). Interplay between efflux pumps may provide either additive or multiplicative effects on drug resistance. *J. Bacteriol.* **182**, 3142-3150.
- Levy, S.B. (1992). Active efflux mechanisms for antimicrobial resistance. *Antimicrob. Agents Chemother.* **36**, 695-703.
- Lewinson, O., Adler, J., Poelarends, G.J., Mazurkiewicz, P., Driessen, A.J., and Bibi, E. (2003). The *Escherichia coli* multidrug transporter MdfA catalyzes both electrogenic and electroneutral transport reactions. *Proc. Natl. Acad. Sci. U. S. A* **100**, 1667-1672.
- Lewinson, O. and Bibi, E. (2001). Evidence for simultaneous binding of dissimilar substrates by the *Escherichia coli* multidrug transporter MdfA. *Biochemistry* **40**, 12612-12618.
- Li, X.Z., Nikaido, H., and Poole, K. (1995). Role of mexA-mexB-oprM in antibiotic efflux in *Pseudomonas aeruginosa*. *Antimicrob. Agents Chemother.* **39**, 1948-1953.
- Li, Y., Mima, T., Komori, Y., Morita, Y., Kuroda, T., Mizushima, T., and Tsuchiya, T. (2003). A new member of the tripartite multidrug efflux pumps, MexVW-OprM, in *Pseudomonas aeruginosa*. *J. Antimicrob. Chemother.* **52**, 572-575.
- Litman, T., Zeuthen, T., Skovsgaard, T., and Stein, W.D. (1997). Competitive, non-competitive and cooperative interactions between substrates of P-glycoprotein as measured by its ATPase activity. *Biochim. Biophys. Acta* **1361**, 169-176.
- Littlejohn, T.G., Paulsen, I.T., Gillespie, M.T., Tennent, J.M., Midgley, M., Jones, I.G., Purewal, A.S., and Skurray, R.A. (1992). Substrate specificity and energetics of antiseptic and disinfectant resistance in *Staphylococcus aureus*. *FEMS Microbiol. Lett.* **74**, 259-265.
- Lomovskaya, O. and Lewis, K. (1992). Emr, an *Escherichia coli* locus for multidrug resistance. *Proc. Natl. Acad. Sci. U. S. A* **89**, 8938-8942.
- Lyon, B.R. and Skurray, R. (1987). Antimicrobial resistance of *Staphylococcus aureus*: genetic basis. *Microbiol. Rev.* **51**, 88-134.
- Ma, C. and Chang, G. (2004). Structure of the multidrug resistance efflux transporter EmrE from *Escherichia coli*. *Proc. Natl. Acad. Sci. U. S. A* **101**, 2852-2857.
- Ma, D., Cook, D.N., Alberti, M., Pon, N.G., Nikaido, H., and Hearst, J.E. (1993). Molecular cloning and characterization of acrA and acrE genes of *Escherichia coli*. *J. Bacteriol.* **175**, 6299-6313.
- Ma, D., Cook, D.N., Alberti, M., Pon, N.G., Nikaido, H., and Hearst, J.E. (1995). Genes acrA and acrB encode a stress-induced efflux system of *Escherichia coli*. *Mol. Microbiol.* **16**, 45-55.
- Mao, W., Warren, M.S., Black, D.S., Satou, T., Murata, T., Nishino, T., Gotoh, N., and Lomovskaya, O. (2002). On the mechanism of substrate specificity by resistance nodulation division (RND)-type multidrug resistance pumps: the large periplasmic loops of MexD from *Pseudomonas aeruginosa* are involved in substrate recognition. *Mol. Microbiol.* **46**, 889-901.
- Marger, M.D. and Saier, M.H., Jr. (1993). A major superfamily of transmembrane facilitators that catalyze uniport, symport and antiport. *Trends Biochem. Sci.* **18**, 13-20.
- Masaoka, Y., Ueno, Y., Morita, Y., Kuroda, T., Mizushima, T., and Tsuchiya, T. (2000). A two-component multidrug efflux pump, EbrAB, in *Bacillus subtilis*. *J. Bacteriol.* **182**, 2307-2310.
- Mazurkiewicz, P., Konings, W.N., and Poelarends, G.J. (2002). Acidic residues in the *lactococcal* multidrug efflux pump LmrP play critical roles in transport of lipophilic cationic compounds. *J. Biol. Chem.* **277**, 26081-26088.
- Mazurkiewicz, P., Poelarends, G.J., Driessen, A.J., and Konings, W.N. (2004a). Facilitated drug influx by an energy-uncoupled secondary multidrug transporter. *J. Biol. Chem.* **279**, 103-108.

- Mazurkiewicz, P., Driessen, A.J., and Konings, W.N. (2004b). Energetics of wild type and mutant multidrug resistance secondary transporter LmrP of *Lactococcus lactis*. *Biochim. Biophys. Acta*. In press.
- Mazzariol, A., Cornaglia, G., and Nikaido, H. (2000). Contributions of the AmpC beta-lactamase and the AcrAB multidrug efflux system in intrinsic resistance of *Escherichia coli* K-12 to beta-lactams. *Antimicrob. Agents Chemother.* **44**, 1387-1390.
- Mitchell, B.A., Brown, M.H., and Skurray, R.A. (1998). QacA multidrug efflux pump from *Staphylococcus aureus*: comparative analysis of resistance to diamidines, biguanidines, and guanylhydrazones. *Antimicrob. Agents Chemother.* **42**, 475-477.
- Mitchell, B.A., Paulsen, I.T., Brown, M.H., and Skurray, R.A. (1999). Bioenergetics of the *staphylococcal* multidrug export protein QacA. Identification of distinct binding sites for monovalent and divalent cations. *J. Biol. Chem.* **274**, 3541-3548.
- Mordoch, S.S., Granot, D., Lebendiker, M., and Schuldiner, S. (1999). Scanning cysteine accessibility of EmrE, an H⁺-coupled multidrug transporter from *Escherichia coli*, reveals a hydrophobic pathway for solutes. *J. Biol. Chem.* **274**, 19480-19486.
- Morita, Y., Kodama, K., Shiota, S., Mine, T., Kataoka, A., Mizushima, T., and Tsuchiya, T. (1998). NorM, a putative multidrug efflux protein, of *Vibrio parahaemolyticus* and its homolog in *Escherichia coli*. *Antimicrob. Agents Chemother.* **42**, 1778-1782.
- Murakami, S., Nakashima, R., Yamashita, E., and Yamaguchi, A. (2002). Crystal structure of bacterial multidrug efflux transporter AcrB. *Nature* **419**, 587-593.
- Murakami, S., Tamura, N., Saito, A., Hirata, T., and Yamaguchi, A. (2003). Extra-membrane central pore of multidrug exporter AcrB in *Escherichia coli* plays an important role in drug transport. *J. Biol. Chem.* **279**, 3743-3748.
- Murakami, S. and Yamaguchi, A. (2003). Multidrug-exporting secondary transporters. *Curr. Opin. Struct. Biol.* **13**, 443-452.
- Murata, T., Kuwagaki, M., Shin, T., Gotoh, N., and Nishino, T. (2002). The substrate specificity of tripartite efflux systems of *Pseudomonas aeruginosa* is determined by the RND component. *Biochem. Biophys. Res. Commun.* **299**, 247-251.
- Murray, D.S., Schumacher, M.A., and Brennan, R.G. (2004). Crystal structures of QacR-diamidine complexes reveal additional multidrug-binding modes and a novel mechanism of drug charge neutralization. *J. Biol. Chem.* **279**, 14365-14371.
- Muth, T.R. and Schuldiner, S. (2000). A membrane-embedded glutamate is required for ligand binding to the multidrug transporter EmrE. *EMBO J.* **19**, 234-240.
- Neyfakh, A.A., Bidnenko, V.E., and Chen, L.B. (1991). Efflux-mediated multidrug resistance in *Bacillus subtilis*: similarities and dissimilarities with the mammalian system. *Proc. Natl. Acad. Sci. U. S. A* **88**, 4781-4785.
- Nikaido, H. (1994). Prevention of drug access to bacterial targets: permeability barriers and active efflux. *Science* **264**, 382-388.
- Nikaido, H., Basina, M., Nguyen, V., and Rosenberg, E.Y. (1998). Multidrug efflux pump AcrAB of *Salmonella typhimurium* excretes only those beta-lactam antibiotics containing lipophilic side chains. *J. Bacteriol.* **180**, 4686-4692.
- Nilsen, I.W., Bakke, I., Vader, A., Olsvik, O., and El Gewely, M.R. (1996). Isolation of cmr, a novel *Escherichia coli* chloramphenicol resistance gene encoding a putative efflux pump. *J. Bacteriol.* **178**, 3188-3193.
- Ninio, S., Elbaz, Y., and Schuldiner, S. (2004). The membrane topology of EmrE - a small multidrug transporter from *Escherichia coli*. *FEBS Lett.* **562**, 193-196.
- Ninio, S. and Schuldiner, S. (2003). Characterization of an *archaeal* multidrug transporter with a unique amino acid composition. *J. Biol. Chem.* **278**, 12000-12005.
- Nishino, K. and Yamaguchi, A. (2001). Analysis of a complete library of putative drug transporter genes in *Escherichia coli*. *J. Bacteriol.* **183**, 5803-5812.
- Ocaktan, A., Yoneyama, H., and Nakae, T. (1997). Use of fluorescence probes to monitor function of the subunit proteins of the MexA-MexB-oprM drug extrusion machinery in *Pseudomonas aeruginosa*. *J. Biol. Chem.* **272**, 21964-21969.
- Paulsen, I.T., Brown, M.H., Dunstan, S.J., and Skurray, R.A. (1995). Molecular characterization of the *staphylococcal* multidrug resistance export protein QacC. *J. Bacteriol.* **177**, 2827-2833.
- Paulsen, I.T., Brown, M.H., Littlejohn, T.G., Mitchell, B.A., and Skurray, R.A. (1996a). Multidrug resistance proteins QacA and QacB from *Staphylococcus aureus*: membrane topology and identification of residues involved in substrate specificity. *Proc. Natl. Acad. Sci. U. S. A* **93**, 3630-3635.
- Paulsen, I.T., Brown, M.H., and Skurray, R.A. (1996b). Proton-dependent multidrug efflux systems. *Microbiol. Rev.* **60**, 575-608.
- Paulsen, I.T., Littlejohn, T.G., Radstrom, P., Sundstrom, L., Skold, O., Swedberg, G., and Skurray, R.A. (1993). The 3' conserved segment of integrons contains a gene associated with multidrug resistance to antiseptics and disinfectants. *Antimicrob. Agents Chemother.* **37**, 761-768.
- Paulsen, I.T., Park, J.H., Choi, P.S., and Saier, M.H., Jr. (1997). A family of gram-negative bacterial outer membrane factors that function in the export of proteins, carbohydrates, drugs and heavy metals from gram-negative bacteria. *FEMS Microbiol. Lett.* **156**, 1-8.
- Paulsen, I.T. and Skurray, R.A. (1993). Topology, structure and evolution of two families of proteins involved in antibiotic and antiseptic resistance in eukaryotes and prokaryotes - an analysis. *Gene* **124**, 1-11.
- Paulsen, I.T., Skurray, R.A., Tam, R., Saier, M.H., Jr., Turner, R.J., Weiner, J.H., Goldberg, E.B., and Grinius, L.L. (1996c). The SMR family: a novel family of multidrug efflux proteins involved with the efflux of lipophilic drugs. *Mol. Microbiol.* **19**, 1167-1175.
- Poole, K., Gotoh, N., Tsujimoto, H., Zhao, Q., Wada, A., Yamasaki, T., Neshat, S., Yamagishi, J., Li, X.Z., and Nishino, T. (1996). Overexpression of the mexC-mexD-oprJ efflux operon in nfxB-type multidrug-resistant strains of *Pseudomonas aeruginosa*. *Mol. Microbiol.* **21**, 713-724.

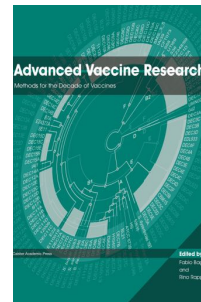
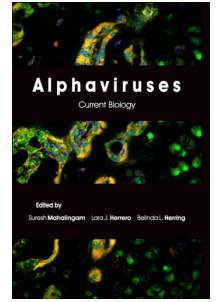
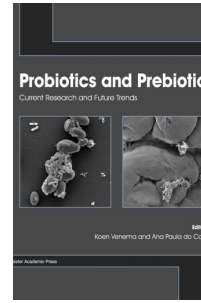
- Poole, K., Heinrichs, D.E., and Neshat, S. (1993). Cloning and sequence analysis of an EnvCD homologue in *Pseudomonas aeruginosa*: regulation by iron and possible involvement in the secretion of the siderophore pyoverdine. *Mol. Microbiol.* *10*, 529-544.
- Purewal, A.S. (1991). Nucleotide sequence of the ethidium efflux gene from *Escherichia coli*. *FEMS Microbiol. Lett.* *66*, 229-231.
- Putman, M., Koole, L.A., van Veen, H.W., and Konings, W.N. (1999). The secondary multidrug transporter LmrP contains multiple drug interaction sites. *Biochemistry* *38*, 13900-13905.
- Putman, M., van Veen, H.W., Degener, J.E., and Konings, W.N. (2000). Antibiotic resistance: era of the multidrug pump. *Mol. Microbiol.* *36*, 772-773.
- Putman, M., van Veen, H.W., Degener, J.E., and Konings, W.N. (2001). The *lactococcal* secondary multidrug transporter LmrP confers resistance to lincosamides, macrolides, streptogramins and tetracyclines. *Microbiology* *147*, 2873-2880.
- Rotem, D., Sal-man, N., and Schuldiner, S. (2001). In vitro monomer swapping in EmrE, a multidrug transporter from *Escherichia coli*, reveals that the oligomer is the functional unit. *J. Biol. Chem.* *276*, 48243-48249.
- Rouch, D.A., Cram, D.S., DiBerardino, D., Littlejohn, T.G., and Skurray, R.A. (1990). Efflux-mediated antiseptic resistance gene qacA from *Staphylococcus aureus*: common ancestry with tetracycline- and sugar-transport proteins. *Mol. Microbiol.* *4*, 2051-2062.
- Sahin-Toth, M., Karlin, A., and Kaback, H.R. (2000). Unraveling the mechanism of the lactose permease of *Escherichia coli*. *Proc. Natl. Acad. Sci. U. S. A* *97*, 10729-10732.
- Saier, M.H., and Paulsen, I.T. (2001). Phylogeny of multidrug transporters. *Semin. Cell Dev. Biol.* *12*, 205-213.
- Saier, M.H., Tam, R., Reizer, A., and Reizer, J. (1994). Two novel families of bacterial membrane proteins concerned with nodulation, cell division and transport. *Mol. Microbiol.* *11*, 841-847.
- Sakamoto, K., Margolles, A., van Veen, H.W., and Konings, W.N. (2001). Hop resistance in the beer spoilage bacterium *Lactobacillus brevis* is mediated by the ATP-binding cassette multidrug transporter HorA. *J. Bacteriol.* *183*, 5371-5375.
- Sanchez, L., Pan, W., Vinas, M., and Nikaido, H. (1997). The *acrAB* homolog of *Haemophilus influenzae* codes for a functional multidrug efflux pump. *J. Bacteriol.* *179*, 6855-6857.
- Sasatsu, M., Shima, K., Shibata, Y., and Kono, M. (1989). Nucleotide sequence of a gene that encodes resistance to ethidium bromide from a transferable plasmid in *Staphylococcus aureus*. *Nucleic Acids Res.* *17*, 10103.
- Schumacher, M.A., Miller, M.C., Grkovic, S., Brown, M.H., Skurray, R.A., and Brennan, R.G. (2001). Structural mechanisms of QacR induction and multidrug recognition. *Science* *294*, 2158-2163.
- Soskine, M., Steiner-Mordoch, S., and Schuldiner, S. (2002). Crosslinking of membrane-embedded cysteines reveals contact points in the EmrE oligomer. *Proc. Natl. Acad. Sci. U. S. A* *99*, 12043-12048.
- Spoelstra, E.C., Westerhoff, H.V., Pinedo, H.M., Dekker, H., and Lankelma, J. (1994). The multidrug-resistance-reverser verapamil interferes with cellular P-glycoprotein-mediated pumping of daunorubicin as a non-competing substrate. *Eur. J. Biochem.* *221*, 363-373.
- Steinfels, E., Orelle, C., Dalmas, O., Penin, F., Miroux, B., Di Pietro, A., and Jault, J.M. (2002). Highly efficient over-production in *E. coli* of YvcC, a multidrug-like ATP-binding cassette transporter from *Bacillus subtilis*. *Biochim. Biophys. Acta* *1565*, 1-5.
- Sulavik, M.C., Houseweart, C., Cramer, C., Jiwani, N., Murgolo, N., Greene, J., DiDomenico, B., Shaw, K.J., Miller, G.H., Hare, R., and Shimer, G. (2001). Antibiotic susceptibility profiles of *Escherichia coli* strains lacking multidrug efflux pump genes. *Antimicrob. Agents Chemother.* *45*, 1126-1136.
- Takiff, H.E., Cimino, M., Musso, M.C., Weisbrod, T., Martinez, R., Delgado, M.B., Salazar, L., Bloom, B.R., and Jacobs, W.R., Jr. (1996). Efflux pump of the proton antiporter family confers low-level fluoroquinolone resistance in *Mycobacterium smegmatis*. *Proc. Natl. Acad. Sci. U. S. A* *93*, 362-366.
- Tate, C.G., Kunji, E.R., Lebendiker, M., and Schuldiner, S. (2001). The projection structure of EmrE, a proton-linked multidrug transporter from *Escherichia coli*, at 7 Å resolution. *EMBO J.* *20*, 77-81.
- Tennent, J.M., Lyon, B.R., Midgley, M., Jones, I.G., Purewal, A.S., and Skurray, R.A. (1989). Physical and biochemical characterization of the qacA gene encoding antiseptic and disinfectant resistance in *Staphylococcus aureus*. *J. Gen. Microbiol.* *135*, 1-10.
- Tikhonova, E.B., Wang, Q., and Zgurskaya, H.I. (2002). Chimeric analysis of the multicomponent multidrug efflux transporters from gram-negative bacteria. *J. Bacteriol.* *184*, 6499-6507.
- Ubarretxena-Belandia, I., Baldwin, J.M., Schuldiner, S., and Tate, C.G. (2003). Three-dimensional structure of the bacterial multidrug transporter EmrE shows it is an asymmetric homodimer. *EMBO J.* *22*, 6175-6181.
- van Veen, H.W., Venema, K., Bolhuis, H., Oussenko, I., Kok, J., Poolman, B., Driessen, A.J., and Konings, W.N. (1996). Multidrug resistance mediated by a bacterial homolog of the human multidrug transporter MDR1. *Proc. Natl. Acad. Sci. U. S. A* *93*, 10668-10672.
- Veenhoff, L.M., Geertsma, E.R., Knol, J., and Poolman, B. (2000). Close approximation of putative alpha-helices II, IV, VII, X, and XI in the translocation pathway of the lactose transport protein of *Streptococcus thermophilus*. *J. Biol. Chem.* *275*, 23834-23840.
- Venkatesan, P. and Kaback, H.R. (1998). The substrate-binding site in the lactose permease of *Escherichia coli*. *Proc. Natl. Acad. Sci. U. S. A* *95*, 9802-9807.
- Xu, X.J., Su, X.Z., Morita, Y., Kuroda, T., Mizushima, T., and Tsuchiya, T. (2003). Molecular cloning and characterization of the HmrM multidrug efflux pump from *Haemophilus influenzae* Rd. *Microbiol. Immunol.* *47*, 937-943.
- Yamaguchi, A., Ono, N., Akasaka, T., Noumi, T., and Sawai, T. (1990). Metal-tetracycline/H⁺ antiporter of *Escherichia coli* encoded by a transposon, Tn10. The role of the conserved dipeptide, Ser65-Asp66,

- in tetracycline transport. *J. Biol. Chem.* **265**, 15525-15530.
- Yamaguchi, A., Someya, Y., and Sawai, T. (1992). Metal-tetracycline/H⁺ antiporter of *Escherichia coli* encoded by transposon Tn10. The role of a conserved sequence motif, GXXXXRXGRR, in a putative cytoplasmic loop between helices 2 and 3. *J. Biol. Chem.* **267**, 19155-19162.
- Yang, S., Clayton, S.R., and Zechiedrich, E.L. (2003). Relative contributions of AcrAB, MdfA and NorA efflux pumps to quinolone resistance in *Escherichia coli*. *J. Antimicrob. Chemother.* **51**, 545-556.
- Yerushalmi, H., Lebendiker, M., and Schuldiner, S. (1995). EmrE, an *Escherichia coli* 12-kDa multidrug transporter, exchanges toxic cations and H⁺ and is soluble in organic solvents. *J. Biol. Chem.* **270**, 6856-6863.
- Yerushalmi, H., Lebendiker, M., and Schuldiner, S. (1996). Negative dominance studies demonstrate the oligomeric structure of EmrE, a multidrug antiporter from *Escherichia coli*. *J. Biol. Chem.* **271**, 31044-31048.
- Yerushalmi, H., Mordoch, S.S., and Schuldiner, S. (2001). A single carboxyl mutant of the multidrug transporter EmrE is fully functional. *J. Biol. Chem.* **276**, 12744-12748.
- Yerushalmi, H. and Schuldiner, S. (2000a). A common binding site for substrates and protons in EmrE, an ion-coupled multidrug transporter. *FEBS Lett.* **476**, 93-97.
- Yerushalmi, H. and Schuldiner, S. (2000b). A model for coupling of H⁽⁺⁾ and substrate fluxes based on "time-sharing" of a common binding site. *Biochemistry* **39**, 14711-14719.
- Yerushalmi, H. and Schuldiner, S. (2000c). An essential glutamyl residue in EmrE, a multidrug antiporter from *Escherichia coli*. *J. Biol. Chem.* **275**, 5264-5269.
- Yoneyama, H., Ocaktan, A., Gotoh, N., Nishino, T., and Nakae, T. (1998). Subunit swapping in the Mex-extrusion pumps in *Pseudomonas aeruginosa*. *Biochem. Biophys. Res. Commun.* **244**, 898-902.
- Yoshida, H., Bogaki, M., Nakamura, S., Ubukata, K., and Konno, M. (1990). Nucleotide sequence and characterization of the *Staphylococcus aureus* norA gene, which confers resistance to quinolones. *J. Bacteriol.* **172**, 6942-6949.
- Yu, E.W., McDermott, G., Zgurskaya, H.I., Nikaido, H., and Koshland, D.E., Jr. (2003a). Structural basis of multiple drug-binding capacity of the AcrB multidrug efflux pump. *Science* **300**, 976-980.
- Yu, E.W., Aires, J.R., and Nikaido, H. (2003b). AcrB multidrug efflux pump of *Escherichia coli*: composite substrate-binding cavity of exceptional flexibility generates its extremely wide substrate specificity. *J. Bacteriol.* **185**, 5657-5664.
- Zgurskaya, H.I. and Nikaido, H. (1999). Bypassing the periplasm: reconstitution of the AcrAB multidrug efflux pump of *Escherichia coli*. *Proc. Natl. Acad. Sci. U. S. A* **96**, 7190-7195.
- Zheleznova, E.E., Markham, P.N., Neyfakh, A.A., and Brennan, R.G. (1999). Structural basis of multidrug recognition by BmrR, a transcription activator of a multidrug transporter. *Cell* **96**, 353-362.

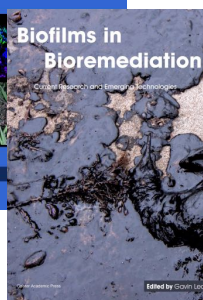
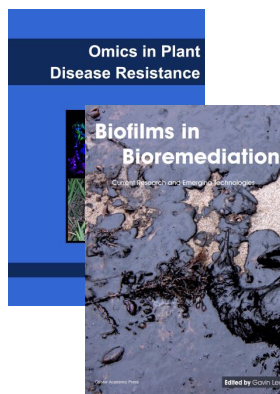
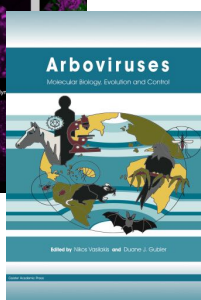
Further Reading

Caister Academic Press is a leading academic publisher of advanced texts in microbiology, molecular biology and medical research. Full details of all our publications at [caister.com](http://www.caister.com)

- **MALDI-TOF Mass Spectrometry in Microbiology**
Edited by: M Kostrzewa, S Schubert (2016)
www.caister.com/malditof
- **Aspergillus and Penicillium in the Post-genomic Era**
Edited by: RP Vries, IB Gelber, MR Andersen (2016)
www.caister.com/aspergillus2
- **The Bacteriocins: Current Knowledge and Future Prospects**
Edited by: RL Dorit, SM Roy, MA Riley (2016)
www.caister.com/bacteriocins
- **Omics in Plant Disease Resistance**
Edited by: V Bhaduria (2016)
www.caister.com/opdr
- **Acidophiles: Life in Extremely Acidic Environments**
Edited by: R Quatrini, DB Johnson (2016)
www.caister.com/acidophiles
- **Climate Change and Microbial Ecology: Current Research and Future Trends**
Edited by: J Marxsen (2016)
www.caister.com/climate
- **Biofilms in Bioremediation: Current Research and Emerging Technologies**
Edited by: G Lear (2016)
www.caister.com/biorem
- **Microalgae: Current Research and Applications**
Edited by: MN Tsaloglou (2016)
www.caister.com/microalgae
- **Gas Plasma Sterilization in Microbiology: Theory, Applications, Pitfalls and New Perspectives**
Edited by: H Shintani, A Sakudo (2016)
www.caister.com/gasplasma
- **Virus Evolution: Current Research and Future Directions**
Edited by: SC Weaver, M Denison, M Roossinck, et al. (2016)
www.caister.com/virusevol
- **Arboviruses: Molecular Biology, Evolution and Control**
Edited by: N Vasilakis, DJ Gubler (2016)
www.caister.com/arbo
- **Shigella: Molecular and Cellular Biology**
Edited by: WD Picking, WL Picking (2016)
www.caister.com/shigella
- **Aquatic Biofilms: Ecology, Water Quality and Wastewater Treatment**
Edited by: AM Romani, H Guasch, MD Balaguer (2016)
www.caister.com/aquaticbiofilms
- **Alphaviruses: Current Biology**
Edited by: S Mahalingam, L Herrero, B Herring (2016)
www.caister.com/alpha
- **Thermophilic Microorganisms**
Edited by: F Li (2015)
www.caister.com/thermophile



- **Flow Cytometry in Microbiology: Technology and Applications**
Edited by: MG Wilkinson (2015)
www.caister.com/flow
- **Probiotics and Prebiotics: Current Research and Future Trends**
Edited by: K Venema, AP Carmo (2015)
www.caister.com/probiotics
- **Epigenetics: Current Research and Emerging Trends**
Edited by: BP Chadwick (2015)
www.caister.com/epigenetics2015
- **Corynebacterium glutamicum: From Systems Biology to Biotechnological Applications**
Edited by: A Burkovski (2015)
www.caister.com/cory2
- **Advanced Vaccine Research Methods for the Decade of Vaccines**
Edited by: F Bagnoli, R Rappuoli (2015)
www.caister.com/vaccines
- **Antifungals: From Genomics to Resistance and the Development of Novel Agents**
Edited by: AT Coste, P Vandeputte (2015)
www.caister.com/antifungals
- **Bacteria-Plant Interactions: Advanced Research and Future Trends**
Edited by: J Murillo, BA Vinatzer, RW Jackson, et al. (2015)
www.caister.com/bacteria-plant
- **Aeromonas**
Edited by: J Graf (2015)
www.caister.com/aeromonas
- **Antibiotics: Current Innovations and Future Trends**
Edited by: S Sánchez, AL Demain (2015)
www.caister.com/antibiotics
- **Leishmania: Current Biology and Control**
Edited by: S Adak, R Datta (2015)
www.caister.com/leish2
- **Acanthamoeba: Biology and Pathogenesis (2nd edition)**
Author: NA Khan (2015)
www.caister.com/acanthamoeba2
- **Microarrays: Current Technology, Innovations and Applications**
Edited by: Z He (2014)
www.caister.com/microarrays2
- **Metagenomics of the Microbial Nitrogen Cycle: Theory, Methods and Applications**
Edited by: D Marco (2014)
www.caister.com/n2



Order from [caister.com/order](http://www.caister.com/order)