

Are Molecular Tools Solving the Challenges Posed by Detection of Plant Pathogenic Bacteria and Viruses?

María M. López*, Pablo Llop, Antonio Olmos, Ester Marco-Noales, Mariano Cambra and Edson Bertolini

Centro de Protección Vegetal y Biotecnología, Instituto Valenciano de Investigaciones Agrarias (IVIA). Carretera de Moncada a Náquera km 4.5, 46113 Moncada, Valencia, Spain

*For correspondence: mlopez@ivia.es

Abstract

Plant pathogenic bacteria, phytoplasmas, viruses and viroids are difficult to control, and preventive measures are essential to minimize the losses they cause each year in different crops. In this context, rapid and accurate methods for detection and diagnosis of these plant pathogens are required to apply treatments, undertake agronomic measures or proceed with eradication practices, particularly for quarantine pathogens. In recent years, there has been an exponential increase in the number of protocols based on nucleic-acid tools being those based on PCR or RT-PCR now routinely applied worldwide. Nucleic acid extraction is still necessary in many cases and in practice inhibition problems are decreasing the theoretical sensitivity of molecular detection. For these reasons, integrated protocols that include the use of molecular techniques as screening methods, followed by confirmation by other techniques supported by different biological principles are advisable. Overall, molecular techniques based on different types of PCR amplification and very especially on real-time PCR are leading to high throughput, faster and more accurate detection methods for the most severe plant pathogens, with important benefits for agriculture. Other technologies, such as isothermal amplification, microarrays, etc. have great potential, but their practical development in plant pathology is still underway. Despite these advances, there are some unsolved problems concerning the detection of many

plant pathogens due to their low titre in the plants, their uneven distribution, the existence of latent infections and the lack of validated sampling protocols. Research based on genomic advances and innovative detection methods as well as better knowledge of the pathogens' lifecycle, will facilitate their early and accurate detection, thus improving the sanitary status of cultivated plants in the near future.

Introduction

Plant pathogenic bacteria, phytoplasmas, viruses and viroids cause harmful, widespread and economically important diseases in a very broad range of plant species worldwide (Agrios, 2001; Janse, 2007). Damage is often sufficient to cause significant yield losses in cultivated plants (Schaad, 1988; Scortichini, 1995; Cambra et al., 2006b). The two main effects on agriculture are decreased production and, in a less direct way, the need of implementation of expensive management and control procedures and strategies. In addition, efficient registered products for the chemical control of bacteria are lacking and there is no chemical control available for viruses. Consequently, prevention is essential to avoid the dissemination of the pathogens through different vehicles, such as contaminated propagative plant material, vectors, irrigation water, soil, etc. (Martín et al., 2000; Janse and Wenneker, 2002; López et al., 2003; Alvarez, 2004; De Boer et al., 2007). The prevention measures demand pathogen detection methods of high sensitivity, specificity and reliability, because many phytopathogenic bacteria and viruses can remain latent in "subclinical infections", and/or in low numbers, and/or in some special physiological states in propagative plant material and in other reservoirs (Helias et al., 2000; Grey and Steck, 2001; Janse et al., 2004; Biosca et al., 2006; Ordax et al., 2006). Accurate detection of phytopathogenic organisms is crucial for virtually all aspects of plant pathology, from basic research on the biology of pathogens to the control of

the diseases they cause. Moreover, the need for rapid techniques of high accuracy is especially necessary for quarantine pathogens, because the risk of the disease and the spread of the inoculum must be reduced to nearly zero (López et al., 2003).

Here we present the state of the art of molecular detection of plant pathogenic bacteria, phytoplasmas, and viruses. In this review, detection refers to the presence of a particular target organism in plant tissues, vectors, plant products, or environmental samples, with emphasis on symptomless plants, whereas diagnosis is related to the identification of the nature and cause of a disease in plants showing symptoms (Shurtleff and Averre, 1997; Louws et al., 1999; López et al., 2006). The open question that we will try to answer is left hanging in the air: Are molecular methods solving the challenges of the high sensitivity, specificity and accuracy posed by detection of plant pathogens?

From past to present

Traditionally, the available detection and diagnostic techniques for plant pathogenic bacteria have been microscopical observation, isolation, biochemical characterisation, serology (mainly through immunofluorescence and Enzyme-Linked Immunosorbent Assay (ELISA) using polyclonal and/or monoclonal antibodies), bioassays and pathogenicity tests. Biological indexing, electron microscopy and some biochemical and staining tests have been used for testing pathogens of the genus *Spiroplasma* and phytoplasmas. For viruses and viroids, biological indexing (using herbaceous and/or woody indicator plants), electrophoresis, electron microscopy and ELISA-based techniques have been the choice.

Standard protocols for detection of plant bacteria based on isolation and further identification are time-consuming and not always sensitive and specific enough. Consequently, they are obviously not suited for routine analysis of a large number of samples. Other handicaps are the low reproducibility of identification by phenotypic traits, frequent lack of phylogenetic significance and false negatives due to stressed or injured bacteria, or those in the viable but non culturable state (VBNC), which escape from isolation. The VBNC

state is a survival strategy in which bacterial cells do not form visible colonies on non-selective solid medium, but remain viable according to culture-independent methods (Oliver, 2005). Detection of cells in particular physiological states is important, especially for quarantine organisms, because they can retain pathogenicity and constitute a hazard for plant health. On the other hand, commercially available serology-based kits, which have been developed for the most economically important pathogens, are not suitable for analysing latent infections as they usually have relatively low sensitivity and do not detect low numbers of the target in asymptomatic tissues.

There are currently many methods, which have been used to detect and/or characterise specific viral, viroids or graft-transmissible virus-like associated pathogens in plant material. The most frequently employed are biological indexing and serological tests. Biological assays were developed first and are still in widespread use, because they are simple, require minimal knowledge of the pathogen and are polyvalent (in a single host it is possible to detect most, if not all, graft-transmissible viral pathogens of some crops). Furthermore, biological indexing is still the only method of choice to detect uncharacterized but graft-transmissible agents. Its sensitivity is considered to be very high due to the viral multiplication in the host plant used as indicator. However, some isolates, despite multiplying in the host, can induce no symptoms, thus escaping detection and the major limitations are the high economic cost, the long time (weeks to months) required to obtain results, and the impossibility of large-scale use. Accuracy of plant virus detection has greatly improved due to the development of serological techniques, especially ELISA (Clark and Adams, 1977). Applying ELISA to viruses revolutionized diagnosis, making the analysis of large number of samples feasible, simpler, and with both low cost and high sensitivity. Although polyclonal antibodies frequently presented problems of specificity, the availability of specific monoclonal and recombinant antibodies solved this problem (Köhler and Milstein, 1975; Terrada et al., 2000). Nevertheless, the major limitation of this technique was its low sensitivity

outside the plants' vegetative period because the titre of some viral pathogens is usually very low.

The present

Nucleic acid-based methods are sensitive, specific and allow genetic relationships to be determined. In plant pathology, the most frequently used molecular techniques have been, first, molecular hybridisation and, afterwards, the polymerase chain reaction (PCR). Compared to traditional methods, PCR offers several advantages, because, organisms do not need to be cultured before their detection, it affords high sensitivity at least theoretically, enabling a single target molecule to be detected in a complex mixture, and it is also rapid and versatile. In fact, the different variants of PCR, have increased the accuracy of detection and diagnosis, and opened new insights into our knowledge of the ecology and population dynamics of many pathogens, providing a valuable tool for basic and applied studies in plant pathology. Detection of DNA provides evidence for the presence/absence of targets, rRNA is an indicator of cell activity or viability, and m-RNA signals specific activity and expression of certain metabolic processes (Chandler and Jarrell, 2005). However, nucleic acids extraction protocols are usually necessary to obtain a successful result when processing plant or environmental samples by molecular methods. This specific aspect, as well as primer design for PCR, will be considered below.

Molecular approaches developed over the last ten years to detect many bacteria, *Spiroplasma*, phytoplasmas, viruses, and viroids in plant or environmental samples (Louws et al., 1999; Alvarez, 2004) can be grouped as follows, according to Bonants et al. (2005), a) RNA level: RT-PCR, NASBA or AmpliDet RNA; and b) DNA level: hybridisation, FISH, and PCR variants (conventional PCR, nested PCR, co-operative PCR, multiplex PCR, real-time PCR).

Technological advances in PCR-based methods enable fast, accurate detection, quantification and characterization of plant pathogens and are now being applied to solve practical problems. For example, the use of molecular techniques in bacterial taxonomy allows different taxa of etiologically significant bacteria to

be separated (De Boer et al., 2007). Therefore, molecular diagnostics can provide the degree of discrimination needed to detect and monitor plant diseases, which is not always obtained by other types of analysis.

Despite nucleic-acid technology is the only choice when bacteria or phytoplasma have not been cultured up to date, DNA-based methods have not yet completely replaced traditional culture and phenotypic tests in the most common plant pathogens detection, because the information from several methods can be complementary. For this reason, the current trend in the European Union (EU) and European and Mediterranean Plant Protection Organization (EPPO) protocols for the detection of plant pathogens is to combine conventional, serological and molecular techniques in integrated approaches (López et al., 2003 and 2005; Alvarez, 2004). The use of polyphasic or integrated approaches for detection is advised, especially when the targets are plant quarantine bacteria or viruses (López and Cambra, 1996; López et al., 2003 and 2005; Alvarez, 2004; Janse, 2005). As an example, the recently published new versions of the official EU protocols for *Clavibacter michiganensis* subsp. *sepedonicus* (Anonymous, 2006a) and *Ralstonia solanacearum* (Anonymous, 2006b) incorporate PCR as screening test in an integrated protocol, including also serological techniques, isolation and bioassays, for higher accuracy of the detection of these quarantine pathogens. This approach, not only increases our ability to detect plant pathogens but also can provide new insights into their ecology and epidemiology (Martin et al., 2000; Alvarez, 2004). For quarantine bacteria, the isolation and proof of pathogenicity is required in the EU and EPPO current protocols. This could be substituted, after appropriate validation, by real-time PCR based on detection of m-RNA of selected target genes, which correlates with cell viability and pathogenicity. The methodology for selecting and validating a test for routine diagnosis has also been discussed (Janse, 2005).

From present to future

Molecular methods will be used increasingly in the near future. However, although better sensitivity and

specificity could be attained with new molecular techniques, it will be still necessary to obtain additional information on some other features of many diseases, regarding the sources of inoculum and the hidden life of pathogens in outside-plant reservoirs and vectors. Furthermore, sampling methodology and sample processing need to be improved, given the uneven distribution of most bacteria and viruses in plots, orchards, and nurseries or inside plants.

Information resulting from detection by improved molecular methods could be used to optimize disease control through more rational decisions about the choice and use of control measures. Besides optimization of PCR and real-time PCR protocols, the advances in microarray, microchip or biochip technology will allow to test simultaneously, the prospect of a wide variety of pathogenic microorganisms, and the potential of this tool will open new fields of studies in plant pathology. Since cultivated plants can be affected by diseases caused by many types of organisms (nematodes, fungi, bacteria, phytoplasmas, viruses and viroids), a method able to detect several pathogens simultaneously would be ideal for testing plant material, especially for quarantine pathogens. Protocols based on PCR have already been developed for the most important pathogens and they should be optimised soon, looking for multiplex detection, trying to simplify the RNA or DNA extraction without decreasing the robustness of the methods. Analyses for comparison, validation, and standardization are strictly necessary for molecular methods to be accepted and widely used in routine diagnosis (Martin et al., 2000; Alvarez, 2004).

Furthermore, we are at the age of genomics, in which entire DNA or RNA sequences of organisms and their genetic mapping are being determined, providing the data needed to generate microarrays for the detection and identification of plant pathogens (Lévesque, 2001). Thus, we are immersed in this fascinating era, with a fast-developing present and a hopeful future full of new possibilities. However, whether current or new molecular methods will be used for accurate detection of plant pathogens in the future as yet remains unanswered.

Plant sample preparation: the tricky step

Accuracy of molecular analysis for pathogen detection in plant material or environmental samples requires efficient and reproducible methods to access nucleic acids. The preparation of samples is critical and target DNA or RNA should be made as available as possible for applying the different molecular techniques. This aspect is crucial when detection methods are devised, and less important for bacterial identification, because the latter employ cultured isolates and a large amount of DNA is always available. There are a great many published methods for preparing the plant tissues, soil, water or other type of samples before molecular detection of plant pathogenic bacteria or viruses; however, they all pursue access the nucleic acid, avoiding the presence of inhibitory compounds that compromise the detection systems (Henson and French, 1993; Louws et al., 1999). Target sequences are usually purified or treated to remove DNA polymerase inhibitors, such as polysaccharides, phenolic compounds or humic substances from plants or other substrates ((Minsavage et al., 1994; Hartung et al., 1996; Wilson, 1997; Munford et al., 2006). Depending on the material to be analysed the extraction methods can be quite simple or more complex. The use of commercial kits, either general or specifically designed for one type of plant material, has gained acceptance for extraction, given the ease of use and avoidance of toxic reagents during the purification process. Among those: DNeasy and RNeasy Plant System, Qiagen; Ultra Clean Plant RNA and DNA isolation kits, MoBio; Easy-DNA-Extraction kit, Invitrogen; Nucleon plant tissue, Amersham; EaZy Nucleic Acid Isolation Plant DNA kit, Omega Bio-tek; Wizard Genomic DNA and SV Total RNA Isolation System, Promega; Extract-N-Amp Plant PCR kit, Sigma; Powersoil DNA kit, MoBio; RNA/DNA/Protein Purification Kit, Norgen; Quickpick Plant DNA, Bio-Nobile; and others, are applied in different models with success. The extraction methods from plant material have evolved from long laboratory protocols developed when PCR was first used in plant pathology (John, 1992; Pich and Schubert, 1993) to commercial kits, coupled in some cases with immunomagnetic separation (Bextine et al., 2004; Walcott et al., 2006). Nevertheless, simple

laboratory protocols have also been developed with few steps and minimal handling, reducing the risk of cross-contamination, cost and time, with similar results to those of longer and more expensive protocols (Llop et al., 1999; López et al., 2006). In addition, several commercial automated systems allow the extraction and analysis of nucleic acids from plant and microorganisms and even equipment performing automatic separation has also been developed (QIAcube, QIAgen, CA, USA; DNA extractor, Applied Biosystems, USA; X-Tractor Gene, Corbett, USA).

Another step in the development of sample-preparation systems is leading to the integration of treatment and purification in the so-called LOC devices (Lab-On-A-Chip). Several methods have been investigated, such as sonication (Taylor et al., 2001), heating (Abolmaaty et al., 1998) or electrical devices (Gascoyne and Vykoukal, 2004), with promising results. Nevertheless, they are not always effective with all types of plant material and need to be evaluated for each combination of pathogen and plant or substrate before being adopted in routine detection (López et al., 2003). The latest systems developed employ miniaturized devices, to achieve the DNA extraction in a microchip with different approaches such as laser irradiation (Liu et al., 2007) or capillary electrophoresis (Lin et al., 2007). They have the advantage of enabling subsequent detection by real-time PCR (Lee et al., 2006), facilitating the procedure, with the option of being automated. The choice of one or another system for nucleic acid purification relies in practice on the pathogen to be detected and the nature of the sample, the experience of the personnel, the number of analyses to be performed per day, and the type of technique. As there are no universally validated nucleic-acid extraction protocols for all kinds of material and plant pathogens, those available should be compared before selecting one method for routine.

Currently, no standardised protocols are recommended for detection of plant pathogenic bacteria in soil samples, because they can be very complex and DNA yields could be variable, affecting the diagnostic efficiency. Direct extraction methods of total microbial DNA from soils and sediments have been reviewed

(Johnston et al., 1999; van Elsas and Smalla, 1999) and these protocols can be applied for detection of soil borne plant pathogenic bacteria like *Agrobacterium tumefaciens* or *R. solanacearum*. They can include lysozyme or another chemical treatment, bead beating lysis (or freeze-thaw lysis), DNA extraction and precipitation. In other protocols, the target DNA can be "fished out" from the lysate by mixed phase hybridisation with a biotin labelled probe linked to streptavidin coated magnetic beads (Jacobsen, 1999). Furthermore, soil samples can also be previously enriched in the target organism by incubation in solid (Pulawska and Sobiczewski, 2005) or liquid semi selective-medium, facilitating the amplification.

Methods to extract DNA from freshwater and sediments generally share the common feature of cell concentration on micropore membrane, removing biological particles from water by prefiltering and sometimes vacuum filtering using 0.22 - 0.45 µm filters, centrifugation or use of immunomagnetic beads, and lysis of the cells on the filters (Bej, 1999; Pickup et al., 1999); however, this is not always necessary for detection of some plant bacteria. For example, direct amplification with or without previous DNA extraction has been successful in many cases for *R. solanacearum* detection in freshwater by Co-PCR (Caruso et al., 2003 and 2005). DNA extraction from other sources as insects that act as vectors of important bacterial pathogens (*Xylella fastidiosa*, sharpshooters; *Erwinia amylovora* and *E. stewartii*, bees; *Candidatus Liberibacter* spp., psyllids), can require specific protocols (Bextine et al., 2005; Meyer et al., 2007).

Analyses for virus detection by PCR also requires very often mechanical extract preparation from plant or insect tissues, or from other origins and this step must be performed in individual plastic bags to avoid contamination among samples. Special apparatus have been designed for example to facilitate the homogenisation of succulent material into plastic bags (Bioreba) with a light net (Homex, Bioreba; Stomacher, AES Laboratoire), or woody material into plastic bags with heavy net (PlantPrint Diagnostics). Grinding operation is time consuming and entails risks of contamination and release of inhibitors of the molecular

reactions. Then, several attempts have been undertaken to overcome these problems, such as the use of a previous immunocapture phase (Wetzel et al., 1992), the preparation of crude extracts and subsequent dilution in the same extraction buffer or in special one (Kim et al., 2006), the immobilisation of viral targets on membranes by spotting few amounts of plant crude extracts (Olmos et al., 1996; Osman and Rowhani, 2006), and the purification of total RNA through commercially available kits. An interesting method to prepare samples without extract preparation is the direct printing or squashing of the sample on membranes (Bertolini et al., 2008). The use of previously immobilized targets on filter paper, nitrocellulose, nylon or other materials is advised because they can be stored for long time before being used or even mailed, thus allowing their direct preparation in the field if necessary (Olmos et al., 1996). These systems are simpler and much faster than extractions, and allow the manipulation of quarantine viruses without risks (Cambra et al., 1997; Bertolini et al., 2008). The drawback of techniques that use immobilised plant targets lies in the small amount of sample that can be loaded on the support. This disadvantage could be solved by coupling these easy sample-preparation methods to a high-sensitivity detection technique, such as real-time RT-PCR.

In general, when a new PCR protocol or any other molecular method is developed for pathogen detection or disease diagnosis, pilot experiments are advisable to ensure that inhibitory compounds are excluded from the sample (Louws et al., 1999).

Primers and probes: how to design specific ones

The molecular methods for detection of plant pathogens are based on the use of specific sequences (oligonucleotides/probes), and their accuracy is basic for designing a good protocol. As PCR is the most frequently used molecular technique to detect bacteria and viruses, here we will only discuss the design of primers and probes for its use in the different formats of this technique. Partial or complete nucleotide sequences of each DNA or RNA target can be found in the Nucleotide Sequence Search program located in the Entrez Browser program provided by the National Center

for Biotechnology Information (NCBI) (<http://www.ncbi.nlm.nih.gov/Genbank/>) (Bethesda, MD, USA). Conserved regions for each target can be studied using the similarity search Advanced BLAST 2.2.18, with the blastn program designed for analysis of nucleotides (<http://blast.ncbi.nlm.nih.gov/Blast.cgi>) (Altschul et al., 1997). Specific nucleotide regions should be selected and, by using this methodology, appropriate PCR primers to different DNA or RNA targets can be easily and properly designed for bacteria and viruses.

Bacteria

Different strategies have been developed to design PCR primers for specific detection. The DNA sequences from which the primers are designed for bacteria come from three main origins: pathogenicity/virulence genes, ribosomal genes, and plasmid genes. The sequences of published primers for phytobacteria have been compiled by various authors (Louws et al., 1999; Schaad et al., 2001; Alvarez, 2004) but these lists do not include those most recently published. A recent compilation (Palacio et al., submitted) reports more than two hundred PCR protocols for detection and identification of more than 50 bacterial species, 9 subspecies and more than 40 pathovars. The pathogenicity genes used as targets can be involved in any of the several steps leading to symptoms development and can be related to virulence factors (Sato et al., 1997; Coletta-Filho et al., 2006), virulence or avirulence genes (Haas et al., 1995; Kousik and Ritchie, 1998), toxin products (Lydon and Patterson, 2001), other factors (Tan-Bian et al., 2003; Schonfeld et al., 2003), etc. These genes can be situated in plasmids, as primers from Ti plasmid of *A. tumefaciens* (Ponsonnet and Nesme, 1994; Haas et al., 1995; Sawada et al., 1995) or from plasmids of *C. michiganensis* subsp. *sepedonicus* (Schneider et al., 1993), *Xanthomonas axonopodis* pv. *citri* (Hartung et al., 1993), or *Erwinia amylovora* (Bereswill et al., 1992; McManus and Jones, 1995; Llop et al., 2000; De Bellis et al., 2007). They can also be located in the chromosome and be specific to a pathogen, or to a group of pathogens, such as the *peI* gene of soft-rot diseases caused by pectolytic subspecies of *Pectobacterium* (Darrasse et al., 1994; Louws et al., 1999), or belonging to a cluster of genes

involved in the virulence system of different bacterial families (*hrp*, *pth*, and *vir* genes). The utility of PCR protocols that employ specific primers from known pathogenicity genes has been demonstrated for a wide range of bacterial species, although there are also examples of the need to design new primers for some strains that lack some previously considered universal pathogenicity genes (Rivas et al., 2005).

The ribosomal operon has also been employed as a source of primers in many models. The advantage of this target is the universality of the ribosomes in all bacteria, and a size (1,600-2,300 bp), which enables the whole operon to be sequenced quickly and suitable primers to be selected. Databases of ribosomal sequences are available and specific primers can thus be designed for detection purposes (<http://rdp.cme.msu.edu/index.jsp>). Genus-specific rDNA sequences of phyto-bacteria are now available, and many primers based on those sequences have been developed to detect many plant pathogens (Li and De Boer, 1995; Louws et al., 1999; Walcott and Gitaitis, 2000; Botha et al., 2001; Wang et al., 2006). The drawback of choosing this region is the relatively low complexity of the sequences, mainly in bacteria belonging to the same genus or species. This can be solved using sequences from the Internal Transcribed Spacer (ITS), which is more variable in its nucleotide composition. Then, this strategy employs primers from conserved regions of the 16S and 23S ribosomal genes to amplify the ITS region, which can include several tRNA genes and noncoding regions. In this case, the identification of bacteria may be based on the differences in the number and length of the amplified PCR products (Jensen et al., 1993). Despite this universality, several primer sets have been developed for the specific detection of some plant pathogenic bacteria from the DNA sequence comparison of the ITS region, as those for *C. michiganensis* subsp. *sepedonicus* (Li and De Boer, 1995), *E. amylovora* (Maes et al., 1996) or *R. solanacearum* (Fegan et al., 1998), but some of them have shown specificity problems later (Roselló et al., 2007). The increasing use of array technology has led to more widespread use of primers and probes from these regions, because of the high number that can be spotted onto the chip (Franke-

Whittle et al., 2005), providing higher accuracy and reliability, but yet without validation in routine testing.

Plasmid DNA is also widely employed in the design of primers for important bacterial diseases. The plasmid genes amplified may be associated to pathogenicity, as indicated above, or be of unknown function. One problem to be addressed is the stability of the target plasmids, except in cases where the plasmid chosen provide special fitness or pathogenicity traits, as in this event they can be probably more stable (Louws et al., 1999). In some cases, primers targeting plasmid genes have not been found useful for the universal detection of a pathogen, due to the lack of the plasmid in some strains. As an example, primers have been used from pEA29 plasmid sequences for sensitive and specific detection of *E. amylovora* (Bereswill et al., 1992; McManus and Jones, 1995), because this plasmid was considered universal; nevertheless, recently some strains have been found without it (Llop et al., 2006) indicating the risk of false negatives. In other cases the reliability of the sequences seems to be consistent up to now (Hartung et al., 1993 and 1996; Verdier et al., 1998; Cubero et al., 2001 and 2005).

Other sources of primers can be anonymous DNA, obtained through molecular analysis by different techniques, such as RAPD analyses to design primers for *Pseudomonas corrugata* (Catara et al., 2000), *Xylella fastidiosa* (Ferreira et al., 2000), *X. campestris* pv. *phaseoli* (Toth et al., 1998), and *X. fragariae* (Manulis et al., 1994; Pooler et al., 1996). Besides, REP-PCR has been employed to obtain primers for *X. fragariae* (Pooler et al., 1996), and *X. hortorum* pv. *pelargonii* (Sulzinski et al., 1996). Genomic subtraction, a powerful non-sequencing approach to find genetic differences between bacterial strains (Agron et al., 2002) can also be useful. The ability to identify nearly all major sequence differences between two closely related bacteria has been used to design specific probes to identify several plant pathogens like *R. solanacearum* (Cook and Sequeira, 1991; Seal et al., 1992), *P. carotovorum* subsp. *atrosepticum* (Darrasse et al., 1994), or *C. michiganensis* subsp. *sepedonicus* (Mills et al., 1997). However, these primers could show problems

in long-term routine detection due to the unknown stability of the target sequences (Louws et al., 1999).

So far the list of primers generated to detect bacterial pathogens is increasing exponentially and they can cover several targets of the same pathogen. For example, there were at least 24 different primer pairs designed to detect *R. solanacearum*, or 11 for *C. michiganensis* subsp. *sepedonicus* (Arahal et al., 2004). An important feature to take into account is the reliability of the information available in the sequence databases from which to perform the design of specific primers for detection. Arahal et al. (2004) analysed the specificity of the primers already designed for *R. solanacearum* and *C. michiganensis* subsp. *sepedonicus* and they found that some of these primers showed discrepancies with the sequences to which they were matching because sequences are not free of errors, or due to other causes. On the other hand, variations in the chemistry composition of the primers can increase important characteristics related to their specificity (PNAs, Wolffs et al., 2001; LNAs, Veedu et al., 2007) and sensitivity (5' AT-rich overhangs "flap primers", Afonina et al., 2007), and offer new improvements in the use of the PCR technologies, from conventional to real-time PCR.

An important drawback in using the PCR technology for detection of bacteria and viruses in plant material is the inhibition of amplification due to different compounds, that could be detected by adding internal controls. Several strategies have been developed to design such primers to confirm that a negative result in a PCR analysis is a true result and not a failure of the amplification reaction, and internal controls can be used. One strategy consists in constructing a plasmid vector with the same region to be amplified in the analysis, but with an increase or decrease in the length of the amplicon, to discriminate the two bands to be obtained. The vector with the internal control is added to all the tubes of the analysis, along with the sample to be analysed. The primers will anneal to both targets, giving bands differing in size. The vector has to be amplified in all samples, indicating that the PCR reaction has not been inhibited (Cubero et al, 2002). The negative samples will certainly be negative if the control band is present in these reaction tubes. Another system consists

in designing a duplex analysis with two pair of primers, one targeting the DNA of interest to be detected, and the other a universal plant gene or a gene from the specific host, that should be detected simultaneously than the pathogen (Hyman et al, 2000; Pastrick et al, 2000; Mansoor et al, 2005; Osman et al, 2007; Ma et al, 2008). One of the genes most widely used for internal control is the cytochrome oxidase (COX) (Li et al., 2006) which is universal in plant cells.

Viruses

Primers and probes design is also critical to the success in amplifying RNA targets by conventional reverse transcription (RT)-PCR (see below). The size of the amplified product should be as small as possible to ensure good efficiency of the reaction and high sensitivity (Singh and Singh, 1997). Primers with a broad range of specificity must be designed from highly conserved genome sequences. Primers for amplification of genomic sequences from many members of a virus group have been described for *Potyvirus* (Gibbs and Mackenzie, 1997), luteoviruses (Robertson et al., 1991) and geminiviruses (Mehta et al., 1994). Degenerate primers must be used for universal detection of RNA targets belonging to a group, although this may severely affect the overall sensitivity of PCR and require specific optimization on a case-by-case basis, including the balancing of the concentrations of the two primers.

In nested PCR, four primers are used in two amplification rounds and co-operational PCR is based on the simultaneous annealing of three or four primers to the same target using one amplification round only. Internal and external primers must be compatible as in nested-PCR, but in addition, they must be designed as close as possible to facilitate the formation of the largest amplicon, which is the major product of amplification. In real-time PCR, as well as for isothermal amplifications the selection of small fragments for amplification is recommended. For this purpose, software packages with different primer and probe design are available (PrimerExpress, Applied Biosystems; LightCycler Probe Design, Roche; PrimerExplorer, Eiken Chemical Co.; RNAfold Viena Package, <http://rna.tbi.univie.ac.at/cgi-bin/RNAfold.cgi>).

Although DNA and RNA sequences in public databases are enriching our knowledge of plant associated bacteria and viruses, it is unlikely that all of them will be sequenced soon. Thus, it is not possible to check *in silico* the true specificity of the probes and primers employed against all possible sequences of plant microbiota. Only a careful analysis in practice can provide data about the practical accuracy of each protocol.

Available nucleic-acid based techniques: which one to choose?

The most frequently utilised molecular techniques for detection of bacteria and viruses are discussed below and at the end, their most important features are summarised in Table 1.

Molecular hybridisation

Molecular hybridisation-based assays were first utilised in plant pathology to detect *Potato spindle tuber viroid* (Owens and Diener, 1981) and adapted to virus detection (Hull, 1993). However, certain problems associated with the use of radioactive probes, relatively low sensitivity and complexity of these techniques and the development of amplification-based assays have minimized new improvements and applications.

Today, the most common molecular hybridization format for the detection of viruses is non-isotopic dot-blot hybridization using digoxigenin-labelled probes. This technique has been employed for *Apple mosaic virus* (ApMV), *Prunus necrotic ringspot virus* (PNRSV), *Prune dwarf virus* (PDV), PPV, and *Apple chlorotic leaf spot virus* (ACLSV) (Pallás et al., 1998). Furthermore, multiple RNA riboprobes or polyprobes have been used to detect different viruses (Ivars et al., 2004; Herranz, et al., 2005) and they can be associated with tissue printed or squashed material in addition to the spotted extracts. The sensitivity, specificity, accuracy and other parameters of these hybridization techniques, for routine analyses of large numbers of samples, has not been reported or compared with other serological or molecular-based detection techniques. For these

reasons, they are not yet included in officially validated EU protocols.

Molecular hybridisation can also be applied to the specific detection of amplicons generated after amplification techniques based on PCR, thereby increasing their sensitivity and specificity levels (Bertolini et al., 2001) and reducing time when a flow-through system is used (Olmos et al., 2007a).

Fluorescence in situ hybridisation

Fluorescence *in-situ* hybridisation (FISH) combines microscopical observation of bacteria and the specificity of hybridisation (Wullings et al., 1998; Volkhard et al., 2000) and is dependent on the hybridisation of DNA probes to species-specific regions of bacterial ribosomes. In theory, FISH can detect single cells but in practice, the detection level is near 10^3 cells/ml of plant extract. There is a high affinity and selectivity of DNA-probes because FISH takes place under very stringent hybridisation conditions, where a difference of one nucleotide in a 15-20 oligonucleotide probe is sufficient for discrimination. This technique has been included in official diagnostic protocols in the EU (Directive 2006/63/CE for *R. solanacearum*) and recommended in the EPPO protocol for the same pathogen (EPPO, 2004). In practice, FISH can reach a relatively low sensitivity levels in some cases, even though has been employed in some recent works (Ercolini et al., 2006).

Conventional PCR and RT-PCR

PCR was developed over 30 years ago, and its use in the diagnosis of plant diseases has become very common in laboratory practice. Its advantages (speed, sensitivity, specificity) are far more important than its drawbacks (risk of contamination, sensitivity to inhibitors, complexity, cost), and several modifications to solve these problems have been performed with success. In general, PCR, with all its variants, is currently a basic tool in diagnosis, alone or preferentially in combination with other techniques.

As for any target, PCR efficiency for detection of bacteria and viruses is based on the primer specificity

discussed above. Its efficiency is also related to many parameters such as polymerase type, buffer composition and stability, purity and concentration of dNTPs, cycling parameters as well as the characteristics of the starting template (López et al., 2006). In addition, as above indicated, the quality of the nucleic acid to be amplified is critical. Because PCR can achieve a relatively high sensitivity (1 – 10³ cells/ml of plant extract) and good specificity, it is used for routine bacterial detection, although it has been hampered in some cases by a lack of robustness (van der Wolf et al., 2001). However, PCR protocols have been developed for the most important plant pathogenic bacteria (Henson and French, 1993; Louws et al., 1999; López et al., 2003; Alvarez, 2004; Palacio et al., submitted).

RT-PCR is the “gold standard” molecular method used for the detection of plant viruses due to its high sensitivity and specificity. As the majority of them are RNA viruses, an initial step of reverse transcription that converts single strand RNA to cDNA is necessary for PCR-based molecular amplification. When PCR or RT-PCR is applied routinely for detection purposes, the sensitivity usually afforded tends to be similar to ELISA or hybridisation techniques (Olmos et al., 2005).

Nested PCR

Sensitivity and specificity problems associated with conventional PCR and RT-PCR can be reduced by using nested PCR-based methods, based on two consecutive rounds of amplification (Simmonds et al., 1990; Porter-Jordan et al., 1990). Usually, the products of the first amplification are transferred to another tube before the nested PCR is carried out using one or two internal primers (heminested or nested amplification respectively). The potential of nested-PCR in plant pathology has been already reported (Roberts, 1996; Olmos et al., 1997 and 1999), and there are many published examples of its application to bacteria and viruses detection in plants (Pradhanang et al., 2000; Palacio et al., submitted). Sensitivity is increased by two orders of magnitude reaching about 10² bacterial cells/ml of extract. However, the two rounds of

amplification in different tubes also increase the risk of contamination, especially when the method is used on routine in a large scale. To prevent this problem, some authors proposed single-tube nested-PCR protocols for the bacteria *E. amylovora* (Llop et al., 2000), for *Pseudomonas savastanoi* pv. *savastanoi* (Bertolini et al., 2003), and some viruses (Yournon, 1992). The majority of the nested-PCR protocols developed recently focus on phytoplasmas detection, due to the urgent need to increase the sensitivity of the available protocols (Samuitiene and Navalinskiene, 2006; Khan et al., 2006).

One limitation of the nested PCR approach concerns the need to accurately establish the ratio between external and internal primers and the use of limiting amounts of external primers to avoid interference during the second amplification. A simple device based on the use of a compartmentalised Eppendorf tube, which enables RT reaction and nested PCR to be carried out in a single tube and in one-manipulation, has also been described for detection of *Citrus tristeza virus* (CTV) and PPV (Olmos et al., 1999 and 2003). Coupling nested-PCR variants with squashed or printed samples on paper membranes has allowed the detection of RNA targets from several viruses in plant material and in individual insect vectors (Cambra et al., 2006a; Moreno et al., 2007).

Co-operational PCR

A new PCR concept, based on the simultaneous action of four or three primers, has also been developed (Olmos et al., 2002). This technique named Co-operational amplification (Co-PCR) can be performed easily in a simple reaction increasing the sensitivity level and using ten times less reagent than in conventional PCR. The technique was first developed and used successfully for the detection of plant RNA viruses, such as CTV, PPV, *Cucumber mosaic virus* (CMV), *Cherry leaf roll virus* (CLRV) and Strawberry latent ringspot virus (SLRSV) (Olmos et al., 2002) and then for the bacterium *R. solanacearum* in water (Caruso et al., 2003) and in *Pelargonium* spp. cuttings (Marco-Noales et al., 2008). There are also some protocols for

phytoplasmas as “*Ca Phytoplasma mali*”, “*Ca Phytoplasma prunorum*” and “*Ca Phytoplasma pyri*” (Bertolini et al., 2007). Co-PCR requires only one reaction, minimizing manipulation and reducing risk of contamination. However, the small volume of reagents could increase susceptibility to inhibitors, requiring a previous RNA extraction to reach a good sensitivity in detection (Olmos et al., 2002). Coupled with colorimetric detection, the sensitivity observed in virus detection is at least 1000 times higher than that achieved with RT-PCR and is similar to that of nested RT-PCR, which implies in the case of bacteria a detection level of about 1-10 cells/ml of extract.

Multiplex PCR

The simultaneous detection of two or more DNA or/and RNA targets can be afforded by duplex or multiplex PCR in a single reaction with several specific primers included in the PCR cocktail. Multiplex PCR is very useful in plant pathology because different bacteria or viruses frequently infect a single crop or host. This methodology has demonstrated to be a valuable tool for detection and identification purposes (López et al, 2006). There are several examples of simultaneous detection of viruses (Olmos et al., 2007b) and also bacteria and fungi at the same time (Atallah and Stevenson, 2006). Nevertheless, there are still very few examples in which more than three plant viruses are amplified in a single PCR-based assay, probably due to the technical difficulties of a reaction involving so many compatible primers. Two successful examples are the simultaneous detection of the six major characterised viruses affecting olive trees: CMV, CLRV, SLRSV, *Arabis mosaic virus* (ArMV), *Olive latent virus-1* and *Olive latent virus-2* (Bertolini et al., 2001) and the simultaneous detection of nine grapevine viruses (ArMV, grapevine fanleaf virus, grapevine virus A, grapevine virus B, rupestris stem pitting-associated virus, grapevine fleck virus, grapevine leafroll-associated virus-1, -2 and -3) (Gambino and Grinbaudo, 2006).

The design of a multiplex RT-PCR is based on the use of compatible primers specific to different targets, which must be evaluated theoretically *in silico* and empirically tested *in vitro*. It is worth noting that the use of general and common primers to amplify different

targets, such as those based on 16SrRNA gene sequence, is not appropriate because the targets are competing and the reaction will be displaced to the most abundant target, making detection of the less abundant ones more difficult.

Multiplex nested PCR

Multiplex nested RT-PCR method in a single tube, combines the advantages of the multiplex PCR with the sensitivity and reliability of the nested PCR, saving time and reagent costs because two reactions are sequentially performed using a single reaction cocktail. In addition, it enables simultaneous detection of RNA and DNA targets. The accurate design of compatible primers is necessary to avoid hairpins and primer-dimer formation. Although there are some examples in which multiplex nested PCR has been used for detection of phytoplasmas, fungi and viruses (Clair et al., 2003; Stuckenbrock and Rosendahl, 2005; Dovas and Katis, 2003), only in one case was this technology performed in a single tube for specific detection of CMV, CLRV, SLRSV, ArMV, and the bacterium *P. savastanoi* pv. *savastanoi* in olive plant material using 20 compatible primers (Bertolini et al., 2003). The sensitivity achieved for the bacterium *P. savastanoi* pv. *savastanoi* by multiplex nested RT-PCR (1 cell/ml) was similar to the sensitivity achieved by applying the monospecific nested PCR, which was demonstrated to be 100-fold more sensitive than conventional PCR (Bertolini et al., 2003). The authors coupled the multiplex nested RT-PCR with colorimetric detection increasing sensitivity and facilitating the interpretation of results.

Real-time PCR

Conventional PCR has demonstrated its sensitivity and specificity under optimized and controlled conditions. However, it does not provide information about the amount of the pathogen in the sample, and users must employ agarose gel electrophoresis, hybridisation or colorimetric detection as the endpoint analysis. On the contrary, real-time PCR allows the monitoring of the reaction while it is in course, thus avoiding the need to manipulate amplicons that implies high risk of contamination. At the same time the method requires

fewer reagents and less time, and also allows additional studies to be performed during detection (quantification of original target population, detection of several variants of a pathogen or point mutations in a gene). Among the different variants of PCR, real-time PCR represents a quantum leap and is a tool that has proven indispensable in a wide range of molecular biology protocols. In the detection field, this high throughput technique has improved the systems in use, achieving very accurate speed, specificity and reliability, with many protocols having been developed in the last years. Real-time PCR exemplifies an advance that overcomes the principal drawbacks of conventional PCR (risk of cross-contamination, no quantification of the sample) and increases the possibilities of analyses (multiplex, quantitative PCR), due to the use of modified primers, different labels primers in combination with probes, etc. with a high sensitivity. The basis of conventional PCR and the majority of the primers designed for detection can be adapted to the peculiarities of real time PCR, adding another important reason for such transfer.

When setting up a real-time PCR protocol for detection, it is necessary to adapt it to the specific conditions of the detection system and instrumentation, and to the characteristics of the concentration of reagents and cycling, which differ to those of conventional PCR. Among them, the most important are primer design, reaction components and conditions. In contrast to standard PCR, which allows amplification products of several hundred bases without compromising the sensitivity and specificity of the diagnosis, real-time PCR works better with small amplicons (from 50-200 bp). Another difference is the MgCl₂ concentration, usually higher than in conventional PCR, as well as the primers and dNTPs concentration. Sometimes, it may be necessary to employ an asymmetric primer concentration to obtain the best results, in sharp contrast to standard PCR, which requires equimolar concentration of primers. Because the amplified product is generally quite small, it allows shorter cycling conditions, and thus faster analysis of the samples using 0.2 ml tubes included in plates or capillary tubes.

The advances made in the chemistries of primers and probes mean that new approaches using real-time

protocols have been established, with different characteristics depending on the target and assay requirements (quantification, discrimination between closely related subspecies, SNPs, etc). Thus, the primer design and probe type, must first be evaluated in terms of the features required for the assay in order to choose the best ones to fit our specific requirements. In addition to the most widely employed chemistries (SYBRGreen, TaqMan, Scorpion, Molecular Beacons), other new are recently available (Amplifluor; Locked Nucleid Acid (LNA) Probes, Sigma Proligo; Cycling Probe Technology (CPT), Takara; Light Upon eXtension (Lux) Fluorogenic Primers, Invitrogen Corporation; Plexor Technology, Promega), currently reaching at least twenty different chemicals (Lukhtanov et al., 2007; Gasparic et al., 2008; [<http://www.gene-quantification.info>]). Among the most widely used TaqMan probes (Heid et al., 1996) are oligonucleotides that are longer than the primers (20-30 bases) and contain a fluorescent dye and a quencher. They are extensively applied to pathogen detection and are designed to anneal to an internal region of a PCR product. Fluorescence occurs when the polymerase replicates a template on which a TaqMan probe is bound and the 5' exonuclease activity cleaves the probe (Varma-Basil et al., 2004). They have been proposed for detection of *C. michiganensis* subsp. *sepedonicus* (Schaad et al., 1999; van Beckhoven et al., 2002), *R. solanacearum* (Weller et al., 2000; Ozakman and Schaad, 2003), *E. amylovora* (Salm and Geider, 2004), *Ca. Liberibacter asiaticum* (Liao et al., 2004; Li et al., 2006), *Pantoea stewartii* subsp. *stewartii* (Qi et al., 2003), *X. fastidiosa* (Schaad and Frederick, 2002; Bextine et al., 2005), and *X. fragariae* (Weller et al., 2007) among others (WenJun et al., 2007).

Real-time technology is also being used in multiplex format for the detection and characterization of several bacteria (Weller et al., 2000; Berg et al., 2006; Abriouel et al., 2007) and viruses (Korimbocus et al., 2002; Beuret, 2004; Mumford et al., 2004; Varga and James, 2005; Agindotan et al., 2007; Kogovsek et al., 2008). However, in practice it is difficult to optimise the multiplex reaction, and when the ratio between different targets is very different, the reaction is displaced to the most abundant if the same primers are used. The

detection of D and M types of PPV with an artificial mix of RNA transcripts was only possible in samples when the ratio between both types did not exceed 1:1,000 (Capote et al., 2006).

Currently, real-time PCR is taking the place of conventional PCR in detection, with an increasing number of protocols shifting from conventional to real-time and more and more laboratories are using this technique routinely. Moreover, the prospects that this technology offers is leading to faster and more accurate detection assays. The identification of a quarantine pathogen in imported material or in field samples may cause problems, especially for perishable commodities because the time it takes to send the sample to a specialized laboratory, means a delay in taking suitable measures. This can be solved with portable real-time PCR instruments (R.A.P.I.D. system, Idaho Technology; Smart Cycler, Cepheid), which allow rapid on-site diagnosis. These portable systems were first developed to face the threat of bioterrorism with microbial pathogens for human and crop biosecurity (Schaad and Frederick, 2002), but their use has spread to other diagnostic issues (Hollomon, 2003; Levin, 2004; Mavrodieva et al., 2004) and their efficiency in detecting plant pathogens has been evaluated in different laboratories.

Nucleic Acid Sequence Based Amplification (NASBA)

NASBA is an isothermal amplification method that can be used to detect RNA targets. The reaction requires the use of three enzymes, AMV-RT for reverse transcription and to obtain double stranded cDNA, RNase H to hydrolyze the RNA fragment of the hybrid molecule DNA-RNA and T7 RNA polymerase to produce a large amount of anti-sense, single strand RNA transcripts corresponding to the original RNA target. It can be achieved by using two specific primers, one of them including at 5' end the T7 promoter, NTPs and also dNTPs. The entire NASBA process is performed at 41°C for 60 min and the typical level of amplification is at least a factor of 10^9 . The detection of NASBA products can be assessed by chemi-luminescent or colorimetric detection using an internal specific probe digoxigenin labelled or in a real-time assay using molecular beacons (Amplidet

RNA) (van Beckhoven et al., 2002; van der Wolf, 2004). NASBA-beacon assay yields results in less than 1 h (Robert and Kerst, 2001), and offer the advantages that no contaminating DNA is amplified, is performed at 41°C without the need of a thermal-cycler, and requires only 60 minutes reaction affording high levels of sensitivity, superior in some cases to real-time PCR (Scuderi et al, 2007).

This technology has been applied for detecting plant viruses such as *Apple stem pitting virus* (Klerks et al., 2001), PPV (Olmos et al., 2007a), *Potato virus Y*, ArMV and the bacteria *C. michiganensis* subsp. *sepedonicus* and *R. solanacearum* (Szemes and Schoen, 2003). The sensitivity of this method has proven similar to that obtained by real-time RT-PCR when applied to PPV detection (Olmos et al., 2007a).

Loop-mediated isothermal amplification (LAMP)

Loop-mediated isothermal amplification (LAMP) is another type of isothermal amplification that it is being increasingly used in the diagnostic field offering sensitivity and economic costs (Notomi et al., 2000). The method requires a set of four specifically designed primers that recognize six distinct sequences of the target and a DNA polymerase with strand displacement activity. The amplification products are stem-loop DNA structures with several inverted repeats of the target and cauliflower-like structures with multiple loops, yielding >500 µg/ml. The LAMP reaction was enhanced by the addition of loop primers (Nagamine et al., 2002), reducing time and increasing sensitivity. The amplification takes place at 60-65°C for 60 min. Although it was initially developed for DNA it can be adapted to amplify RNA (RT-LAMP) (Fukuta et al., 2003). The method has only been applied to the detection of some plant viruses such as PPV, with a sensitivity level similar to that obtained by real-time PCR (Varga and James, 2006).

Microarray technology

Since the development of microarray technology for gene expression studies (Schena et al., 1995), new approaches are extending their application to the detection of pathogens. Microarrays are generally

composed of thousands of specific probes spotted onto a solid surface (usually nylon or glass). Each probe is complementary to a specific DNA sequence (genes, ITS, ribosomal DNA) and hybridisation with the labelled complementary sequence provides a signal that can be detected and analysed. Although there is great potential for microarray technology in the diagnosis of plant diseases, the practical development of this application is still in progress. For example, following the methodology utilised for genetic analysis (Brown and Botstein, 1999) large numbers of DNA probes used in two-dimensional arrays have allowed thousands of hybridisation reactions to be analysed at the same time (Hadidi et al., 2004). Until now, the microarray technology focuses its use in multiplex format of similar or very different pathogens, taking advantage of the number of probes that can be employed in one chip (Bonants et al., 2002; Schoen et al., 2002 and 2003; Fessehaie et al., 2003; Franke-Whittle et al., 2005; Bonants et al., 2005; Boonham et al., 2007; van Doorn et al., 2007; Pasquini et al., 2008).

With the availability of genomic sequences of pathogens and the rapid development of microarray technology, as well as a renewed emphasis on detection and characterization of quarantine pathogens, there is a rush in the European Union to set up this technology and apply it to detection. Several international projects have developed diagnostic microarrays for plant pathogens, but the final results are still under evaluation (<http://www.cost853.ch/agendaWaedi02.htm>, COST ACTION 853; <http://diagchip.co.uk/index.cfm>, Diagchip project).

The probes can be prepared in at least three basic formats: a) PCR fragments arrayed on nylon membranes, hybridised against cDNA samples radioactively labelled, called macroarrays (Richmond et al., 1999); b) PCR products spotted onto glass slides and DNA labelled with fluorescent dyes (Richmond et al., 1999; Zimmer et al., 2000; Wei et al., 2001); and c) oligonucleotides of different length (from 18 to 70 bp) arrayed and hybridised with the same type of labelled DNA material (Lockhart et al., 1996; Loy et al., 2002 and 2005; Fessehaie et al., 2003; Peplies et al., 2003). For bacterial detection, the material spotted until now is

almost universally oligonucleotides targeting the 16S-23S rDNA genes (Crocetti et al., 2000; Loy et al., 2002; Fessehaie et al., 2003; Peplies et al., 2003; Loy et al., 2005; Franke-Whittle et al., 2005). The microarrays are analysed either by scanning or by a direct imaging system. Another type of microarray under development is called the nanochip (Sosnowski et al., 1997; Nanogen, Inc., San Diego, CA 92121, USA) based on an electronically addressable electrode array that provides direct electric field control over the transport of charged molecules to selected microlocations and concentration over an immobilized substrate. A particular feature of this system is that biotinylated immobilised molecules can be either oligo capture probes or amplified PCR samples. Hybridisation is detected and analysed by fluorescent oligo probes. By regulating the electric-field strength, hybridisation stringency can be adjusted for homologous interactions. Nano chips have shown high specificity and accuracy to diagnose bacterial and viral pathogens affecting potato, due to their ability to discriminate single nucleotide changes (Ruiz-García et al., 2004).

The potential of microarray technology in the detection and diagnosis of plant diseases is very high, due to the multiplex capabilities of the system. Moreover, it can be coupled with other systems, i.e. to perform nucleic-acid extraction on the chip (Liu et al., 2007), achieve PCR reactions and their detection on the same device (van Doorn et al., 2007) or even mix all the systems in one (Lee et al., 2006), providing the possibility of automation that can be of great importance and utility. This possibility, with the coupling with previous steps of the analyses (extraction, PCR, detection) promises a wider use in future protocols (Bonants et al., 2005; Lee et al., 2006; Boonham et al., 2007; van Doorn et al., 2007; Liu et al., 2007). Furthermore, new developments, like the labelling of total bacterial RNA (François et al., 2003), the direct detection of DNA or RNA without previous PCR amplification (Call et al., 2003), or multiplex detection based on padlock probe technology (pUMA) (Bonants et al., 2005), may make this technique simpler.

Table 1. Comparison of sensitivity, specificity, feasibility, rapidness and cost of different techniques in detection of plant pathogenic bacteria and viruses

Technique	Sensitivity ^a	Specificity ^b	Feasibility ^c	Rapidness	Cost
Molecular hybridisation	+ ^d	++++	++	+	+++
FISH	++	++	+++	+	++
Conventional PCR	+++	++++	+++	+++	+++
Nested PCR in a single tube	++++	++++	+++	++	+++
Cooperational-PCR ^e	++++	++++	+++	+++	+++
Multiplex PCR	+++	++++	+++	+++	+++++
Multiplex nested PCR	++++	++++	++	+++	++++
Real-time PCR ^f	+++++	+++++	++++	+++++	+++
NASBA ^g	+++++	++++	++++	++++	++
LAMP	++++	++++	+++	++++	++
Microarrays	+	+++++	+	++	+

^a Sensitivity: probability of detecting true positives.

^b Specificity: probability of detecting true negatives.

^c Feasibility: practicability in routine analysis, execution and interpretation.

^d The number of + symbols indicates how methods rate regarding each considered criterion, from acceptable (+) to optimum (++++).

^e Coupled with hybridisation and colorimetric detection.

^f Using TaqMan probes.

^g Using Molecular Beacons probes.

Optimization of molecular techniques in routine analysis: relevant issues

Molecular techniques like PCR or RT-PCR, despite their advantages have not been yet widely adopted for routine screening protocols in diagnostic laboratories in many countries (Schaad et al., 2003; Alvarez, 2004) for pathogens detection. One of the reasons is that the low titre of the majority of pathogens in plants outside the vegetative period or in symptomless propagative material with latent infections, and the frequent uneven distribution in the host tissues, make them difficult to detect accurately. This fact is especially relevant in the case of fruit trees, grapevines, and other woody plants that exhibit winter dormancy, or in seeds, insect vectors, water and soil, that usually contain low amounts of the target pathogens. Besides, the size of the sample to be analysed is an important unsolved question and molecular methods prescribe very small-volume samples, hampering accurate detection. Sampling protocols must be improved including concentration of the targets or previous enrichment of the pathogen, to reach realistic orders of scale. According to Alvarez (2004), conclusions drawn from very sensitive methods that require only microliters of sample, often misrepresent the real situation. Furthermore, the way in which samples are collected and handled is also very

important, so care should be taken to avoid contamination among samples, to ensure that it is both appropriate and suitable for molecular testing and specifically, for PCR amplification.

Very often, when conventional PCR or RT-PCR is applied routinely for detection purposes, the sensitivity afforded is often lower than expected due to potential inhibitors of transcriptases and/or polymerases. In this context, the possibility of adding new anti-inhibitors compounds in the amplification cocktail to avoid the need of DNA or RNA purification requires more investigation. As indicated above, the presence of different components as well as specific RT-PCR conditions may inhibit the reverse transcription and amplification. Amplification success can also depend on the growth stage, physiological condition or type of plant tissue assayed (Maes et al., 1996). These problems can be solved by testing different preparation methods of the samples or by inclusion of compounds that reduce inhibition and/or by simple dilution of the samples.

Sensitivity is dependent on the specific characteristics of the detection technique and on sampling protocols and sample preparation whereas, the main factors that determine specificity in PCR-based methods are primer selection and amplification conditions. In any event, more in-depth knowledge of the

genome of pathogenic bacteria and viruses will certainly enable more primers to be developed that target known pathogenicity and virulence genes (Louws et al., 1999).

Due to the nature of conventional, nested, or multiplex PCR, practical questions regarding the high level of sensitivity (up to 1 target per reaction) and the amplification of an enormous number of copies of the target sequence should be taken into account (Louws et al., 1999). False positives can arise from contamination during sample collection or sample processing and/or from the sequential contamination of consecutive PCR runs from a few molecules of PCR-generated fragments, being the first amplification cycle critical. False positives can also result not only from cross-amplification of nontarget DNA, but from exogenous DNA from one positive sample to another, from cell/cultures or aerosols, or from contaminating DNA originating from carry-over of previous experiments (Louws et al., 1999; van der Wolf et al., 2001), as indicated since this technique was first developed (Kwok and Higuchi, 1989). Although, these risks decrease on using real-time PCR, the use of PCR-based assays for routine analysis in plant pathology requires numerous negative controls, in addition to non-contaminant sampling and sample preparation methods.

Another potential problem with PCR amplification in routine use is the amplification of products other than those predicted, like single-stranded DNA (Valentine et al., 1992) or mis-priming or amplification of primer artefacts ("primer dimerization"). This background amplification can not only confuse test results, but it can interfere with amplification of predicted products by consuming reaction reagents (Henson and French, 1993). Procedures like "hot start" (Chou et al., 1992) or "heat-soaked" (Ruano et al., 1992) were designed to eliminate or reduce background because they ensure initiation of reactions at denaturation temperature.

False negatives in standard PCR protocols can be attributed to several causes, like the presence of compounds that inhibit the polymerases, degradation of the DNA target sequence, or reagent problems (Louws et al., 1999). Then, it is convenient to include one or several positive controls as extra samples and internal PCR controls as co-amplification of host DNA or other

strategies. In any routine use of a PCR protocol, external quality assurance schemes should be applied to contribute to increasing the accuracy of the final result, but to our knowledge there are no freely-available approved guidelines for plant pathologists.

A frequent criticism of PCR results is that DNA from dead or VBNC cells may be amplified and provide a positive result of low biological relevance. This is especially relevant when analysing quarantine organisms, where the positive result of the analysis implies strict eradication measures. Enrichment or BIO-PCR (Schaad et al., 1995 and 2003; López et al., 1997) can circumvent this problem, as it involves a previous enrichment step in liquid or solid medium, favouring detection of living cells harvested from the media prior to PCR amplification. However, neither the standard PCR protocols nor BIO-PCR can differentiate among dead and VBNC cells (Roszak and Colwell, 1987). Risk of plant disease caused by VBNC cells is still controversial, but as an example there are *in vitro* studies of the ability of VBNC cells of *E. amylovora* to regain culturability and pathogenicity even after nine months in such a state (Ordax et al., 2006). This justifies the use of molecular techniques for screening plant samples, although the isolation of pathogenic bacteria in pure culture and demonstration of their pathogenicity is currently required.

In plant pathology, no decision has been taken for reliance on any single molecular test in most of the protocols developed by different organizations, despite the great sensitivity, specificity and reliability of PCR. Furthermore, in many laboratories, especially in developing countries, the relatively expensive reagents, equipment, and skilled personnel makes it difficult for molecular techniques to be implemented as routine procedures. Nevertheless, regardless of the practical application of these methods in plant health services, published protocols indicate an increasing development of DNA based reports for diagnostic purposes as well as for etiological and epidemiological studies. The number of laboratories of plant protection services equipped with thermocyclers has increased exponentially in the last five years.

Despite some drawbacks, PCR and mainly real-time PCR may fulfil most criteria considered for effective

detection methods: they are sensitive, specific enough, rapid, and suitable for high throughput screening, and will be the most widely used by plant pathologists in the near future, especially when direct methods of sample preparation (without the need of nucleic acid purification) will be validated. Besides, isothermal amplifications could also be the method of choice for some specific utilisations.

Regardless of the slow development of microarray technology for plant pathogen detection, especially due to its low current sensitivity, it shows potential features that make it a very promising tool. Also, coupling it with other molecular systems, like the multiplex-PCR (Call et al., 2001; Panicker et al., 2004) increases the system's detection and diagnostic potential. Nevertheless, this technique is still far from being used for routine detection of plant pathogens given the need for a previous amplification reaction, the low level of sensitivity achieved, and the high cost of the reagents and equipment. It is likely that microarrays will follow a path similar to that of PCR, which spent several years as a research tool before being routinely utilised in plant pathogens diagnosis (López et al., 2003).

Selection of diagnostic methods and validation of protocols: what have we learned?

Molecular techniques for plant pathogen detection are developing rapidly and constantly. However, there are still significant drawbacks to include these tests, due to the lack of appropriate studies and validated methods establishing their reliability and reproducibility for routine analysis. In fact, in plant pathology there is insufficient knowledge and information to demonstrate that adequate risk assessment is afforded by many amplification or PCR-based methods, which detracts from confidence in their results.

Sensitivity, specificity and beyond

Detection and diagnostic tests may be interpreted as a function of several parameters that increase the information about the sanitary status of a plant, strengthen or lessen the probability of infection. Because there is no perfect method, false positive and/or false negative results can be obtained. Consequently, it is

necessary to estimate the operational capacity of each technique or method to minimize uncertainty and improve the interpretation of results. In general, the methods of detection and diagnosis are used to classify plants depending on the presence or absence of one specific pathogen or several. The results of the analyses enable a conclusion to be drawn and facilitate effective decision making. Analyses of diagnostic data can be performed with 2x2 contingency tables, enabling indicators of the operational capacity of each technique to be calculated based on test results *versus* sanitary status. Sensitivity and specificity can be calculated according to Altman and Bland (1994a). Sensitivity is defined as the proportion of true positive of infected plants that the technique or method identifies. The methods affording highest sensitivity must be used to discard the presence of a pathogen supplying an accurate diagnosis of healthy plants, because they give an accurate indication of the pathogen-free status. Specificity is defined as the proportion of true negative (of healthy plants) that the method identifies, supplying an accurate estimation of the real positives. Both indicators constitute one approach to evaluating the diagnostic ability of the test. The highest specific methods can be used to confirm the presence of a pathogen offering an accurate diagnosis of true infected plants.

However, sensitivity and specificity do not answer the question that is always of concern to technicians in the diagnostic service or laboratory. This question is: "what is the probability that the plant is infected if the test result is positive, or not infected if the result is negative?" These concepts constitute the predictive values of the method. Predictive values target data according to the results of the analyses. Positive and negative predictive values are usually estimated according to Altman and Bland (1994b). A positive predictive value is the proportion of plants with positive results given by the method, correctly diagnosed or really infected. A negative predictive value is the proportion of plants with negative results according to the method, which are correctly diagnosed and are really healthy. However, predictive values vary with prevalence and are not appropriate to evaluate the capacity of a method.

Sensitivity and specificity do not include false positive and false negative rates to calculate their values and predictive values depend on the prevalence of disease. Do parameters free of these influences exist? Likelihood ratios are not influenced by prevalence and they can be calculated on the basis of sensitivity and specificity, which are stable for each method. The positive likelihood ratio will be applied in the event that the technique diagnoses a sample as positive and the negative likelihood ratio will be applied if the technique diagnoses a sample as negative and all of them give the likelihood of having disease. Likelihood ratios can be calculated according to Deeks and Altman (2004): the positive likelihood ratio is the proportion of true positives that are correctly identified by the technique (sensitivity), divided by the proportion of false positive results the method gives (1-specificity). The negative likelihood ratio is the proportion of false negatives given by the method (1-sensitivity), divided by the proportion of true negatives correctly identified by the technique (specificity). Likelihood ratios are useful in assessing the potential utility of a test and those >10 or <0.1 generate large changes in post-test probability whilst likelihood ratios ranging from 0.5 to 2 have little effect (Sackett et al. 2000). The likelihood that a result correctly indicates the sanitary state of a plant is the post-test probability of infection or disease. Pre-test probability of disease can be compared with the estimated later probability of disease using the information provided by a diagnostic test. The difference between the former probability and the latter probability is an effective way to evaluate the efficiency of a diagnostic method. Post-test probability can be calculated using likelihood ratios of the method and pre-test probability is the estimated prevalence of the disease. Bayes' theorem is used to translate the information given by the likelihood ratios into a probability of disease. Bayes' theorem states that the pre-test odds of disease multiplied by the likelihood ratio yields the post-test odds of disease. In addition, likelihood ratios of several methods can be sequentially combined (Neves et al., 2004). Thus, this evidence-based approach modifies the previous criterion obtained only by sensitivity and specificity.

Inter-laboratory validation of molecular methods and protocols

The inter-laboratory evaluations of new detection or diagnostic methods provide essential information on test repeatability and reproducibility, ease of implementation, use and interpretation, giving an indication of the robustness in routine analyses of large numbers of samples. A standard protocol must subsequently be established and optimized based on results. Repeatability refers to within-laboratory agreement between replicate observations of the same test performed by the same observer under similar conditions. Reproducibility refers to between-laboratory agreement. Repeatability and reproducibility can be estimated through the calculation of Cohen's kappa coefficients (Cohen, 1960), which measure the agreement of a classification between repetitions. The Kappa index is calculated dividing the subtraction of (observed coincidence - expected coincidence) by the subtraction of (1 - expected coincidence). This kappa coefficient represents to what extent the agreement is better than what would be the result of chance alone. To interpret the kappa value, the following guidelines are used: 0.00 to 0.20: no agreement; 0.21 to 0.40: weak agreement; 0.41 to 0.60: moderate agreement; 0.61 to 0.80: strong agreement; and 0.81 to 1.00, almost perfect agreement (Landis and Koch, 1977).

Plotting post-test probability against pre-test probability, the effect of the test result can be described by two curves, one for a positive result and the other for a negative one according to Lamb, (2007). The vertical distance between a point on the line shows the post-test probability and the equity line indicates the size of the difference between pre-test and post-test probabilities as well as the direction of the decision making. After post-test probability is determined, decision analysis can be performed deciding whether the probability is high enough to confirm diagnosis, sufficiently low to exclude diagnosis, or intermediate in which case a further diagnostic method is required. Thus, a graph of the post-test probabilities can illustrate the discriminatory power of applying a single method, two, or several methods (Olmos et al., 2008). Pre-test probability or prevalence modifies the interpretation of a diagnostic result because

post-test probability varies. After post-test probability has been estimated, the next step is to decide if it confirms or rejects diagnosis or an additional diagnostic method is necessary (Aldington et al., 2006).

Olmos et al. (2008), reported how an evidence-based approach modified the previous criteria obtained only by sensitivity and specificity, to use RT-PCR (the most sensitive method) as screening test for PPV diagnosis during the dormant period and DASi-ELISA using monoclonal antibodies (the most specific method) as a confirmation test. For instance, the probability of a negative result in wintertime by DASi-ELISA given a prevalence value ranging from 0.01 to 0.1%, confirmed in practice PPV-free status of a tree in springtime, with similar post-test probability to that afforded by RT-PCR. A positive result by DASi-ELISA in wintertime provided a much higher post-test value than RT-PCR. Thus, the information given by the evidence-based approach indicated that DASi-ELISA should be used as a screening test at very low levels of PPV incidence (0.01-0.1) not requiring confirmation by RT-PCR. In the case of prevalence level ranging from 0.5 to 10% post-test probability of negative results by DASi-ELISA was a little higher than RT-PCR. This information suggests that in general DASi-ELISA using specific monoclonal antibodies could be used as a screening test in wintertime surveys. If a more accurate PPV status of a tree was required, RT-PCR for negative results should be performed. However, a positive result by DASi-ELISA gives a much higher post-test probability of PPV infection, not requiring confirmation by RT-PCR. The last scenario is that one with PPV prevalences ranging from 25 to 90%. The evidence-based approach would suggest that RT-PCR should be used as a screening test due to its lower post-test probability of negative results. When test accuracy is a priority, in the cases where DASi-ELISA and PCR give discordant results, a third complementary test such as NASBA-FH could be very helpful because it improves diagnostic accuracy and consequently improves the assessment of the sanitary status of a plant.

Selection of a diagnosis method

The selection of appropriate diagnostic methods should involve some critical appraisals focusing on the objective pursued: i) eradication, certification of mother plants, sanitation or quarantine programs or ii) large surveys to evaluate incidence, or screening tests for surveillance of the spreading of a disease. In the first cases, the need to use the most sensitive method should be stressed, accepting the risk of false positives. For this reason evaluation of sensitivity and specificity of the techniques to select the most sensitive is the main requirement. It would enable the presence of the pathogen to be discarded most effectively because it affords the most accurate diagnosis of healthy plants with high confidence when the target pathogen is not detected. However, in the case of large-scale surveys or screening tests for surveillance, the selection of one, two or several methods should be based on an evidence-based approach, evaluation of cost per analysis, calculation of post-test probability of disease and consideration of different scenarios with different prevalence.

Currently, real-time PCR provides the highest levels of sensitivity on the diagnostic scene, opening up new detection possibilities and is becoming the new gold standard for the molecular detection of plant pathogens. However, it is worth highlighting the need to perform a careful analysis of each real-time PCR approach to evaluate false positive and false negative rates not afforded by sensitivity and specificity parameters. In the past, only sensitivity and specificity have been used to evaluate methods in plant pathology, obviating evidence based approaches such as those performed in diagnosis of human and animal diseases. For this reason, the application of likelihood ratios to evaluate diagnostic tests is a must in present and future diagnosis, to achieve adequate risk assessment of the methods. Plotting pre-test and post-test probabilities, coupling likelihood ratios of methods will offer a correct direction in decision making. Thus, post-test probability will support the evaluation of results and the risk management associated with the use of the methods. In addition, interlaboratory evaluation applying kappa index will enable detailed and reliable protocols to be developed for routine testing. A transfer of these

concepts to plant pathogens diagnosis in order to achieve better risk management of the techniques is one of the main challenges for the near future. Knowledge of how a molecular method performs in routine analysis will permit its adequate integration into diagnostic schemes, correct interpretation of results and the design of optimal risk management strategies, facilitating decision-making.

Concluding remarks

Advantages of nucleic-acid based technology in the sensitive, specific and rapid diagnostic are provided by conventional PCR, its variants and more recently, real-time PCR. The optimised protocols should be simple and robust enough so that reliable and reproducible results can be obtained. Furthermore, appropriate sampling protocols and systems as well as sample preparation need to be developed and carefully studied and evaluated for each combination of pathogen, plant material, molecular technique and protocol.

Developing detection methods is both an art and a never-ending story, and the concept of accurate detection of plant pathogenic bacteria and viruses, is moving from conventional methods to molecular techniques, included in integrated approaches (Alvarez, 2004; López et al., 2005). PCR and especially real-time PCR are the methods of choice for rapid and accurate diagnosis of plant pathogenic bacteria but conventional serological methods, such as immunofluorescence, are still widely used and ELISA is the most frequently applied method for virus detection. Consequently, trying to answer the question: "Are nucleic-acid tools solving the challenges posed by specific and sensitive detection of plant pathogenic bacteria and viruses?" we could answer yes, when a rapid analysis of a reduced number of samples is performed and the protocols have been suitably optimised and also when the presence of false positives is not crucial because the main goal is the quality of the negatives. However, for quarantine pathogens or in critical cases of export-import, experience advises the use of more than one technique, based on different biological principles, to avoid the risk of false positives and false negatives. Besides, the use of real-time PCR for routine analysis could still be too expensive for most laboratories.

With the recent access to complete genome sequences, and the microarray possibilities, the function of gene products of most plant pathogens will soon be determined and their role in bacterial cells or viruses understood. This will lead to the discovery of new targets, in the field of diagnosis and hopefully innovative methods. Development of RNA microarrays, which enable gene expression measurements of thousand of genes from plant pathogens will provide data for selecting new markers for diagnosis. However, the success of the practical use of this method will depend on the pathogen diversity, the functional significance of the selected genes in the disease progression and their expression at the different steps in the host/pathogen interactions.

The future will bring more novel tools to detect plant bacteria and viruses, probably based on the new sequences available and because novel and improved reagents, linkers and molecular technologies are expected. However, only some of these will be accepted by phytopathologists, bearing in mind not only the quality of test results, but also their sensitivity and specificity, selecting the best cost-effective diagnostic strategies (López et al., 2006). The main objectives are multiplex real-time quantitative analyses or *in situ* immediate detection of microorganisms in their natural environment without culturing or enrichment. The new qualitative and quantitative detection data generated should provide a more complete picture of the life cycle of each plant pathogen. Consequently, more appropriate sampling methodologies and systems will be set up for efficient detection of latent infections and pathogen reservoirs (López et al., 2003). The development of protocols with higher and well-balanced sensitivity, and specificity for detection of plant pathogens, will have a positive effect on the sanitary status of the cultivated plants, reducing the long distance spreading of new or emergent pathogens in a globalised world. This should drastically reduce the need for pesticide treatments, increase the protection of ecosystems and enhance the quality of food and the environment, not only in developed countries. The accuracy of new detection protocols based on molecular methods will lie behind the

availability of plants free of a wide range of pathogens in a near future.

Acknowledgments

The authors are grateful to all the colleagues at IVIA who contributed to the development and comparison of different diagnostic techniques and to grants from Subdirección General de Agricultura Integrada y Sanidad Vegetal as Spanish Reference Laboratories of Bacteriology and Virology of woody species. This work was supported through projects AGL 2000-0394-P4-04, RTA2003-099, AGL 2004-07799-C03-02, RTA 2004-109, RTA2005-00190 and AGL2005-01546 financed by the Spanish Ministerio de Educación y Ciencia, GV05/214 financed by Generalidad Valenciana and the Cost Actions 853, 864 and 873. Dr. E. Bertolini is recipient of a Juan de la Cierva contract from Ministerio de Educación y Ciencia of Spain and Dr. Pablo Llop and Dr. E. Marco-Noales from the Ministerio de Educación y Ciencia of Spain (Programa INIA/CC.AA, co-funded by European Social Fund, ESF).

References

- Abolmaaty, A., El-Shemy, M.G., Khallaf, M.F., and Levin, R.E. (1998). Effect of lysing methods and their variables on the yield of *Escherichia coli* O157:H7 DNA and its PCR amplification. *J. Microbiol. Methods*. **34**, 133-141.
- Abriouel, H., Ben Omar, N., Lucas López, R., Martínez Cañamero, M., Ortega, E., and Gálvez, A. (2007). Differentiation and characterization by molecular techniques of *Bacillus cereus* group isolates from potato and dégué, two traditional cereal-based fermented foods of Burkina Faso and Republic of Congo. *J. Food Prot.* **70**, 1165-1173.
- Afonina, I., Ankoudinova, I., Mills, A., Lokhov, S., Huynh, P., and Mahoney, W. (2007). Primers with 5' flaps improve real-time PCR. *Biotechniques*. **43**, 770-774.
- Agindotan, B.O., Shiel, P.J., and Berger, P.H. (2007). Simultaneous detection of potato virus, PLRV, PVA, PVX and PVY from dormant potato tubers by TaqMan® real-time RT-PCR. *J. Virol. Methods* **142**, 1-9.
- Agrios, G.N. (2001). *Fitopatología*. 2ª ed. (México: Uteha Noriega Editores).
- Agron, P.G., Macht, M., Radnedge, L., Skowronski, E.W., Miller, W., and Andersen, G.L. (2002). Use of subtractive hybridisation for comprehensive surveys of prokaryotic genome differences. *FEMS Microbiol. Lett.* **211**, 175-182.
- Aldington, S., Robinson, G., and Beasley, R. (2006). Improving the use and interpretation of diagnostic tests in pulmonary embolism. *N. Z. Med. J.* **119**, U2057.
- Altman, D.G. and Bland, J.M. (1994a). Diagnostic tests 1: Sensitivity and specificity. *B. M. J.* **308**, 1552.
- Altman, D.G., and Bland J.M. (1994b). Diagnostic tests 2: Predictive values. *B. M. J.* **309**, 102.
- Altschul, S.F., Madden, T.L., Schäfer, A.A., Zhang, J., Zhang, Z., Miller, W., Myers, E.W., and Lipman, D.J. (1997). Gapped BLAST and PSI-BLAST: a new generation of protein database search programs. *Nucleic Acids Res.* **25**, 3389-3402.
- Alvarez, A.M. (2004). Integrated approaches for detection of plant pathogenic bacteria and diagnosis of bacterial diseases. *Annu. Rev. Phytopathol.* **42**, 339-366.
- Anonymous. (2006a). Commission Directive 2006/56/EC of 12 June 2006 amending the annexes to Council Directive 93/85/EEC on the control of potato ring rot. *Official J. Eur. Union*. No L182/1.
- Anonymous (2006b). Commission Directive 2006/63/EC of 14 July 2006 amending annexes II to VII to Council Directive 98/57/EC on the control of *Ralstonia solanacearum* (Smith) Yabuuchi et al. *Off. J. Eur. Communities* L206:36-106.
- Arahal, D.R., Llop, P., Alonso, M., and López, M.M. (2004). *In silico* evaluation of molecular probes for detection and identification of *Ralstonia solanacearum* and *Clavibacter michiganensis* subsp. *sepedonicus*. *Syst. Appl. Microbiol.* **27**, 581-591.
- Atallah, Z.K., and Stevenson, W.R. (2006). A methodology to detect and quantify five pathogens causing potato tuber decay using real-time

- quantitative polymerase chain reaction. *Phytopathology* 96, 1037-1045.
- Bej, A.K. (1999). Detection of microbial nucleic acids by polymerase chain reaction in aquatic samples. In *Molecular Microbial Ecology Manual*, A.D.L. Akkermans, J.D. Van Elsas, F.J. Bruijn, eds. (Dordrecht, The Netherlands: Kluwer Academic Publishers), pp. 1-49 (2.7.1).
- Bereswill, S., Pahl, A., Bellemann, P., Berger, F., Zeller, W., and Geider, K. (1992). Sensitive and species-specific detection of *Erwinia amylovora* by PCR analysis. *Appl. Environ. Microbiol.* 58, 3522-3526.
- Berg, T., Tesoriero, L., and Hailstones, D.L. (2006). A multiplex real-time PCR assay for detection of *Xanthomonas campestris* from brassicas. *Letters Appl. Microbiol.* 42, 624-630.
- Bertolini, E., Olmos, A., López, M.M., and Cambra, M. (2003). Multiplex nested reverse transcription-polymerase chain reaction in a single closed tube for sensitive and simultaneous detection of four RNA viruses and *Pseudomonas savastanoi* pv. *savastanoi* in olive trees. *Phytopathology* 93, 286-292.
- Bertolini, E., Olmos, A., Martínez, M.C., Gorris, M.T., and Cambra, M. (2001). Single-step multiplex RT-PCR for simultaneous and colourimetric detection of six RNA viruses in olive trees. *J. Virol. Methods* 96, 33-41.
- Bertolini, E., Torres, E., Olmos, A., Martín, M.P., Bertaccini, A., and Cambra, M. (2007). Co-operational PCR coupled with dot blot hybridisation for detection and 16SrX grouping of phytoplasmas. *Plant Pathol.* 56, 677-682.
- Bertolini, E., Moreno, A., Capote, N., Olmos, A., De Luis, A., Vidal, E., Pérez-Panadés, J., and Cambra, M. (2008). Quantitative detection of *Citrus tristeza virus* in plant tissues and single aphids by real-time RT-PCR. *Eur. J. Plant Pathol.* 120, 177-188.
- Beuret, C. (2004). Simultaneous detection of enteric viruses by multiplex real-time RT-PCR. *J. Virol. Methods* 115, 1-8.
- Bextine, B., Blua, M., Harshman, D., and Miller, T.A. (2005). A SYBR green-based real-time polymerase chain reaction protocol and novel DNA extraction technique to detect *Xylella fastidiosa* in *Homalodisca coagulata*. *J. Econ. Entomol.* 3, 667-672.
- Bextine, B., Tuan, S.J., Shaikh, H., Blua, M., and Miller, T.A. (2004). Evaluation of methods for extracting *Xylella fastidiosa* DNA from the glassy-winged sharpshooter. *J. Econ. Entomol.* 97, 757-763.
- Biosca, E.G., Marco-Noales, E., Ordax, M., and López, M.M. (2006). Long-term starvation-survival of *Erwinia amylovora* in sterile irrigation water. *Acta Hort.* 704, 107-112.
- Bonants, P.J.M., Schoen, C.D., Szemes, M., Speksnijder, A., Klerks, M.M., van den Boogert, P.H.J.F., Waalwijk, C., van der Wolf, J.M., and Zijlstra, C. (2005). From single to multiplex detection of plant pathogens: pUMA, a new concept of multiplex detection using microarrays. *Phytopathol. Polonica* 35, 29-47.
- Bonants, P., De Weerd, M., Van Beckhoven, J., Hilhorst, R., Chan, A., Boender, P., Zijlstra, C., and Schoen, C. (2002). Multiplex detection of plant pathogens by microarrays: an innovative tool for plant health management. In *Abstracts Agricultural Biomarkers for Array Technology, Management Committee Meeting*, Wadenswil, 20.
- Boonham, N., Tomlinson, J., and Munford, R. (2007). Microarrays for rapid identification of plant viruses. *Annu. Rev. Phyto.* 45, 307-328.
- Botha, W.J., Serfontein, S., Greyling, M.M., and Berger, D.K. (2001). Detection of *Xylophilus ampelinus* in grapevine cuttings using a nested polymerase chain reaction. *Plant Pathol.* 50, 515-526.
- Brown, P.O., and Botstein, D. (1999). Exploring the new world of the genome with DNA microarrays. *Nat. Genet.* 21, 33-37.
- Call, D.R., Borucki, M.K., and Loge, F.J. (2003). Detection of bacterial pathogens in environmental samples using DNA microarrays. *J. Microbiol. Methods* 53, 235-243.
- Call, D.R., Brockman, F.J., and Chandler, D.P. (2001). Detecting and genotyping *Escherichia coli* O157:H7

- using multiplexed PCR and nucleic acid microarrays. *Int. J. Food Microbiol.* **67**, 71-80.
- Cambra, M., Bertolini, E., Olmos, A., and Capote, N. (2006a). Molecular methods for detection and quantitation of virus in aphids. In *Virus Diseases and Crop Biosecurity*, J.I. Cooper, T. Kuehne, and V. Polischuk, eds. NATO series C: Environmental Security (Dordrecht, The Netherlands: Springer), pp. 81-88.
- Cambra, M., Capote, N., Myrta, A., and Llácer, G. (2006b). *Plum pox virus* and the estimated costs associated with sharka disease. *Bulletin OEPP/EPPO Bulletin* **36**, 202-204.
- Cambra, M., Olmos, A., Gorris, M.T., Duran, N., Román, M.P., Camarasa, E., and Dasí, M.A. (1997). Sensitive detection of plant pathogens by using immobilized targets in tissue imprinted membranes. In *Diagnosis and identification of plant pathogens*. H.W. Dehne, G. Adam, M. Diekmann, J. Frahm, A. Mauler-Machnik and P. van Halteren eds. (London, UK: Kluwer Academic Publishers), pp. 95-98.
- Capote, N., Gorris, M.T., Martínez, M.C., Asensio, M., Olmos, A., and Cambra M. (2006). Interference between D and M types of *Plum pox virus* in Japanese Plum assessed by specific monoclonal antibodies and quantitative real-time reverse transcription-polymerase chain reaction. *Phytopathology* **96**, 320-325.
- Caruso, P., Bertolini, E., Cambra, M., and López, M.M. (2003). A new and co-operational polymerase chain reaction (Co-PCR) for rapid detection of *Ralstonia solanacearum* in water. *J. Microbiol. Methods* **55**, 257-272.
- Caruso, P., Palomo, J.L., Bertolini, E., Álvarez, B., López, M.M., and Biosca, E. (2005). Seasonal variation of *Ralstonia solanacearum* biovar 2 populations in a Spanish river: recovery of stressed cells at low temperatures. *Appl. Environ. Microbiol.* **71**, 140-148.
- Catara, V., Arnold, D., Cirvilleri, G., and Vivian, A. (2000). Specific oligonucleotide primers for the rapid identification and detection of the agent of tomato pith necrosis, *Pseudomonas corrugata*, by PCR amplification: evidence for two distinct genomic groups. *Eur. J. Plant Pathol.* **106**, 753-762.
- Chandler, D.P., and Jarrell, A.E. (2005). Taking arrays from the lab to the field: trying to make sense of the unknown. *Biotechniques* **38**, 591-600.
- Chou, Q., Russell, M., Birch, D.E., Raymond, J., and Bloch, W. (1992). Prevention of pre-PCR mis-priming and primer dimerization improves low-copy-number amplifications. *Nucleic Acids Res.* **20**, 1717-1723.
- Clair, D., Larrue, J., Aubert, G., Gillet, J., Cloquemin, G., and Boudon-Padieu, E. (2003). A multiplex nested-PCR assay for sensitive and simultaneous detection and direct identification of phytoplasma in the Elm yellows group and Stolbur group and its use in survey of grapevine yellows in France. *Vitis* **42**, 151-157.
- Clark, M.F., and Adams, A.M. (1977). Characteristics of the microplate method of enzyme-linked immunosorbent assay for the detection of plant viruses. *J. General Virol.* **34**, 475-483.
- Cohen, J. (1960). A coefficient of agreement for nominal scales. *Educational and Psychological Measurement* **20**, 3746.
- Coletta-Filho, H.D., Takita, M.A., de Souza, A.A., Neto, J.R., Destefano, S.A.L., Hartung, J.S., and Machado, M.A. (2006). Primers based on the *rpf* gene region provide improved detection of *Xanthomonas axonopodis* pv. *citri* in naturally and artificially infected citrus plants. *J. Appl. Microbiol.* **100**, 279-285.
- Cook, D., and Sequeira, L. (1991). The use of subtractive hybridisation to obtain a DNA probe specific for *Pseudomonas solanacearum* race 3. *Mol. Gen. Genet.* **227**, 401-410.
- Crocetti, G.R., Hugenholtz, P., Bond, P.L., Schuler, A., Keller, J., Jenkins, D., and Blackall, L.L. (2000). Identification of polyphosphate-accumulating organisms and design of 16S rRNA-directed probes for their detection and quantitation. *Appl. Environ. Microbiol.* **66**, 1175-1182.
- Cubero, J., and Graham, J. H. (2005). Quantitative real time PCR for bacterial enumeration and allelic

- discrimination to differentiate *Xanthomonas* strains on citrus. *Phytopathology* 95, 1333-1340.
- Cubero, J., Graham, J. H., and Gottwald, T.R. (2001). Quantitative PCR method for diagnosis of citrus bacterial canker. *Appl. Environ. Microbiol.* 67, 2849-52.
- Cubero, J., van der Wolf, J., van Beckhoven, J., and López, M.M. (2002). An internal control for the diagnosis of crown gall by PCR. *J. Microbiol. Methods* 51, 387-392.
- Darrasse, A., Kotoujansky, A., and Bertheau, Y. (1994). Isolation by genomic subtraction of DNA probes specific for *Erwinia carotovora* subsp. *atroseptica*. *Appl. Environ. Microbiol.* 60, 298-306.
- De Bellis, P., Schena, L., and Cariddi, C. (2007). Real-time Scorpion-PCR detection and quantification of *Erwinia amylovora* on pear leaves and flowers. *Eur. J. Plant Pathol.* 118, 11-22.
- De Boer, S.H., Elphinstone, J.G., and Saddler G. (2007). Molecular detection strategies for phytopathogenic bacteria. In *Biotechnology and Plant Disease Management*, Punja, Z.K., De Boer, S.H., and Sanfançon, H. eds. (Oxfordshire, UK: CAB International), pp. 165-194.
- Deeks, J.J., and Altman, D.G. (2004). Diagnostic tests 4: likelihood ratios. *B. M. J.* 329, 168-169.
- Dovas, C.I., and Katis, N.I. (2003). A spot multiplex nested RT-PCR for the simultaneous and generic detection of viruses involved in the aetiology of grapevine leafroll and rugose wood of grapevine. *J. Virol. Methods* 109, 217-226.
- EPPO. (2004). Diagnostics protocols for regulated pests. *Ralstonia solanacearum*. *Bulletin OEPP/EPPO Bulletin* 34, 173-178.
- Ercolini, D., Villani, F., Aponte, M., and Mauriello, G. (2006). Fluorescence in situ hybridisation detection of *Lactobacillus plantarum* group on olives to be used in natural fermentations. *Int. J. Food Microbiol.* 112, 291-296.
- Fegan, M., Croft, B.J., Teakle, D.S., Hayward, A.C., and Smith, G.R. (1998). Sensitive and specific detection of *Clavibacter xyli* subsp. *xyli*, causal agent of ratoon stunting disease of sugarcane, with a polymerase chain reaction-based assay. *Plant Pathol.* 47, 495-504.
- Ferreira, H., Goncalves, E.R., Rodrigues-Neto, J., and Rosato, Y.B. (2000). Primers specific for *Xylella fastidiosa* based on RAPD differential fragments. *Summa-Phytopathologica* 26, 15-20.
- Fessehaie, A.S.H., Boer, D., and Levesque, C.A. (2003). An oligonucleotide array for the identification and differentiation of bacteria pathogenic on potato. *Phytopathology* 93, 262-269.
- François, P., Bento, M., Vaudaux, P., and Schrenzel, J. (2003). Comparison of fluorescence and resonance light scattering for highly sensitive microarray detection of bacterial pathogens. *J. Microbiol. Methods* 55, 755-762.
- Franke-Whittle, I.H., Klammer, S.H., and Insam, H. (2005). Design and application of an oligonucleotide microarray for the investigation of compost microbial communities. *J. Microbiol. Methods* 62, 37-56.
- Fukuta, S., Lida, T., Mizukami, Y., Ishida, A., Ueda, J., Kanbe, M., and Ishimoto, Y. (2003). Detection of *Japanese yam mosaic virus* by RT-LAMP. *Arch. Virology* 148, 1713-1720.
- Gambino, G., and Gribaudo, I. (2006). Simultaneous detection of nine grapevine viruses by multiplex reverse transcription polymerase chain reaction with coamplification of a RNA as internal control. *Phytopathology* 96, 1223-1229.
- Gascoyne, P.R.C., and Vykoukal, J.V. (2004). Dielectrophoretic concepts for automated diagnostic instruments. *Proc. IEEE* 92, 22-42.
- Gasparic, M.B., Cankar, K., Zel, J., and Gruden, K. (2008). Comparison of different real-time PCR chemistries and their suitability for detection and quantification of genetically modified organisms. *BMC Biotechnology*, doi:10.1186/1472-6750-8-26.
- Gibbs, A., and Mackenzie, A. (1997). A primer pair for amplifying part of the genome of all potyvirids by RT-PCR. *J. Virol. Methods* 63, 9-16.
- Grey, B.E., and Steck, T.R. (2001). The viable but nonculturable state of *Ralstonia solanacearum* may be involved in long-term survival and plant infection. *Appl. Environ. Microbiol.* 67, 3866-3872.

- Haas, J.H., Moore, L.W., Ream, W., and Manulis, S. (1995). Universal PCR primers for detection of phytopathogenic *Agrobacterium* strains. *Appl. Environ. Microbiol.* **61**, 2879-2884.
- Hadidi, A., Czosnek, H., and Barba, M. (2004). DNA microarrays and their potential applications for the detection of plant viruses, viroids, and phytoplasmas. *J. Plant Pathol.* **86**, 97-104.
- Hartung, J.S., Daniel, J.F., and Pruvost, O.P. (1993). Detection of *Xanthomonas campestris* pv. *citri* by the polymerase chain reaction. *Appl. Environ. Microbiol.* **59**, 1143-1148.
- Hartung, J.S., Pruvost, O.P., Villemot, I., and Alvarez, A. (1996). Rapid and sensitive colorimetric detection of *Xanthomonas axonopodis* pv. *citri* by immunocapture and a nested-polymerase chain reaction assay. *Phytopathology* **86**, 95-101.
- Heid, C.A., Stevens, J., Livak, K.J., and Williams, P.M. (1996). Real time quantitative PCR. *Genome Res.* **6**, 986-994.
- Helias, V., Andrivon, D., and Jouan, B. (2000). Internal colonization pathways of potato plants by *Erwinia carotovora* ssp. *atroseptica*. *Plant Pathol.* **49**, 33-42.
- Henson, J., and French, R. (1993). The polymerase chain reaction and plant disease diagnosis. *Ann. Rev. Phytopathol.* **31**, 81-109.
- Herranz, M.C., Sanchez-Navarro, J.A., Aparicio, F., Pallás, V. (2005). Simultaneous detection of six stone fruit viruses by non-isotopic molecular hybridization using a unique riboprobe or polyprobe. *J. Virol. Methods* **124**, 49-55.
- Hollomon, D. (2003). Applying modern diagnostics to plant disease control. *Annu. Rev. Plant Pathology* **2**, 287-297.
- Hull, R. (1993). Nucleic acid hybridization procedures. In *Diagnosis of Plant Virus Diseases*, R.E.F. Matthews, ed. (Florida, USA: CRC Press), pp. 253-271.
- Hyman, L.J., Birch, P.R., Dellagi, A., Avrova, A.O., and Toth, I.K. (2000). A competitive PCR-based method for the detection and quantification of *Erwinia carotovora* subsp. *atroseptica* on potato tubers. *Lett. Appl. Microbiol.* **30**, 330-335.
- Ivars, P., Alonso, M., Borja, M., and Hernández, C. (2004). Development of a non-radioactive dot-blot hybridization assay for the detection of *Pelargonium flower break virus* and *Pelargonium line pattern virus*. *Eur. J. Plant Pathol.* **110**, 275-283.
- Jacobsen, C.S. (1999). Detection of microbial genes from the rhizosphere by magnetic capture hybridisation and subsequent amplification of target genes by PCR. In *Molecular Microbial Ecology Manual*, A.D.L. Akkermans, J.D. Van Elsas, F.J. Bruijn, eds. (Dordrecht, The Netherlands: Kluwer Academic Publishers), pp. 1-8 (1.4.1).
- Janse, J.D. (2007). *Phytopathology: Principles and Practice* (Wallingford: CABI Publishing).
- Janse, J.D. (2005). Standardization, validation and approval of test methods for quarantine bacteria: examples of harmonization in plant health laboratories in Europe. *Phytopathol. Polonica* **35**, 19-27.
- Janse, J., van den Beld, H.E., Elphinstone, J., Simpkins, S., Tjou-Tam-Sin, N.N.A., and Van Vaerenbergh J. (2004). Introduction to Europe of *Ralstonia solanacearum* biovar 2, race 3 in *Pelargonium zonale* cuttings. *J. Plant Pathol.* **86**, 147-155.
- Janse, J.D., and Wenneker, M. (2002). Possibilities of avoidance and control of bacterial plant diseases when using pathogen-tested (certified) or -treated plant material. *Plant Pathol.* **51**, 523-536.
- Jensen, M.A., Webster, J.A., and Straus, N. (1993). Rapid identification of bacteria on the basis of polymerase chain reaction-amplified ribosomal DNA spacer polymorphisms. *Appl. Environ. Microbiol.* **59**, 945-952.
- John, M.E. (1992). An efficient method for isolation of RNA and DNA from plants containing polyphenolics. *Nucleic Acids Res.* **20**, 2381.
- Johnston, W.H., Stapleton, R., and Sayler, G.S. (1999). Direct extraction of microbial DNA from soils and sediments. In *Molecular Microbial Ecology Manual*, A.D.L. Akkermans, J.D. Van Elsas, F.J. Bruijn, eds. (Dordrecht, The Netherlands: Kluwer Academic Publishers). pp. 1-9 (1.3.2).

- Khan, J.A., Srivastava, P., and Singh, S.K. (2006). Sensitive detection of a phytoplasma associated with little leaf symptoms in *Withania somnifera*. *Eur. J. Plant Pathol.* *115*, 401-408.
- Kim, W.S., Stobbs, L., James, D., Rochon, D., and Svircev, A.M. (2006). Direct real-time PCR: no RNA extraction involved, high-throughput plant diagnostic tool for detection of *Plum pox virus*. *Canadian J. Plant Pathol.* *28*, 355 (Abstract).
- Klerks, M.M., Leone, G., Lindner, J.L., Schoen, C.D., and van den Heuvel, J.F.J.M. (2001). Rapid and sensitive detection of *Apple stem pitting virus* in apple trees through RNA amplification and probing with fluorescent molecular beacons. *Phytopathology* *91*, 1085- 1091.
- Kogovšek, P., Gow, L., Pompe-Novak, M., Gruden, K., Foster, G.D., Boonham, N., and Ravnikar, M. (2008). Single-step RT real-time PCR for sensitive detection and discrimination of Potato virus Y isolates. *J. Virol. Methods* *149*, 1-11.
- Köhler, G., and Milstein, C. (1975). Continuous cultures of fused cells secreting antibodies of predefined specificity. *Nature* *257*, 495-497.
- Korimbocus, J., Coates, D., Barker, I., and Boonham, N. (2002). Improved detection of *Sugarcane yellow leaf virus* using a real-time fluorescent (TaqMan) RT-PCR assay. *J. Virol. Methods* *103*, 109-120.
- Kousik, C.S., and Ritchie, D.F. (1998). Response of bell pepper cultivars to bacterial spot pathogen races that individually overcome major resistance genes. *Plant Disease* *82*, 181-186.
- Kwok, S., and Higuchi, R. (1989). Avoiding false positives with PCR. *Nature* *339*, 237-238.
- Lamb, C. R. (2007). Statistical briefing: estimating the probability of disease. *Vet. Radiol. Ultrasound* *48*, 297-298.
- Landis, R., and Koch, G. (1977). The measurement of observer agreement for categorical data. *Biometrics* *33*, 159-174.
- Lee, J.G., Cheong, K.H., Huh, N., Kim, S., Choi, J.W., and Ko, C. (2006). Microchip-based one step DNA extraction and real-time PCR in one chamber for rapid pathogen identification. *Lab Chip.* *6*, 886-895.
- Lévesque, C.A. (2001). Molecular methods for detection of plant pathogens-What is the future? *Can. J. Plant Pathol.* *24*, 333-336.
- Levin, R.E. (2004). The application of real-time PCR to food and agricultural systems. A review. *Food Biotech.* *18*, 97-133.
- Li, X., and De Boer, S. (1995). Selection of polymerase chain reaction primers from an RNA intergenic spacer region for specific detection of *Clavibacter michiganensis* subsp. *sepedonicus*. *Phytopathology* *85*, 837-842.
- Li, W., Hartung, J.S., and Levy, L. (2006). Quantitative real-time PCR for detection and identification of *Candidatus Liberibacter* species associated with citrus huanglongbing. *J. Microbiol. Methods* *66*, 104-115.
- Liao, X., Zhu, S., Zhao, W., Luo, K., Qi, Y., Chen, H., He, K., and Zhu, X. (2004). Cloning and sequencing of citrus Huanglongbing pathogen 16S rDNA and its detection by real-time fluorescent PCR. *J. Agri. Biotech.* *12*, 80-85.
- Lin, C.H., Wang, J.H., and Fu, L.M., (2007). Improving the separation efficiency of DNA biosamples in capillary electrophoresis microchips using high-voltage pulsed DC electric fields. *Microfluid Nanofluid.* DOI 10.1007/s10404-008-0259-7.
- Liu, Y., Cady, N.C., and Batt, C.A. (2007). A plastic microchip for nucleic acid purification. *Biomed Microdevices* *9*, 769-776.
- Llop, P., Bonaterra, A., Peñalver, J., and López, M.M. (2000). Development of a highly sensitive nested-PCR procedure using a single closed tube for detection of *Erwinia amylovora* in asymptomatic plant material. *Appl. Environ. Microbiol.* *66*, 2071-2078.
- Llop, P., Caruso, P., Cubero, J., Morente, C., and López, M.M. (1999). A simple extraction procedure for efficient routine detection of pathogenic bacteria in plant material by polymerase chain reaction. *J. Microbiol. Methods* *37*, 23-31.
- Llop, P., Donat, V., Rodriguez, M., Cabrefiga, J., Ruz, L., Palomo, J. L., Montesinos, E., and Lopez, M. M. 2006. An indigenous virulent strain of *Erwinia*

- amylovora* lacking the ubiquitous plasmid pEA29. *Phytopathology* 96, 900-907.
- Lockhart, D.J., Dong, H., Byrne, M.C., Follettie, M.T., Gallo, M.V., Chee, M.S., Mittmann, M., Wang, C., Kobayashi, M., Horton, H., and Brown, E.L. (1996). Expression monitoring by hybridisation to high-density oligonucleotide arrays. *Nat. Biotechnol.* 14, 1675-1680.
- López, M.M., Bertolini, E., Caruso, P., Penyalver, R., Marco-Noales, E., Gorrís, M.T., Morente, C., Salcedo, C., Cambra, M., and Llop, P. (2005). Advantages of an integrated approach for diagnosis of quarantine pathogenic bacteria in plant material. *Phytopathol. Polonica* 35, 49-56.
- López, M.M., Bertolini, E., Olmos, A., Caruso, P., Gorrís, M.T., Llop, P., Penyalver, R., and Cambra, M. (2003). Innovative tools for detection of plant pathogenic viruses and bacteria. *Int. Microbiol.* 6, 233-243.
- López, M.M., Bertolini, E., Marco-Noales, E., Llop, P., and Cambra, M. (2006). Update on molecular tools for detection of plant pathogenic bacteria and viruses. In *Molecular diagnostics: current technology and applications*, J.R. Rao, C.C. Fleming, and J.E. Moore, eds. Horizon Bioscience, Wymondham, UK, pp. 1-46.
- López, M.M., and Cambra, M. (1996). Diagnóstico de bacterias fitopatógenas. In *Patología Vegetal*, G. Llácer, M.M. López, A. Traperó, A. Bello, eds. (Madrid, España: SEF-M.V. Phytoma-España), pp. 587-625.
- López, M.M., Gorrís, M.T., Llop, P., Cubero, J., Vicedo, B., and Cambra, M. (1997). Selective enrichment improves the isolation, serological and molecular detection of plant pathogenic bacteria. In *Diagnosis and identification of plant pathogens*, H.W. Dehne, G. Adam, M. Diekmann, J. Frahn, and A. Mauler, eds. (Kluwer Academic Publishers).
- Louws, F.J., Rademaker, J.L.W., and Bruijn, F.J. (1999). The three Ds of PCR-based genomic analysis of phytobacteria: diversity, detection, and disease diagnosis. *Ann. Rev. Phytopathol.* 37, 81-125.
- Loy, A., Lehner, A., Lee, N., Adamczyk, J., Meier, H., Ernst, J., Schleifer, K.H., and Wagner, M. (2002). Oligonucleotide microarray for 16S rRNA gene-based detection of all recognized lineages of sulfate-reducing prokaryotes in the environment. *Appl. Environ. Microbiol.* 68, 5064-5081.
- Loy, A., Schulz, C., Lucker, S., Schopfer-Wendels, A., Stoecker, K., Baranyi, C., Lehner, A., and Wagner, M. (2005). 16S rRNA gene-based oligonucleotide microarray for environmental monitoring of the betaproteobacterial order "Rhodocyclales". *Appl. Environ. Microbiol.* 71, 1373-1386.
- Lukhtanov, E.A., Lokhov, S.G., Gorn, V.V., Podyminogin, M.A., and Mahoney, W. (2007). Novel DNA probes with low background and high hybridization-triggered fluorescence. *Nucleic Acids Res.* 35, 5 e30. doi:10.1093/nar/gkl1136.
- Lydon, J., and Patterson, C.D. (2001). Detection of tabtoxin-producing strains of *Pseudomonas syringae* by PCR. *Lett. Appl. Microbiol.* 32, 166-170.
- Ma, B.G., Niu, J.X., Morley-Bunker, M., Pan, L.Z., Zhang, H.P., and Zhang, L.X. (2008). Detection of three pear viruses by multiplex RT-PCR assays with co-amplification of an internal control. *Australasian Plant Pathology* 37, 117-122.
- Maes, M., Garbeva, P., and Crepel, C. (1996). Identification and sensitive endophytic detection of the fireblight pathogen *Erwinia amylovora* with 23S ribosomal DNA sequences and the polymerase chain reaction. *Plant Pathol.* 45, 1139-1149.
- Mansoor, S., Qazi, J., Amin, I., Khatri, A., Khan, I.A., Raza, S., Zafar, Y., and Briddon, R.W. (2005). A PCR-based method, with internal control, for the detection of Banana bunchy top virus in banana. *Mol. Biotechnol.* 30, 167-170.
- Manulis, S., Valinsky, L., Lichter, A., and Gabriel, D.W. (1994). Sensitive and specific detection of *Xanthomonas campestris* pv. *pelargonii* with DNA primers and probes identified by random amplified polymorphic DNA analysis. *Appl. Environ. Microbiol.* 60, 4094-4099.
- Marco-Noales, E., Bertolini, E., Morente, C., and López, M.M. (2008). Integrated approach for detection of non culturable cells of *Ralstonia*

- solanacearum* in asymptomatic *Pelargonium* spp. cuttings. *Phytopathology*, (in press).
- Martin, R.R., James, D., and Levesque, C.A. (2000). Impacts of molecular diagnostic technologies on plant disease management. *Ann. Rev. Phytopathol.* **38**, 207-239.
- Mavrodieva, V., Levy, L., and Gabriel, D.W. (2004). Improved sampling methods for real-time polymerase chain reaction diagnosis of citrus canker from field samples. *Phytopathology* **94**, 61-68.
- McManus, P. S., and Jones, A.L. (1995). Detection of *Erwinia amylovora* by nested PCR and PCR-dot-blot and reverse blot hybridisations. *Phytopathology* **85**, 618-623.
- Mehta, P., Wyman, J.A., Nakhla, M.K., and Maxwell, D.P. (1994). Polymerase chain reaction detection of viruliferous *Bemisia tabaci* (Homoptera: Aleyrodidae) with two tomato-infecting geminiviruses. *J. Econ. Entomol.* **87**, 1285-1290.
- Meyer, J., Hoy, M., and Singh, R. (2007). Low incidence of *Candidatus Liberibacter Asiaticus* in *Diaphorina citri* (hemiptera: Psyllidae) populations between Nov 2005 and Jan 2006: relevance to management of citrus greening disease in Florida. *Florida Entomologist* **90**, 394-397.
- Mills, D., Russell, B.W., and Hanus, J.W. (1997). Specific detection of *Clavibacter michiganensis* subsp. *sepedonicus* by amplification of three unique DNA sequences isolated by subtraction hybridisation. *Phytopathology* **87**, 853-886.
- Minsavage, G.V., Thompson, C.M., Hopkins, D.L., Leite, R.P., and Stall, R.E. (1994). Development of a polymerase chain reaction protocol for detection of *Xylella fastidiosa* in plant-tissue. *Phytopathology* **84**, 456-461.
- Moreno, A., Bertolini, E., Olmos, A., Cambra, M., and Fereres, A. (2007). Estimation of vector propensity for *Lettuce mosaic virus* based on viral detection in single aphids. *Spanish J. Agricult. Research* **5**, 376-384.
- Munford, R.A., Boonham, N., Tomlinson, J., and Barker, I. (2006). Advances in molecular phytodiagnosics – new solutions for old problems. *Eur. J. Plant Pathol.* **116**, 1-19.
- Munford, R.A., Skelton, A., Metcalfe, E., Walsh, K., and Boonham, N. (2004). The reliable detection of Barley yellow and mild mosaic viruses using real-time PCR (TaqMan). *J. Virol. Methods* **117**, 153-159.
- Nagamine, K., Hase, T., and Notomi, T. (2002). Accelerated reaction by loop-mediated isothermal amplification using loop primers. *Mol. Cell. Probes* **16**, 223-229.
- Neves, D.D., Dias, R.M., da Cunha, A.J., and Preza, P.C. (2004). What is the probability of a patient presenting a pleural effusion due to tuberculosis? *Braz. J. Infect. Dis.* **8**, 311-318.
- Notomi, T., Okayama, H., Masubuchi, H., Yonekawa, T., Watanabe, K., Amino, N., and Hase, T. (2000). Loop-mediated isothermal amplification of DNA. *Nucleic Acids Res.* **28**, E63.
- Oliver, J.D. (2005). The viable but nonculturable state in bacteria. *J. Microbiol.* **43**, 93-100.
- Olmos, A., Bertolini, E., and Cambra, M. (2002). Simultaneous and co-operational amplification (Co-PCR): a new concept for detection of plant viruses. *J. Virol. Methods* **106**, 51-59.
- Olmos, A., Bertolini, E., Gil, M., and Cambra, M. (2005). Real-time assay for quantitative detection of non-persistently transmitted *Plum pox virus* RNA targets in single aphids. *J. Virol. Methods* **128**, 151-155.
- Olmos, A., Bertolini, E., and Cambra, M. (2007a). Isothermal amplification coupled with rapid flow-through hybridisation for sensitive diagnosis of *Plum pox virus*. *J. Virol. Methods* **139**, 111-115.
- Olmos, A., Bertolini, E., Capote, N., and Cambra, M. (2008). An evidence-based approach to *Plum pox virus* detection by DASI-ELISA and RT-PCR in dormant period. *Virology: Research and Treatment* **1**, 1-8.
- Olmos, A., Cambra, M., Dasi, M. A., Candresse, T., Esteban, O., Gorrís, M.T., and Asensio, M. (1997). Simultaneous detection and typing of plum pox potyvirus (PPV) isolates by Heminested-PCR and PCR-ELISA. *J. Virol. Methods* **68**, 127-137.

- Olmos, A., Cambra, M., Esteban, O., Gorris, M.T., and Terrada, E. (1999). New device and method for capture, reverse transcription and nested-PCR in a single closed-tube. *Nucleic Acids Res.* *27*, 1564-1565.
- Olmos, A., Capote, N., Bertolini, E., and Cambra, M. (2007b). Molecular diagnostic methods for plant viruses. In *Biotechnology and plant disease management*, Z.K. Punja, S.H. De Boer, and H. Sanfaçon, eds. (Oxfordshire, UK: CAB International), pp. 227-249.
- Olmos, A., Dasi, M.A., Candresse, T., and Cambra, M. (1996). Print-capture PCR: a simple and highly sensitive method for the detection of plum pox virus (PPV) in plant tissues. *Nucleic Acids Res.* *24*, 2192-2193.
- Olmos, A., Esteban, O., Bertolini, E., and Cambra, M. (2003). Nested RT-PCR in a single closed tube. In *Methods in molecular biology* vol. 226, PCR Protocols. Second Edition, J.M.S. Bartlett, D. Stirling eds. (Totowa, USA: Humana Press), pp. 156-161.
- Ordax, M., Marco-Noales, E., López, M.M., and Biosca, E.G. (2006). Survival strategy of *Erwinia amylovora* against copper: induction of the viable-but-nonculturable state. *Appl. Environ. Microbiol.* *72*, 3482-3488.
- Osman, F., and Rowhani, A. (2006). Application of a spotting sample preparation technique for the detection of pathogens in woody plants by RT-PCR and real-time PCR (TaqMan). *J. Virol. Methods* *133*, 130-136.
- Osman, F., Leutenegger, C., Golino, D., and Rowhani, A. (2007). Real-time RT-PCR (TaqMan) assays for the detection of *Grapevine Leafroll associated viruses* 1-5 and 9. *J. Virol. Methods* *141*, 22-29.
- Owens, R.A., and Diener, T.O. (1981). Sensitive and rapid diagnosis of potato spindle tuber viroid disease by nucleic-acid hybridization. *Science* *213*, 670-672.
- Ozakman, M., and Schaad, N.W. (2003). A real-time BIO-PCR assay for detection of *Ralstonia solanacearum* race 3, biovar 2, in asymptomatic potato tubers. *Can. J. Plant Pathol.* *25*, 232-239.
- Palacio-Bielsa, A., Cambra, M.A., López, M.M. PCR detection and identification of plant-pathogenic bacteria: updated compilation of protocols (1998-2007). *Eur. J. Plant Pathol.* (submitted).
- Pallás, V., Más, P., and Sanchez-Navarro, J.A. (1998). Detection of plant RNA viruses by nonisotopic dot-blot hybridisation. *Methods Mol. Biol.* *81*, 461-468.
- Panicker, G., Call, D.R., Krug, M.J., and Bej, A. K. (2004). Detection of pathogenic *Vibrio* spp. in shellfish by using multiplex PCR and DNA microarrays. *Appl. Environ. Microbiol.* *70*, 7436-7444.
- Pasquini, G., Barba, M., Hadidi, A., Faggioli, F., Negri, R., Sobol, I., Tiberini, A., Caglayan, K., Mazyad, H., Anfoka, G., Ghanim, M., Zeidan, M., and Czosnek, H. (2008). Oligonucleotide microarray-based detection and genotyping of *Plum pox virus*. *J. Virol. Methods* *147*, 118-126.
- Pastrik, K.H. (2000). Detection of *Clavibacter michiganensis* subsp *sepedonicus* in potato tubers by multiplex PCR with coamplification of host DNA. *Eur. J. Plant Pathol.* *106*, 155-165.
- Pastrik, K.H., Elphinstone, J.G., and Pukall, R. (2002). Sequence analysis and detection of *Ralstonia solanacearum* by multiplex PCR amplification of 16S-23S ribosomal intergenic spacer region with internal positive control. *Eur. J. Plant Pathol.* *108*, 831-842.
- Peplies, J., Glockner, F.O., and Amann, R. (2003). Optimization strategies for DNA microarray-based detection of bacteria with 16S rRNA-targeting oligonucleotide probes. *Appl. Environ. Microbiol.* *69*, 1397-1407.
- Pich, U., and Schubert, Y. (1993). Midiprep method for isolation of DNA from plants with a high content of polyphenolics. *Nucleic Acids Res.* *21*, 3328.
- Pickup, R.W., Rhodes, G., and Saunders, J.R. (1999). Extraction of microbial DNA from aquatic sources: freshwater. In *Molecular microbial ecology manual*. A.D.L. Akkermans, J.D. Van Elsas, F.J. Bruijn, eds. (Dordrecht, The Netherlands: Kluwer Academic Publishers), p.p. 1-11 (1.1.1).
- Ponsonnet, C., and Nesme, X. (1994). Identification of *Agrobacterium* strains by PCR-RFLP analysis of pTi

- and chromosomal regions. *Arch. Microbiol.* **161**, 300-309.
- Pooler, M.R., Ritchie, D.F., and Hartung, J.S. (1996). Genetic relationships among strains of *Xanthomonas fragariae* based on random amplified polymorphic DNA PCR, repetitive extragenic palindromic PCR, and enterobacterial repetitive intergenic consensus PCR data and generation of multiplexed PCR primers useful for the identification of this phytopathogen. *Appl. Environ. Microbiol.* **62**, 3121-3127.
- Porter-Jordan, K., Rosenberg, E. I., Keiser, J.F., Gross, J.D., Ross, A. M., Nasim, S., and Garrett, C. T. (1990). Nested polymerase chain reaction assay for the detection of cytomegalovirus overcomes false positives caused by contamination with fragmented DNA. *J. Med. Virol.* **30**, 85-91.
- Pradhanang, P.M., Elphinstone, J.G., and Fox, R.T.V. (2000). Sensitive detection of *Ralstonia solanacearum* in soil: a comparison of different detection techniques. *Plant Pathol.* **49**, 414-422.
- Pulawska, J., and Sobiczewski, P. (2005). Development of semi-nested PCR-based method for sensitive detection of tumorigenic *Agrobacterium* in soil. *J. Appl. Microbiol.* **98**, 710-721.
- Qi, Y., Xiao, Q., and Zhu, S. (2003). 16S rDNA gene clone and detection of *Pantoea stewartii* subsp. *stewartii* by real-time fluorescent PCR. *J. Hunan Agricultural University* **29**, 183-187.
- Richmond, C.S., Glasner, J.D., Mau, R., Jin, H., and Blattner, F.R. (1999). Genome-wide expression profiling in *Escherichia coli* K-12. *Nucleic Acids Res.* **27**, 3821-3835.
- Rivas, L.A., Mansfield, J.W., Tsiamis, G., Jackson, R.W., and Murillo, J. (2005). Changes in race-specific virulence in *Pseudomonas syringae* pv. *phaseolicola* are associated with a chimeric transposable element and rare deletion events in a plasmid-borne pathogenicity island. *Appl. Environ. Microbiol.* **71**, 3778-3785.
- Robert, S.L., and Kerst, A.J. (2001). Nucleic acid sequence-based amplification assays for rapid detection of West Nile and St. Louis encephalitis viruses. *J. Clinical Microbiol.* **39**, 4506-4513.
- Roberts, P.D. (1996). Survival of *Xanthomonas fragariae* on strawberry in summer nurseries in Florida detected by specific primers and nested polymerase chain reaction. *Plant Dis.* **80**, 1283-1288.
- Robertson, N.L., French, R., and Gray, S.M. (1991). Use of group specific primers and the polymerase chain reaction for the detection and identification of luteoviruses. *J. Gen. Virol.* **72**, 1473-1477.
- Roselló, M., Peñalver, J., Llop, P., Gorris, M.T., García, F., Montón, C., Cambra, M., and López, M.M. (2007). Identification of an *Erwinia* sp. different from *Erwinia amylovora*, with is responsible for necrosis on pear blossoms. *Can. J. Plant Pathol.* **28**, 30-41.
- Rozzak, B.D., and Colwell, R.R. (1987). Survival strategies of bacteria in the natural environment. *Microbiol. Rev.* **51**, 365-379.
- Ruano, G., Pagliaro, E.M., Schwartz, T.R., Lamy, K., Messina, D., et al. (1992). Heat-soaked PCR: an efficient method for DNA amplification with applications to forensic analysis. *BioTechniques* **13**, 266-274.
- Ruiz-García, A.B., Olmos, A., Arahal, D.R., Antúnez, O., Llop, P., Pérez-Ortín, J.E., López, M.M., and Cambra, M. (2004). Biochip electrónico para la detección y caracterización simultánea de los principales virus y bacterias patógenos de la patata. XII Congreso de la Sociedad Española de Fitopatología. Lloret de Mar. p. 12.
- Sackett, D.L., Straus, S., Richardson, W.S., Rosenberg, W., and Haynes, R.B. (2000). Evidence based medicine. How to practise and teach EBM (Edinburgh: Churchill Livingstone).
- Salm, H., and Geider, K. (2004). Real-time PCR for detection and quantification of *Erwinia amylovora*, the causal agent of fire blight. *Plant Pathol.* **53**, 602-610.
- Samuitiene, M., and Navalinskiene, M. (2006). Molecular detection and characterization of phytoplasma infecting *Celosia argentea* L. plants in Lithuania. *Agronomy-Research* **4**, 345-348.

- Sato, M., Watanabe, K., Yazawa, M., Takikawa, Y., and Nishiyama, K. (1997). Detection of new ethylene-producing bacteria, *Pseudomonas syringae* pvs. *cannabina* and *sesami*, by PCR amplification of genes for the ethylene-forming enzyme. *Phytopathology* 87, 1192-1196.
- Sawada, H., Ieki, H., and Matsuda I. (1995). PCR detection of Ti and Ri plasmids from phytopathogenic *Agrobacterium* strains. *Appl. Environ. Microbiol.* 61, 828-831.
- Schaad, N.W. (1988). Inoculum threshold of seedborne pathogens-bacteria. *Phytopathology* 78, 872-875.
- Schaad, N.W., Berthier-Schaad, Y., Sechler, A., and Knorr, D. (1999). Detection of *Clavibacter michiganensis* subsp. *sepedonicus* in potato tubers by BIO-PCR and an automated real-time fluorescence detection system. *Plant Dis.* 83, 1095-1100.
- Schaad, N.W., and Frederick, R.D. (2002). Real-time PCR and its application for rapid plant disease diagnostics. *Canadian J. Plant Pathol.* 24, 250-258.
- Schaad, N.W., Frederick, R.D., Shaw, J., Schneider, W.L., Hickson, R., Petrillo, M.D., and Luster, D.G. (2003). Advances in molecular-based diagnostics in meeting crop biosecurity and phytosanitary issues. *Annu. Rev. Phytopathol.* 41, 305-324.
- Schaad, N.W., Jones, J.B., and Chun, W. (2001). Laboratory guide for identification of plant pathogenic bacteria. Third edition. (APS Press. St. Paul, MN, USA).
- Schaad, N.W., Tamaki, S., Hatziloukas, and E. Panopoulos, N. (1995). A combined biological amplification (BIO-PCR) technique to detect *Pseudomonas syringae* pv. *phaseolicola* in bean seed extracts. *Phytopathology* 85, 243-248.
- Schena, M., Shalon, D., Davis, R.W., and Brown, P.O. (1995). Quantitative monitoring of gene expression patterns with a complementary DNA microarray. *Science* 270, 467-470.
- Schneider, B.J., Zhao, J., and Orser, C. (1993). Detection of *Clavibacter michiganensis* subsp. *sepedonicus* by DNA amplification. *FEMS Microbiol. Lett.* 109, 207-212.
- Schoen, C., De Weerd, M., Hillhorst, R., Boender, P., Szemes, M., and Bonants, P. (2003). Multiple detection of plant (quarantine) pathogens by microarrays: innovative tool for plant health management. In Abstracts of the 19th International Symposium on Virus and Virus-like Diseases of Temperate Fruit Crops, Valencia, p. 108.
- Schoen, C., De Weerd, M., Hillhorst, R., Chan, A., Boender, P., Zijlstra, C., and Bonants, P. (2002). Use of novel 3D microarray flow through system for plant pathogen multiplex detection. In Abstracts Agricultural Biomarkers for Array Technology, Management Committee Meeting, Wadenswil, p. 11.
- Schonfeld, J., Heuer, H., van Elsas, J.D., and Smalla, K. (2003). Specific and sensitive detection of *Ralstonia solanacearum* in soil on the basis of PCR amplification of *fliC* fragments. *Appl. Environ. Microbiol.* 69, 7248-7256.
- Scortichini, M. (1995). Le malattie batteriche delle colture agrarie e delle specie forestali. (Bologna, Italia: Edagricole, Edizione Agricole).
- Scuderi, G., Golmohammadi, M., López, M.M., Cirvilleri, G., and Llop, P. (2007). Optimization of methods for evaluation of viability of *Xanthomonas axonopodis* pv. *citri* in fresh fruits. In abstracts of the XIII International Congress on Molecular Plant-Microbe Interactions, Sorrento.
- Seal, S.E., Jackson, L.A., and Daniels, M.J. (1992). Isolation of a *Pseudomonas solanacearum*-specific DNA probe by subtraction hybridisation and construction of species-specific oligonucleotide primers for sensitive detection by the polymerase chain reaction. *Appl. Environ. Microbiol.* 58, 3751-3758.
- Shurtleff, M.C., and Averre, C.W. III (1997). Glossary of plant-pathological terms (St. Paul, USA: American Phytopathology Association).
- Simmonds, P., Balfe, P., Peutherer, J.F., Ludlam, C.A., Bishop, J.O., and Brown A.J. (1990). Human immunodeficiency virus-infected individuals contain provirus in small numbers of peripheral mononuclear cells and at low copy numbers. *J. Virol.* 64, 864-72.

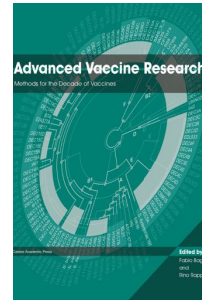
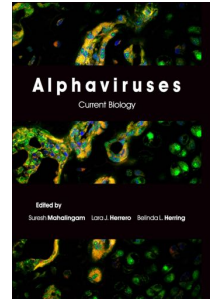
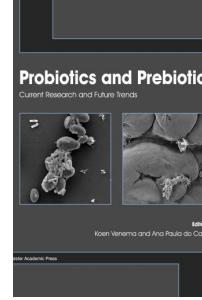
- Singh, M., and Singh R.P. (1997). Potato virus Y detection: sensitivity of RT-PCR depends on the size of fragment amplified. *Can. J. Plant Pathol.* **19**, 149-155.
- Sosnowski, R.G., Tu, E., Butler, W.F., O'Connell, J.P., and Heller, M.J. (1997). Rapid determination of single base mismatch mutations in DNA hybrids by direct electric field control. *Proc. Natl. Acad. Sci. U.S.A.* **94**, 1119-1123.
- Stukenbrock, E.H., and Rosendahl, S. (2005). Development and amplification of multiple co-dominant genetic markers from single spores of arbuscular mycorrhizal fungi by nested multiplex PCR. *Fungal Genetics and Biol.* **42**, 73-80.
- Sulzinski, M.A., Moorman, G.W., Schlaghauser, B., and Romaine, C.P. (1996). Characteristics of a PCR-based assay for in planta detection of *Xanthomonas campestris* pv *pelargonii*. *J. Phytopathol.* **144**, 393-398.
- Szemes, M., and Schoen, C.D. (2003). Design of molecular beacons for AmpliDet RNA assay characterization of binding stability and probe specificity. *Anal. Biochem.* **315**, 189-201.
- Tan-Bian, S., Yabuki, J., Matsumoto, S., Kageyama, K., and Fukui, H. (2003). PCR primers for identification of opine types of *Agrobacterium tumefaciens* in Japan. *J. General Plant Pathol.* **69**, 258-266.
- Taylor, M.T., Belgrader, P.B., Furman, J., Pourahmadi, F., Kovacs, G.T.A., and Northrup, M.A. (2001). Lysing bacterial spores by sonication through a flexible interface in a microfluidics system. *Anal. Chem.* **73**, 492-496.
- Terrada, E., Kerschbaumer, R.J., Giunta, G., Galeffi, P., Himmler, G., and Cambra, M. (2000). Fully "Recombinant Enzyme-Linked Immunosorbent Assays" using genetically engineered single-chain antibody fusion proteins for detection of *Citrus tristeza virus*. *Phytopathology* **90**, 1337-1344.
- Toth, I.K., Hyman, L.J., Taylor, R., and Birch, P.R.J. (1998). PCR-based detection of *Xanthomonas campestris* pv. *phaseoli* var *fuscans* in plant material and its differentiation from *X.c.pv. phaseoli*. *J. Appl. Microbiol.* **85**, 327-336.
- Valentine, J.E., Boyle, M.J., Sewell, W.A., and Gough, N.M. (1992). Presence of single-stranded DNA in PCR products of slow electrophoretic mobility. *BioTechniques* **13**, 222-223.
- van Beckhoven, J.R.C.M., Stead, D.E., and van der Wolf, J.M. (2002). Detection of *Clavibacter michiganensis* subsp. *sepedonicus* by AmpliDet RNA, a new technology based on real time monitoring of NASBA amplicons with a molecular beacon. *J. Appl. Microbiol.* **93**, 840-849.
- van der Wolf, J.M., and Schoen, C.D. (2004). Bacterial pathogens: detection and identification methods. In *Encyclopedia of plant and crop science*, R.M Goodman ed. (New York, USA: Marcel Dekker), pp. 1-5.
- van der Wolf, J.M., van Beckhoven, J.R.C.M., Bonanats, P.J.M., and Schoen, C.D. (2001). New technologies for sensitive and specific routine detection of plant pathogenic bacteria. In *Plant pathogenic bacteria*, S.H. de Boer, ed. (Dordrecht, The Netherlands: Kluwer Academic Publisher), pp. 75-77.
- van Doorn, R., Szemes, M., Bonants, P., Kowalchuk, G.A., Salles, J.F., Ortenberg, E., and Schoen, C.D. (2007). Quantitative multiplex detection of plant pathogens using a novel ligation probe-based system coupled with universal, high-throughput real-time PCR on Open Arrays. *BMC Genomics.* **14**, 276.
- van Elsas, J.D., and Smalla, K. (1999). Extraction of microbial community DNA from soils. In *Molecular Microbial Ecology Manual*. Akkermans, A.D.L. Akkermans, J.D. Van Elsas, F.J. Bruijn, eds. (Dordrecht, The Netherlands: Kluwer Academic Publishers), pp. 1-11 (1.3.3).
- Varga, A., and James, D. (2005). Detection and differentiation of Plum pox virus using real-time multiplex PCR with SYBR Green and melting curve analysis: a rapid method for strain typing. *J. Virol. Methods* **123**, 213 – 220.
- Varga, A., and James, D. (2006). Use of reverse transcription loop-mediated isothermal amplification for the detection of *Plum pox virus*. *J. Virol. Methods* **138**, 184-190.

- Varma-Basil, M., El-Hajj, H., Marras, S.A., Hazbon, M.H., Mann, J.M., Connell, N.D., Kramer, F.R., and Alland, D. (2004). Molecular beacons for multiplex detection of four bacterial bioterrorism agents. *Clin. Chem.* *50*, 1060-1062.
- Veedu, R., Vester, B., and Wengel, J. (2007). Novel applications of locked nucleic acids. *Nucleic Acids Res.* *35*, 29-30.
- Verdier, V., Mosquera, G., and Assigbetse, K. (1998). Detection of the cassava bacterial blight pathogen, *Xanthomonas axonopodis* pv. *manihotis*, by polymerase chain reaction. *Plant Dis.* *82*, 79-83.
- Volkhard, A., Kempf, J., Trebesius, K., and Autenrieth, I.B. (2000). Fluorescent *in situ* hybridization allows rapid identification of microorganisms in blood cultures. *J. Clin. Microbiol.* *38*, 830-838.
- Walcott, R.R., and Gitaitis, R.D. (2000). Detection of *Acidovorax avenae* subsp. *citrulli* in watermelon seed using immunomagnetic separation and the polymerase chain reaction. *Plant Disease* *84*, 470-474.
- Walcott, R.R., Castro, A.C., Fessehaie, A., and Ling, K. (2006). Progress towards a commercial PCR-based seed assay for *Acidovorax avenae* subsp. *citrulli*. *Seed Science and Technology* *34*, 101-116.
- Wang, Z., Yin, Y., Hu, H., Yuan, Q., Peng, G., and Xia, Y. (2006). Development and application of molecular-based diagnosis for '*Candidatus Liberibacter asiaticus*', the causal pathogen of citrus huanglongbing. *Plant Pathol.* *55*, 630-638.
- Wei, Y., Lee, J.M., Smulski, D.R., and LaRossa, R.A. (2001). Global impact of *sdiA* amplification revealed by comprehensive gene expression profiling of *Escherichia coli*. *J. Bacteriol.* *183*, 2265-2272.
- Weller, S.A., Elphinstone, J.G., Smith, N.C., Boonham, N. and Stead, D.E. (2000). Detection of *Ralstonia solanacearum* strains with a quantitative, multiplex, real-time, fluorogenic PCR (TaqMan) assay. *Appl. Environ. Microbiol.* *66*, 2853-2858.
- Weller, S.A., Beresford-Jones, N.J., Hall, J., Thwaites, R., Parkinson, N., and Elphinstone, J.G. (2007). Detection of *Xanthomonas fragariae* and presumptive detection of *Xanthomonas arboricola* pv. *fragariae*, from strawberry leaves, by real-time PCR. *J. Microbiol. Methods.* *70*, 379-383.
- WenJun, Z., ShuiFang, Z., XiaoLan, L., HongYun, C., and TianWei, T. (2007). Detection of *Xanthomonas oryzae* pv. *oryzae* in seeds using a specific TaqMan probe. *Molecular Biotechnology* *35*, 119-127.
- Wetzel, T., Candresse, T., Macquaire, G., Ravelonandro, M., and Dunez, J. (1992). A highly sensitive immunocapture polymerase chain reaction method for plum pox potyvirus detection. *J. Virol. Methods* *39*, 27-37.
- Wilson, I.G. (1997). Inhibition and facilitation of nucleic acid amplification. *Appl. Environ. Microbiol.* *63*, 3741-3751.
- Wolffs, P., Knutsson, R., Sjöback, R., and Rådström, P. (2001). PNA-Based Light-Up Probes for Real-Time Detection of Sequence-Specific PCR Products. *BioTechniques* *31*, 766-771.
- Wullings, B.A., Beuningen, A.R., van Janse, J.D., Akkermans, A.D.L., and Van Beuningen, A.R. (1998). Detection of *Ralstonia solanacearum*, which causes brown rot of potato, by fluorescent *in situ* hybridization with 23S rRNA-targeted probes. *Appl. Environ. Microbiol.* *64*, 4546-4554.
- Yourno, J. (1992). A method for nested PCR with single closed reaction tubes. *PCR Methods Appl.* *2*, 60-65.
- Zimmer, D.P., Soupene, E., Lee, H.L., Wendisch, V.F., Khodursky, A.B., Peterm B.J., Bender, R.A., and Kustu, S. (2000). Nitrogen regulatory protein C-controlled genes of *Escherichia coli*: scavenging as a defense against nitrogen limitation. *Proc. Natl. Acad. Sci. U. S A.* *97*, 14674-14679.

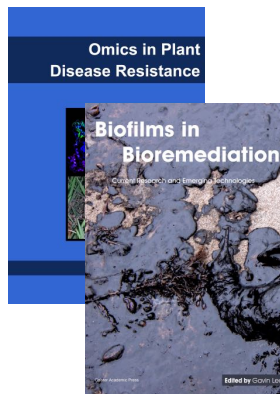
Further Reading

Caister Academic Press is a leading academic publisher of advanced texts in microbiology, molecular biology and medical research. Full details of all our publications at [caister.com](http://www.caister.com)

- **MALDI-TOF Mass Spectrometry in Microbiology**
Edited by: M Kostrzewa, S Schubert (2016)
www.caister.com/malditof
- **Aspergillus and Penicillium in the Post-genomic Era**
Edited by: RP Vries, IB Gelber, MR Andersen (2016)
www.caister.com/aspergillus2
- **The Bacteriocins: Current Knowledge and Future Prospects**
Edited by: RL Dorit, SM Roy, MA Riley (2016)
www.caister.com/bacteriocins
- **Omics in Plant Disease Resistance**
Edited by: V Bhadauria (2016)
www.caister.com/opdr
- **Acidophiles: Life in Extremely Acidic Environments**
Edited by: R Quatrini, DB Johnson (2016)
www.caister.com/acidophiles
- **Climate Change and Microbial Ecology: Current Research and Future Trends**
Edited by: J Marxsen (2016)
www.caister.com/climate
- **Biofilms in Bioremediation: Current Research and Emerging Technologies**
Edited by: G Lear (2016)
www.caister.com/biorem
- **Microalgae: Current Research and Applications**
Edited by: MN Tsaloglou (2016)
www.caister.com/microalgae
- **Gas Plasma Sterilization in Microbiology: Theory, Applications, Pitfalls and New Perspectives**
Edited by: H Shintani, A Sakudo (2016)
www.caister.com/gasplasma
- **Virus Evolution: Current Research and Future Directions**
Edited by: SC Weaver, M Denison, M Roossinck, et al. (2016)
www.caister.com/virusevol
- **Arboviruses: Molecular Biology, Evolution and Control**
Edited by: N Vasilakis, DJ Gubler (2016)
www.caister.com/arbo
- **Shigella: Molecular and Cellular Biology**
Edited by: WD Picking, WL Picking (2016)
www.caister.com/shigella
- **Aquatic Biofilms: Ecology, Water Quality and Wastewater Treatment**
Edited by: AM Romani, H Guasch, MD Balaguer (2016)
www.caister.com/aquaticbiofilms
- **Alphaviruses: Current Biology**
Edited by: S Mahalingam, L Herrero, B Herring (2016)
www.caister.com/alpha
- **Thermophilic Microorganisms**
Edited by: F Li (2015)
www.caister.com/thermophile



- **Flow Cytometry in Microbiology: Technology and Applications**
Edited by: MG Wilkinson (2015)
www.caister.com/flow
- **Probiotics and Prebiotics: Current Research and Future Trends**
Edited by: K Venema, AP Carmo (2015)
www.caister.com/probiotics
- **Epigenetics: Current Research and Emerging Trends**
Edited by: BP Chadwick (2015)
www.caister.com/epigenetics2015
- **Corynebacterium glutamicum: From Systems Biology to Biotechnological Applications**
Edited by: A Burkovski (2015)
www.caister.com/cory2
- **Advanced Vaccine Research Methods for the Decade of Vaccines**
Edited by: F Bagnoli, R Rappuoli (2015)
www.caister.com/vaccines
- **Antifungals: From Genomics to Resistance and the Development of Novel Agents**
Edited by: AT Coste, P Vandeputte (2015)
www.caister.com/antifungals
- **Bacteria-Plant Interactions: Advanced Research and Future Trends**
Edited by: J Murillo, BA Vinatzer, RW Jackson, et al. (2015)
www.caister.com/bacteria-plant
- **Aeromonas**
Edited by: J Graf (2015)
www.caister.com/aeromonas
- **Antibiotics: Current Innovations and Future Trends**
Edited by: S Sánchez, AL Demain (2015)
www.caister.com/antibiotics
- **Leishmania: Current Biology and Control**
Edited by: S Adak, R Datta (2015)
www.caister.com/leish2
- **Acanthamoeba: Biology and Pathogenesis (2nd edition)**
Author: NA Khan (2015)
www.caister.com/acanthamoeba2
- **Microarrays: Current Technology, Innovations and Applications**
Edited by: Z He (2014)
www.caister.com/microarrays2
- **Metagenomics of the Microbial Nitrogen Cycle: Theory, Methods and Applications**
Edited by: D Marco (2014)
www.caister.com/n2



Order from [caister.com/order](http://www.caister.com/order)